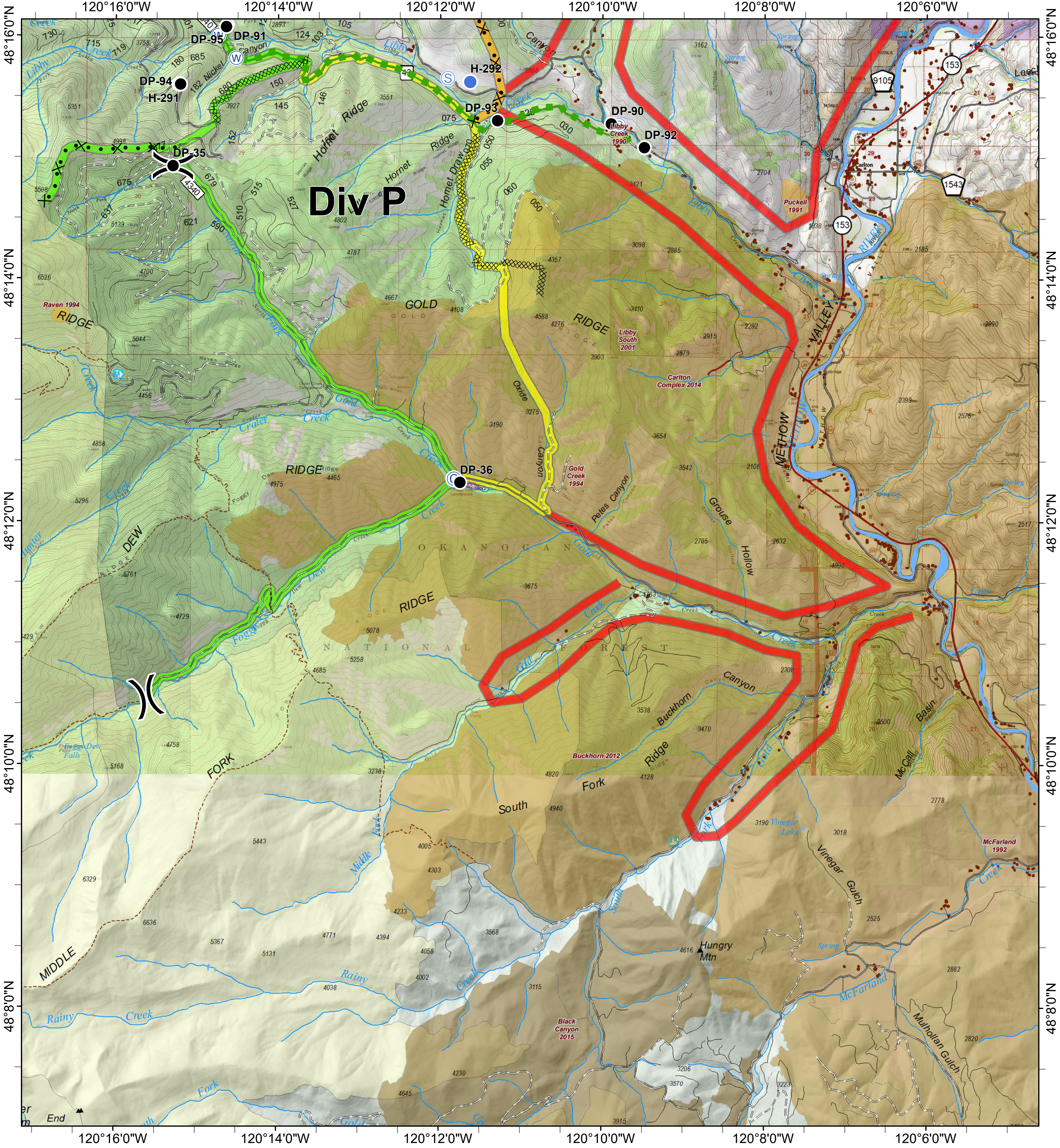
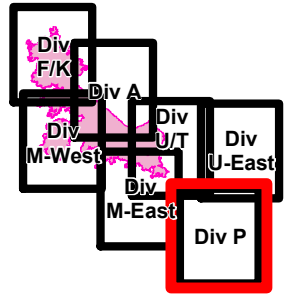




Crescent Mountain Fire

WA-OWF-000422
49,277 Acres
as of 9/1 @ 0037



Div P

<ul style="list-style-type: none"> Ⓒ Camp Ⓔ Drop Point Ⓕ Helispot Ⓖ Staging Area Ⓖ Water Source)) Division Break XXXXX Completed Dozer Line 	<ul style="list-style-type: none"> ⊗ Proposed Dozer Line — Escape Route --- Trail — Highway — County Roads — Other County Roads — City, Private Roads — Paved Road — Gravel Road, Suitable for Passenger Car — Dirt Road, Suitable for Passenger Car --- Road Not Suitable for Passenger Car 	<ul style="list-style-type: none"> — Closed Road --- Existing "Unauthorized" Roads --- Decommissioned Roads ■ Structure — PACE: primary — PACE: alternate — PACE: contingency — PACE: emergency 	<p>FIREYEAR</p> <ul style="list-style-type: none"> ■ 1990-1999 ■ 2000-2009 ■ 2010-2014 ■ 2015-2017 ■ Roadless Conservation 	<ul style="list-style-type: none"> ■ FS ■ PVT ■ WA Dept of F&W ■ Washington DNR
---	---	---	--	---

0 0.25 0.5 1 Miles

