

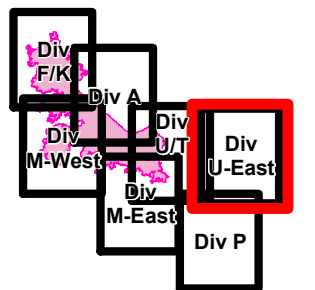


Crescent Mountain Fire

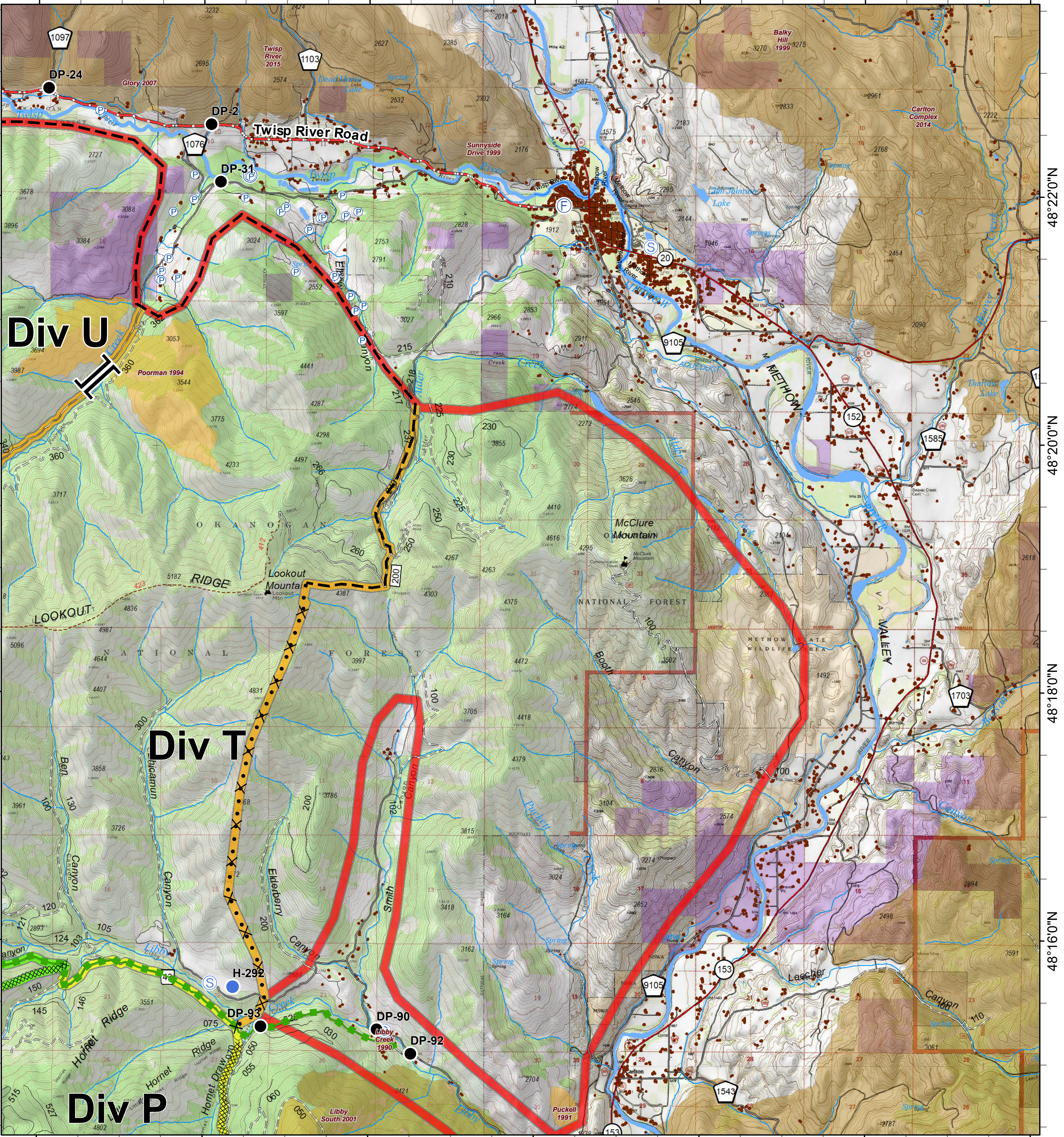
WA-OWF-000422

49,277 Acres

as of 9/1 @ 0037



120°14'0"W 120°12'0"W 120°10'0"W 120°8'0"W 120°6'0"W 120°4'0"W 120°2'0"W



48°22'0"N 48°20'0"N 48°18'0"N 48°16'0"N 48°14'0"N 48°12'0"N 48°10'0"N 48°8'0"N 48°6'0"N 48°4'0"N 48°2'0"N

● Drop Point	Ⓢ Staging Area	⌋ Branch Break	⊗ Proposed Dozer Line	— Twisp River Road	— Closed Road	FIREYEAR	FS
Ⓢ Fire Station	Ⓜ Water Source	— Planned Fire Line	— Escape Route	— Highway	— Existing "Unauthorized" Roads	1990-1999	PVT
● Helispot	⚠ Value at Risk	— Trail	—	— County Roads	— Structure	2000-2009	WA Dept of F&W
Ⓟ Pump	⊗ Completed Dozer Line	—	—	— Other County Roadsd	— PACE: primary	2010-2014	Washington DNR
		—	—	— Private/Other Roads	— PACE: alternate	2015-2017	
		—	—	— Paved Road	— PACE: contingency		
		—	—	— Gravel Road, Suitable for Passenger Car	— PACE: emergency		
		—	—	— Dirt Road, Suitable for Passenger Car			
		—	—	— Road Not Suitable for Passenger Car			

0 0.25 0.5 1 Miles

