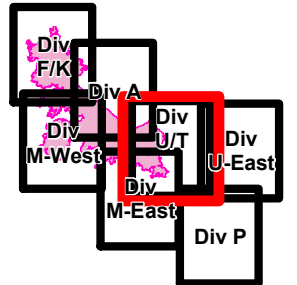




# Crescent Mountain Fire

WA-OWF-000422  
49,277 Acres  
as of 9/1 @ 0037



120°22'0"W

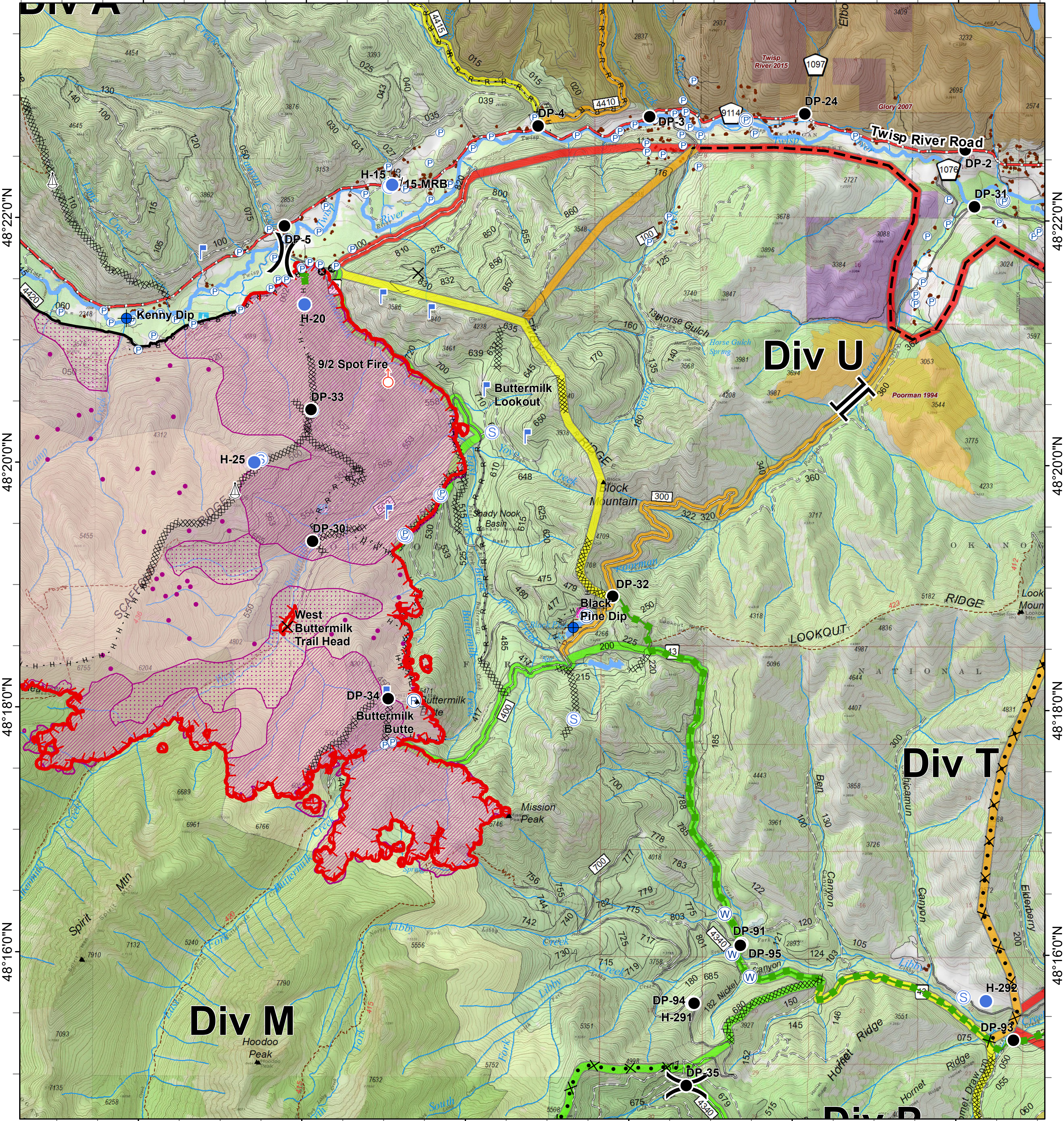
120°20'0"W

120°18'0"W

120°16'0"W

120°14'0"W

120°12'0"W



<ul style="list-style-type: none"> <li> Closure</li> <li> Dip Site</li> <li> Drop Point</li> <li> Helispot</li> <li> Lookout</li> <li> Pump</li> <li> Repeater</li> </ul>	<ul style="list-style-type: none"> <li> Retardant/Mud Pit</li> <li> Sling Site</li> <li> Spot Fire</li> <li> Staging Area</li> <li> Water Source</li> </ul>	<ul style="list-style-type: none"> <li> Division Break</li> <li> Branch Break</li> <li> Completed Dozer Line</li> <li> Completed Hand Line</li> <li> Road as Completed Line</li> <li> Proposed Dozer Line</li> <li> Planned Fire Line</li> <li> Air Tanker Retardant</li> <li> Escape Route</li> <li> Other</li> <li> Uncontrolled Fire Edge</li> <li> Completed Line</li> </ul>	<ul style="list-style-type: none"> <li> Twisp River Road</li> <li> County Roads</li> <li> Other County Roads</li> <li> City, Private Roads</li> <li> Paved Road</li> <li> Gravel Road, Suitable for Passenger Car</li> <li> Dirt Road, Suitable for Passenger Car</li> <li> Road Not Suitable for Passenger Car</li> <li> Trail</li> </ul>	<ul style="list-style-type: none"> <li> Closed Road</li> <li> Existing "Unauthorized" Roads</li> <li> Decommissioned Roads</li> <li> Structure</li> <li> Wildfire Daily Fire Perimeter</li> <li> PACE: primary</li> <li> PACE: alternate</li> <li> PACE: contingency</li> <li> PACE: emergency</li> </ul>	<p><b>FIREYEAR</b></p> <ul style="list-style-type: none"> <li> 1990-1999</li> <li> 2000-2009</li> <li> 2015-2017</li> <li> Roadless Conservation</li> <li> Wilderness</li> </ul>	<ul style="list-style-type: none"> <li> FS</li> <li> PVT</li> <li> WA Dept of F&amp;W</li> <li> Washington DNR</li> </ul>
---	---	--	--	---	--	---