

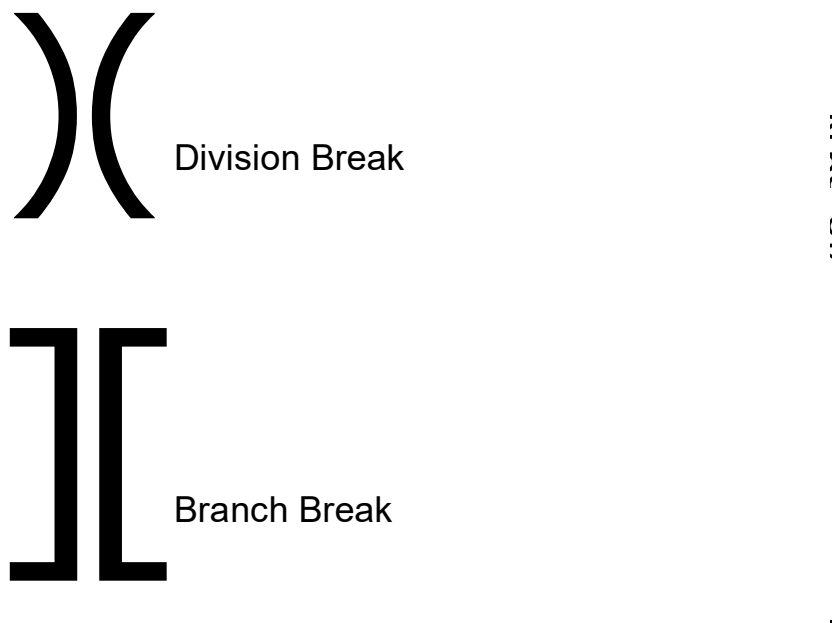
120°32'W 120°31'W 120°30'W 120°29'W 120°28'W 120°27'W 120°26'W 120°25'W 120°24'W 120°23'W 120°22'W 120°21'W 120°20'W 120°19'W 120°18'W 120°17'W 120°16'W 120°15'W 120°14'W 120°13'W 120°12'W 120°11'W 120°10'W 120°9'W

**McLeod**  
**WA-OWF-000522**  
**9/5/2018 Day**

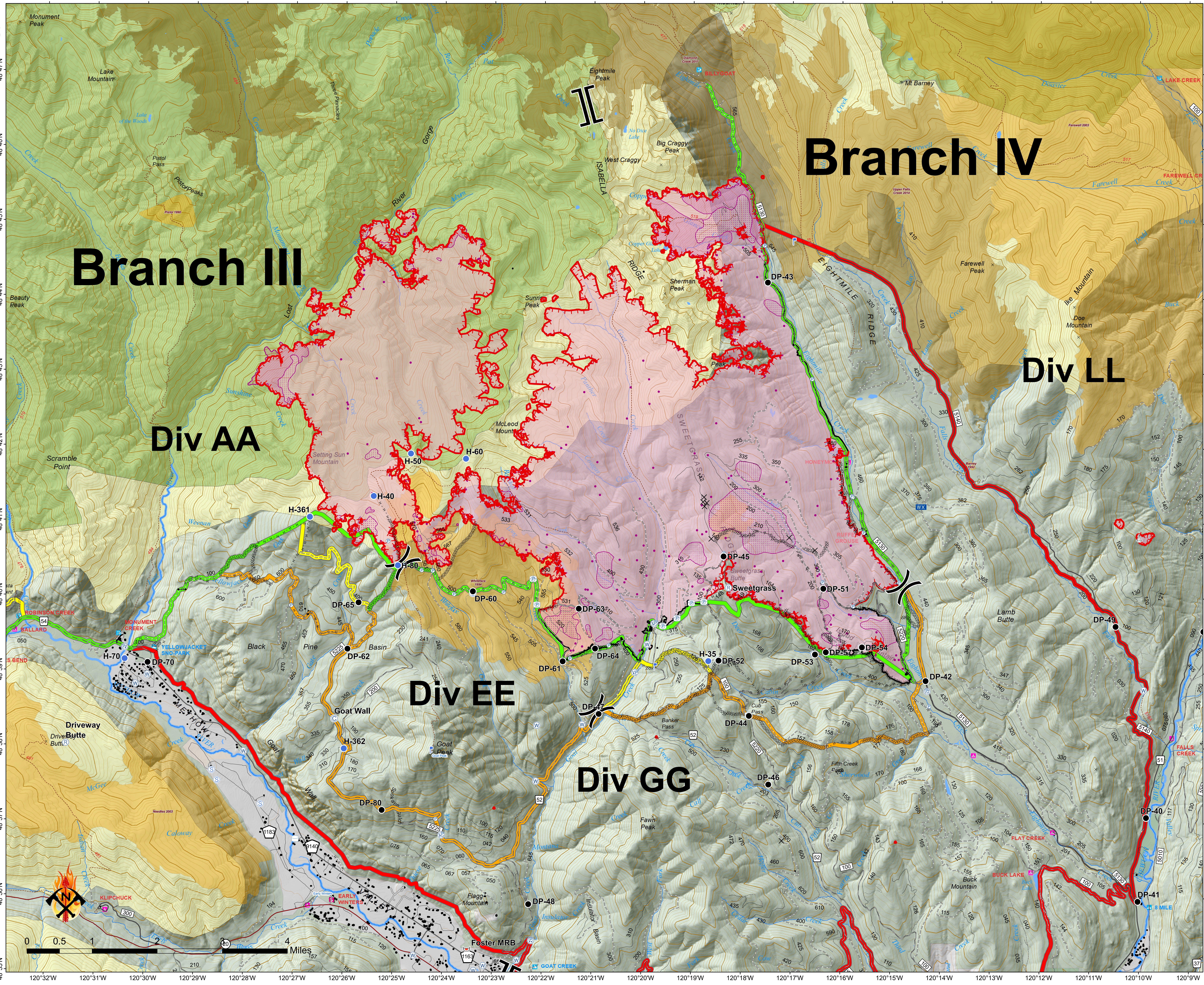


**Operations Map**  
**Approx Acreage: 22,511**

- Wildfire Daily Fire Perimeter
- PACE: primary
- PACE: alternate
- PACE: contingency
- PACE: emergency
- 20180904\_1959\_McLeod\_IsolatedHeatPoints
- 20180904\_1959\_McLeod\_HeatPerimeter
- 20180904\_1959\_McLeod\_IntenseHeat
- 20180904\_1959\_McLeod\_ScatteredHeat
- Uncontrolled Fire Edge
- Completed Line
- Completed Dozer Line
- Completed Hand Line
- Road as Completed Line
- Access or Improved Road
- Active Burnout
- Camp
- Closure
- Drop Point
- Gate
- Helispot
- Lookout
- Mobile Weather Unit
- Pump
- Repeater
- Retardant/Mud Pit
- Sling Site
- Staging Area
- Water Source
- Water Tank
- Value at Risk



- Ranger District
- Fire History**
- 1990-1999
- 2000-2009
- 2010-2014
- 2015-2017
- Managed Lands**
- FS
- PVT
- USFWS
- WA Dept of F&W
- Roadless Conservation
- Wilderness



# Branch III

# Branch IV

## Div AA

## Div EE

## Div GG

## Div LL

48°47'N  
48°46'N  
48°45'N  
48°44'N  
48°43'N  
48°42'N  
48°41'N  
48°40'N  
48°39'N  
48°38'N  
48°37'N  
48°36'N  
48°35'N

120°32'W  
120°31'W  
120°30'W  
120°29'W  
120°28'W  
120°27'W  
120°26'W  
120°25'W  
120°24'W  
120°23'W  
120°22'W  
120°21'W  
120°20'W  
120°19'W  
120°18'W  
120°17'W  
120°16'W  
120°15'W  
120°14'W  
120°13'W  
120°12'W  
120°11'W  
120°10'W  
120°9'W