

Transportation Map

Crescent Mountain Fire

McLeod Fire

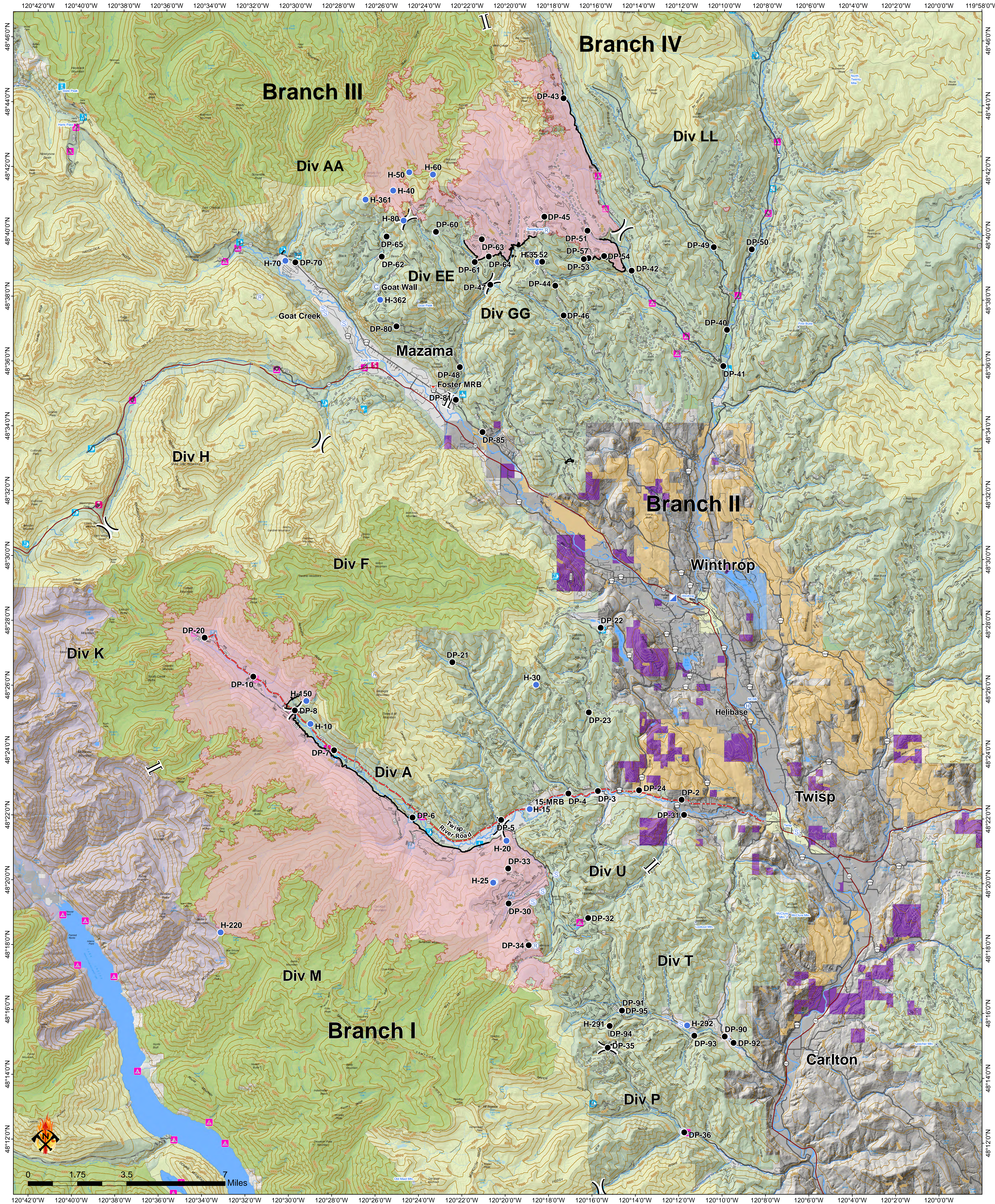
9/5/2018

WA-OWF-000428

WA-OWF-000522

Approx Acreage: 46,650

Approx Acreage: 22,511



● Camp	● Helispot	Ⓢ Staging Area	Branch Break	▭ Wildfire Daily Fire Perimeter	— County Roads	— Road Not Suitable for Passenger Car	Owner	▭ PVT	▭ WA Dept of F&W
● Drop Point	Ⓜ Incident Command Post	Ⓢ Division Break	Completed Line	▭ Retardant/Mud Pit	— City, Private Roads	— Closed Road	▭ FS	▭ USFWS	▭ WA State Parks
Ⓜ Helibase	Ⓜ Repeater		▭ Twisp River Road		— Paved Road	— Existing "Unauthorized" Roads	▭ NPS	▭ State and Other	▭ Washington DNR
			▭ Highway		— Gravel Road, Suitable for Passenger Car	— Decommissioned Roads	▭ City or Municipality	▭ Roadless Conservation	