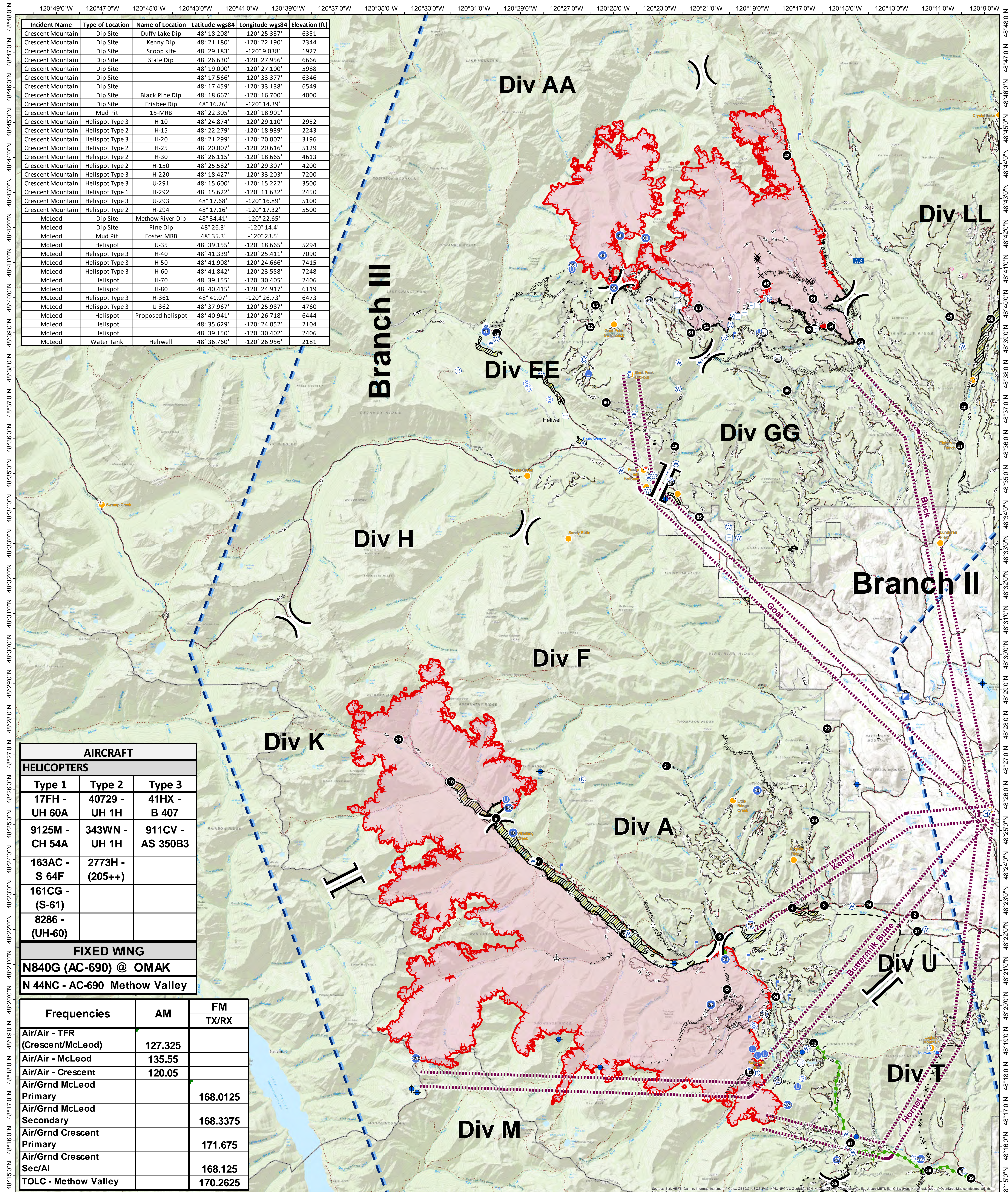


Air Ops Briefing Map

Crescent Mountain Fire
WA-OWF-000428
Acreage: 49,277

McLeod Fire
WA-OWF-000522
Acreage: 22,511



Incident Name	Type of Location	Name of Location	Latitude wgs84	Longitude wgs84	Elevation (ft)
Crescent Mountain	Dip Site	Duffy Lake Dip	48° 18.208'	-120° 25.337'	6351
Crescent Mountain	Dip Site	Kenny Dip	48° 21.180'	-120° 22.190'	2344
Crescent Mountain	Dip Site	Scoop site	48° 29.183'	-120° 9.038'	1927
Crescent Mountain	Dip Site	Slate Dip	48° 26.630'	-120° 27.956'	6666
Crescent Mountain	Dip Site		48° 19.000'	-120° 27.100'	5988
Crescent Mountain	Dip Site		48° 17.566'	-120° 33.377'	6346
Crescent Mountain	Dip Site		48° 17.459'	-120° 33.138'	6549
Crescent Mountain	Dip Site	Black Pine Dip	48° 18.667'	-120° 16.700'	4000
Crescent Mountain	Dip Site	Frisbee Dip	48° 16.26'	-120° 14.39'	
Crescent Mountain	Mud Pit	15-MRB	48° 22.305'	-120° 18.901'	
Crescent Mountain	Helispot Type 3	H-10	48° 24.874'	-120° 29.110'	2952
Crescent Mountain	Helispot Type 2	H-15	48° 22.279'	-120° 18.939'	2243
Crescent Mountain	Helispot Type 2	H-20	48° 21.299'	-120° 20.007'	3196
Crescent Mountain	Helispot Type 2	H-25	48° 20.007'	-120° 20.616'	5129
Crescent Mountain	Helispot Type 2	H-30	48° 26.115'	-120° 18.665'	4613
Crescent Mountain	Helispot Type 2	H-150	48° 25.582'	-120° 29.307'	4200
Crescent Mountain	Helispot Type 3	H-220	48° 18.427'	-120° 33.203'	7200
Crescent Mountain	Helispot Type 3	U-291	48° 15.600'	-120° 15.222'	3500
Crescent Mountain	Helispot Type 1	H-292	48° 15.622'	-120° 11.632'	2450
Crescent Mountain	Helispot Type 3	U-293	48° 17.68'	-120° 16.89'	5100
Crescent Mountain	Helispot Type 2	H-294	48° 17.16'	-120° 17.32'	5500
McLeod	Dip Site	Methow River Dip	48° 34.41'	-120° 22.65'	
McLeod	Dip Site	Pine Dip	48° 26.3'	-120° 14.4'	
McLeod	Mud Pit	Foster MRB	48° 35.3'	-120° 23.5'	
McLeod	Helispot	U-35	48° 39.155'	-120° 18.665'	5294
McLeod	Helispot Type 3	H-40	48° 41.339'	-120° 25.411'	7090
McLeod	Helispot Type 3	H-50	48° 41.908'	-120° 24.666'	7415
McLeod	Helispot Type 3	H-60	48° 41.842'	-120° 23.558'	7248
McLeod	Helispot	H-70	48° 39.155'	-120° 30.405'	2406
McLeod	Helispot	H-80	48° 40.415'	-120° 24.917'	6119
McLeod	Helispot Type 3	H-361	48° 41.07'	-120° 26.73'	6473
McLeod	Helispot Type 3	U-362	48° 37.967'	-120° 25.987'	4760
McLeod	Helispot	Proposed helispot	48° 40.941'	-120° 26.718'	6444
McLeod	Helispot		48° 35.629'	-120° 24.052'	2104
McLeod	Helispot		48° 39.150'	-120° 30.402'	2406
McLeod	Water Tank	Heliwell	48° 36.760'	-120° 26.956'	2181

AIRCRAFT		
HELICOPTERS		
Type 1	Type 2	Type 3
17FH - UH 60A	40729 - UH 1H	41HX - B 407
9125M - CH 54A	343WN - UH 1H	911CV - AS 350B3
163AC - S 64F	2773H - (205++)	
161CG - (S-61)		
8286 - (UH-60)		
FIXED WING		
N840G (AC-690) @ OMAK		
N 44NC - AC-690 Methow Valley		

Frequencies	AM	FM TX/RX
Air/Air - TFR (Crescent/McLeod)	127.325	
Air/Air - McLeod	135.55	
Air/Air - Crescent	120.05	
Air/Grnd McLeod Primary		168.0125
Air/Grnd McLeod Secondary		168.3375
Air/Grnd Crescent Primary		171.675
Air/Grnd Crescent Sec/Al		168.125
TOLC - Methow Valley		170.2625

Legend:

- MVRD Helispot
- Radio Tower
- Camp
- Closure
- Value at Risk
- Lookout
- Dip Site
- Helispot
- Drop Point
- Helibase
- Unimproved Landing Area
- Incident Command Post
- Mobile Weather Unit
- Repeater
- Sling Site
- Staging Area
- Water Source
- Water Tank
- Division Break
- Branch Branch
- Completed Line
- Completed Dozer Line
- Completed Hand Line
- R - R Road as Completed Line
- Access or Improved Road
- Uncontrolled Fire Edge
- Active Burnout
- Proposed Dozer Line
- Planned Fire Line
- Aerial Retardant Drop
- Air Tanker Retardant
- Escape Route
- Other
- Road
- 1 - BASIC CUSTODIAL CARE (CLOSED)
- 2 - HIGH CLEARANCE VEHICLES
- 3 - SUITABLE FOR PASSENGER CARS
- 4 - MODERATE DEGREE OF USER COMFORT
- CLOSED/DECOMM
- Twisp River Road
- Trails
- Wildfire Daily Fire Perimeter
- Retardant Avoidance Areas

9/6/2018 @ 2158
NAD 83 USFS R6 Albers (Meters)

09/07/2018

All Products QR Code

0 0.5 1 2 3 4 Miles