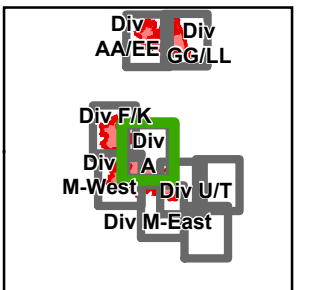


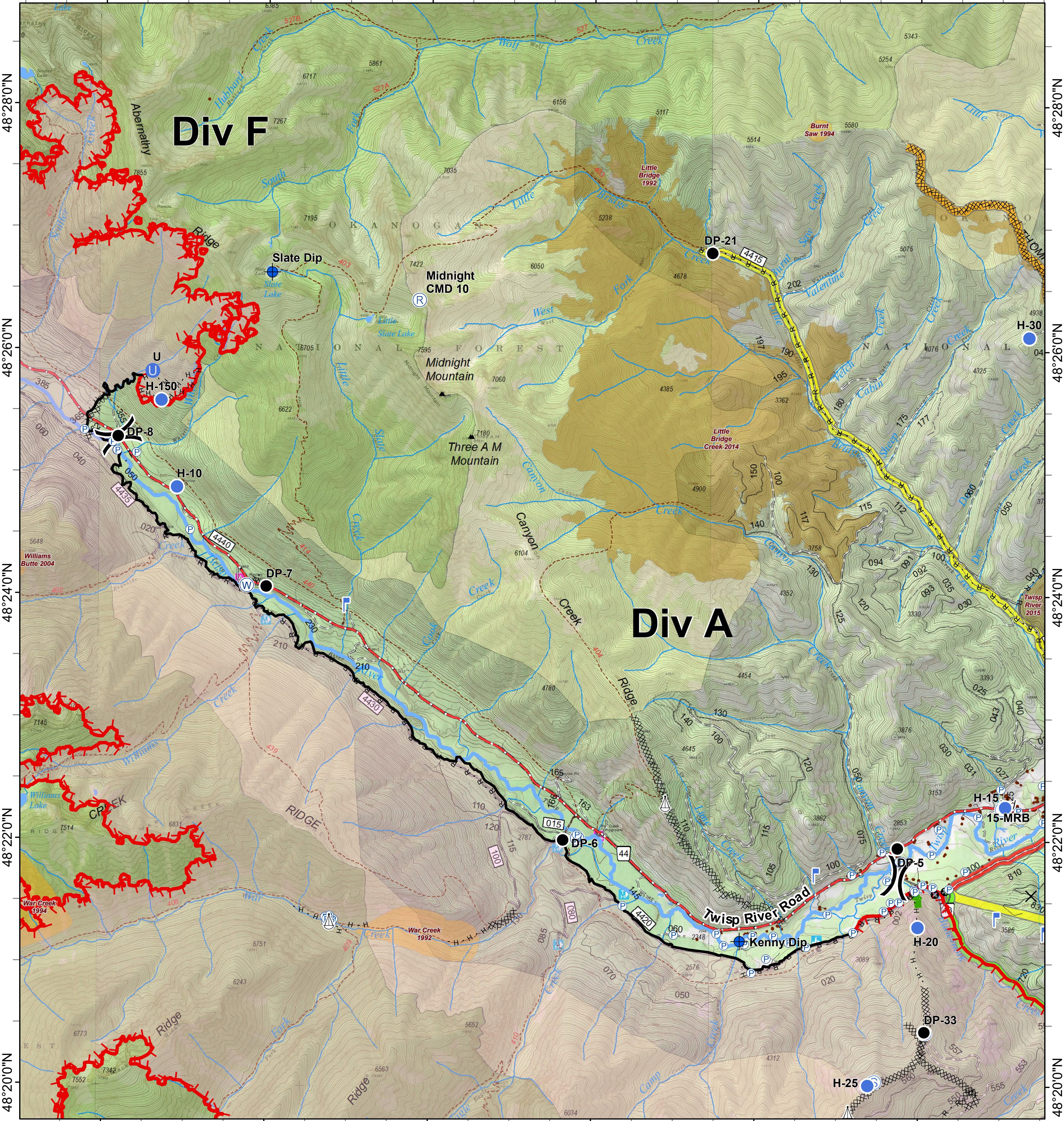


Crescent Mountain Fire

WA-OWF-000422
49,277 Acres



120°30'0"W 120°28'0"W 120°26'0"W 120°24'0"W 120°22'0"W 120°20'0"W



0 0.25 0.5 1 Miles

- Closure
- Dip Site
- Drop Point
- Unimproved Landing Area
- Helispot
- Lookout
- Pump
- Repeater
- Retardant/Mud Pit
- Sling Site
- Staging Area
- Water Source
- Division Break
- Uncontrolled Fire Edge
- Completed Line

- Completed Dozer Line
- Completed Hand Line
- Road as Completed Line
- Aerial Retardant Drop
- Air Tanker Retardant
- Escape Route
- Other
- Trail

- Twisp River Road
- County Roads
- Other County Roads
- City, Private Roads
- Paved Road
- Gravel Road, Suitable for Passenger Car
- Dirt Road, Suitable for Passenger Car
- Road Not Suitable for Passenger Car

- Closed Road
- Existing "Unauthorized" Roads
- Decommissioned Roads
- Structure
- Wildfire Daily Fire Perimeter
- PACE: primary
- PACE: alternate
- PACE: contingency
- PACE: emergency

- FIREYEAR**
- 1990-1999
 - 2000-2009
 - 2010-2014
 - 2015-2017
 - Roadless Conservation
 - Wilderness

- FS
- PVT

