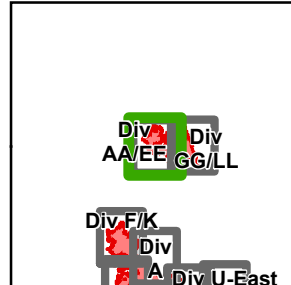




McLeod Fire

WA-OWF-000422
49,277 Acres



120°30'0"W

120°28'0"W

120°26'0"W

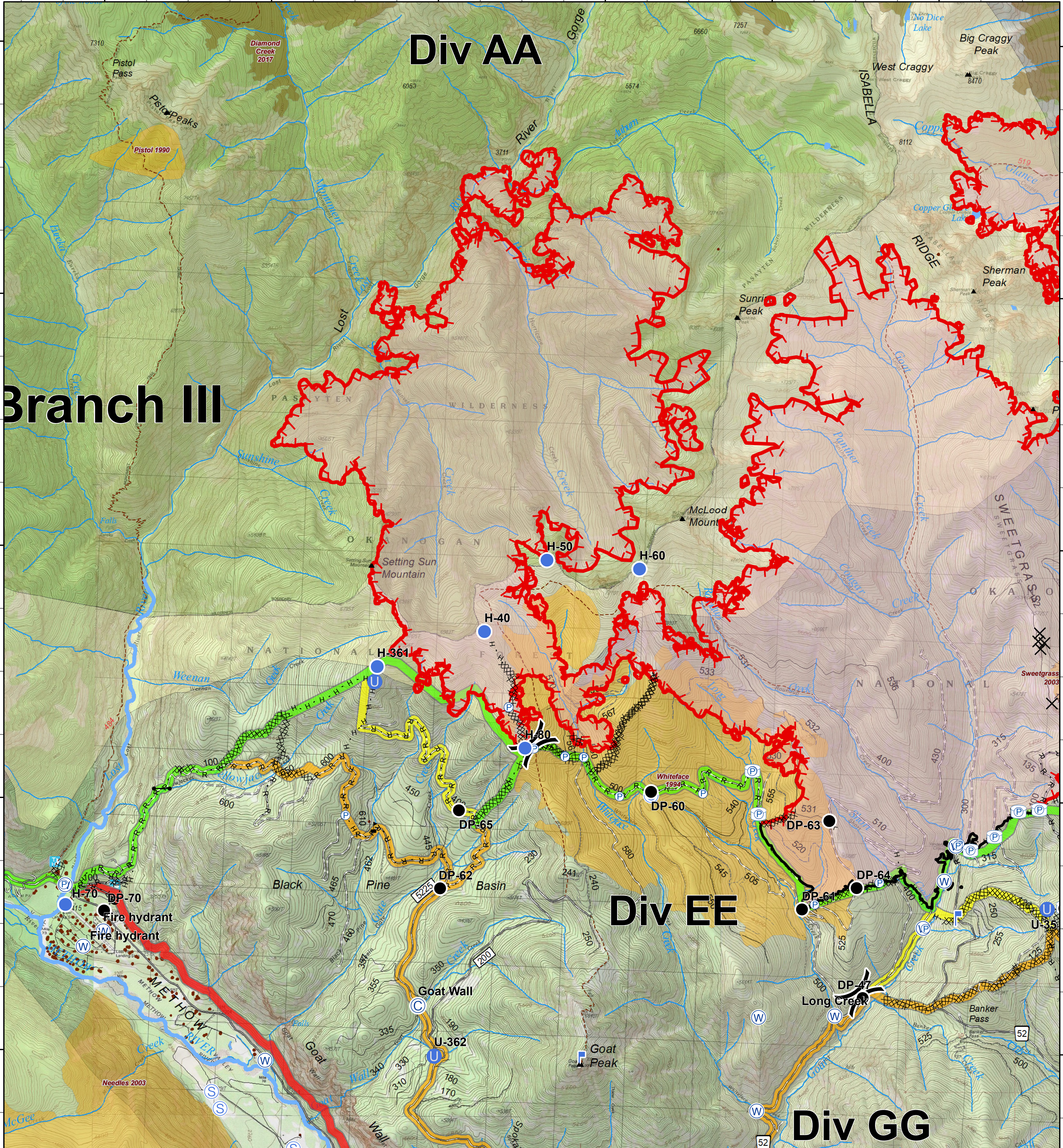
120°24'0"W

120°22'0"W

120°20'0"W

48°46'0"N
48°44'0"N
48°42'0"N
48°40'0"N
48°38'0"N

48°46'0"N
48°44'0"N
48°42'0"N
48°40'0"N
48°38'0"N



<ul style="list-style-type: none"> ⊙ Camp ✕ Closure ● Drop Point — Gate ⊙ Unimproved Landing Area 	<ul style="list-style-type: none"> ● Helispot ⌚ Lookout Ⓟ Pump Ⓢ Staging Area Ⓜ Water Source 	<ul style="list-style-type: none"> ⚠ Value at Risk) Division Break ⚠ Uncontrolled Fire Edge 	<ul style="list-style-type: none"> — Completed Line ⊗ Completed Dozer Line H - H Completed Hand Line R - R Road as Completed Line ○ Aerial Retardant Drop ⊕ Other — Trail — County Roads — Other County Roadsd — City, Private Roads — Gravel Road, Suitable for Passenger Car — Road Not Suitable for Passenger Car 	<ul style="list-style-type: none"> — Closed Road — Existing "Unauthorized" Roads — Decommissioned Roads ■ Structure — Wildfire Daily Fire Perimeter — PACE: primary — PACE: alternate — PACE: contingency — PACE: emergency 	<ul style="list-style-type: none"> 1990-1999 2000-2009 2015-2017 Roadless Conservation Wilderness 	<ul style="list-style-type: none"> 120°30'0"W 120°28'0"W 120°26'0"W 120°24'0"W 120°22'0"W 120°20'0"W 	<ul style="list-style-type: none"> 120°30'0"W 120°28'0"W 120°26'0"W 120°24'0"W 120°22'0"W 120°20'0"W 	<ul style="list-style-type: none"> 0 0.25 0.5 1 Miles
--	---	---	--	--	--	--	--	--

