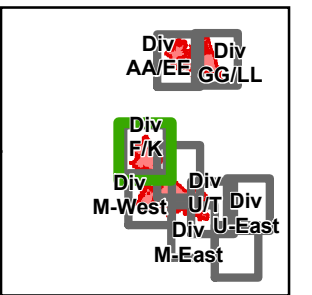


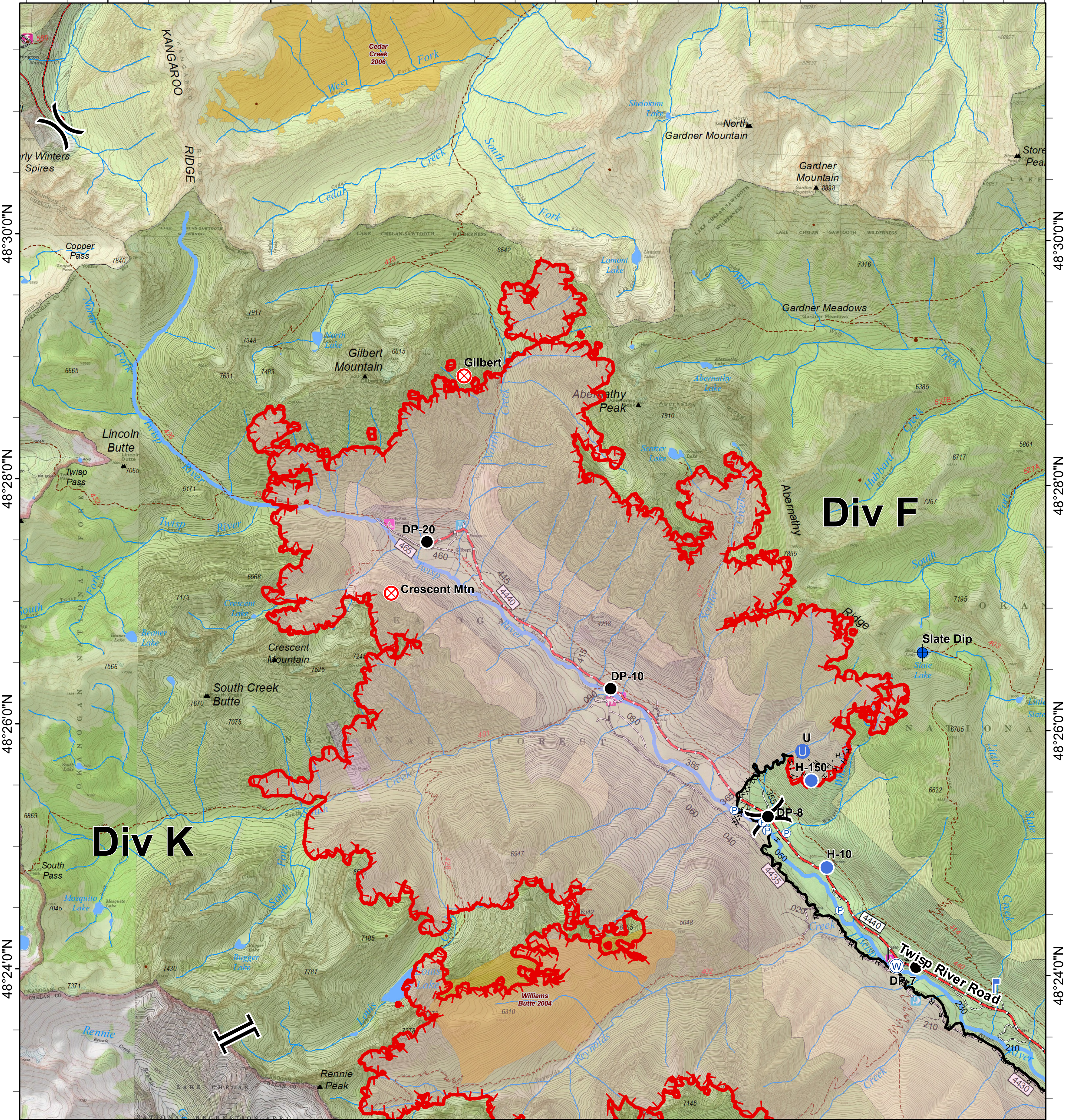


# Crescent Mountain Fire

WA-OWF-000422  
49,277 Acres



120°38'0"W      120°36'0"W      120°34'0"W      120°32'0"W      120°30'0"W      120°28'0"W



Div K

Div F

0 0.25 0.5 1 Miles

<ul style="list-style-type: none"> <li> Dip Site</li> <li> Drop Point</li> <li> Fire Origin</li> <li> Unimproved Landing Area</li> <li> Helispot</li> </ul>	<ul style="list-style-type: none"> <li> Lookout</li> <li> Pump</li> <li> Water Source</li> </ul>	<ul style="list-style-type: none"> <li> Division Break</li> <li> Branch Break</li> <li> Uncontrolled Fire Edge</li> </ul>	<ul style="list-style-type: none"> <li> Completed Line</li> <li> Completed Dozer Line</li> <li> H - H Completed Hand Line</li> <li> R - R Road as Completed Line</li> <li> Aerial Retardant Drop</li> <li> Trail</li> <li> Twisp River Road</li> <li> Highway</li> <li> City, Private Roads</li> <li> Paved Road</li> <li> Gravel Road, Suitable for Passenger Car</li> <li> Dirt Road, Suitable for Passenger Car</li> <li> Road Not Suitable for Passenger Car</li> </ul>	<ul style="list-style-type: none"> <li> Closed Road</li> <li> Existing "Unauthorized" Roads</li> <li> Structure</li> <li> Wildfire Daily Fire Perimeter</li> </ul>	<p><b>FIREYEAR</b></p> <ul style="list-style-type: none"> <li> 2000-2009</li> <li> Roadless Conservation</li> <li> Wilderness</li> </ul>	<ul style="list-style-type: none"> <li> FS</li> <li> NPS</li> <li> PVT</li> </ul>
---	--	---	---	--	--	---

