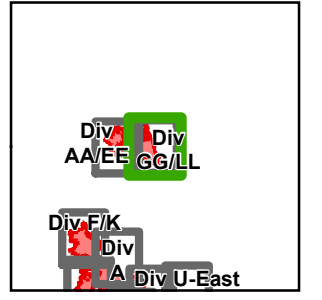


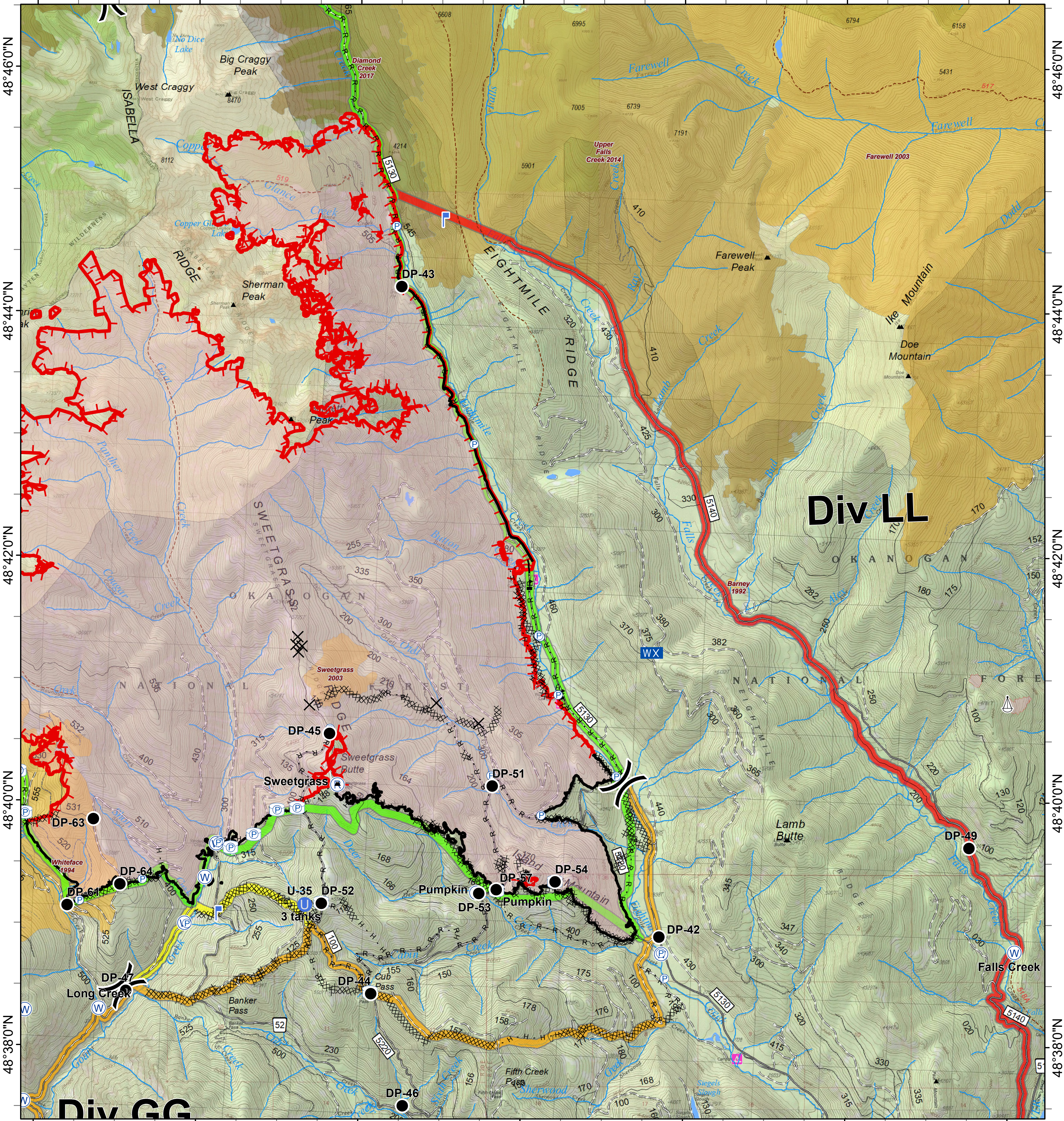


McLeod Fire

WA-OWF-000422
49,277 Acres



120°22'0"W 120°20'0"W 120°18'0"W 120°16'0"W 120°14'0"W 120°12'0"W 120°10'0"W



120°22'0"W 120°20'0"W 120°18'0"W 120°16'0"W 120°14'0"W 120°12'0"W 120°10'0"W

<ul style="list-style-type: none"> X Closure ● Drop Point U Unimproved Landing Area ⌚ Lookout WX Mobile Weather Unit 	<ul style="list-style-type: none"> P Pump R Repeater ⚙ Sling Site W Water Source Water Tank 	<ul style="list-style-type: none"> ▲ Value at Risk ⎓ Division Break — Completed Line XXXXX Completed Dozer Line H · H Completed Hand Line R · R Road as Completed Line — Trail — City, Private Roads — Paved Road — Gravel Road, Suitable for Passenger Car — Dirt Road, Suitable for Passenger Car — Road Not Suitable for Passenger Car 	<ul style="list-style-type: none"> — Closed Road --- Existing "Unauthorized" Roads --- Decommissioned Roads ■ Structure ■ Wildfire Daily Fire Perimeter ■ PACE: primary ■ PACE: alternate ■ PACE: contingency ■ PACE: emergency 	<p>FIREYEAR</p> <ul style="list-style-type: none"> ■ 1990-1999 ■ 2000-2009 ■ 2010-2014 ■ 2015-2017 ■ Roadless Conservation ■ Wilderness 	<ul style="list-style-type: none"> ■ FS ■ USFWS ■ WA Dept of F&W
---	--	---	--	--	---

0 0.25 0.5 1 Miles

