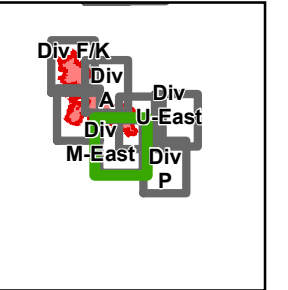


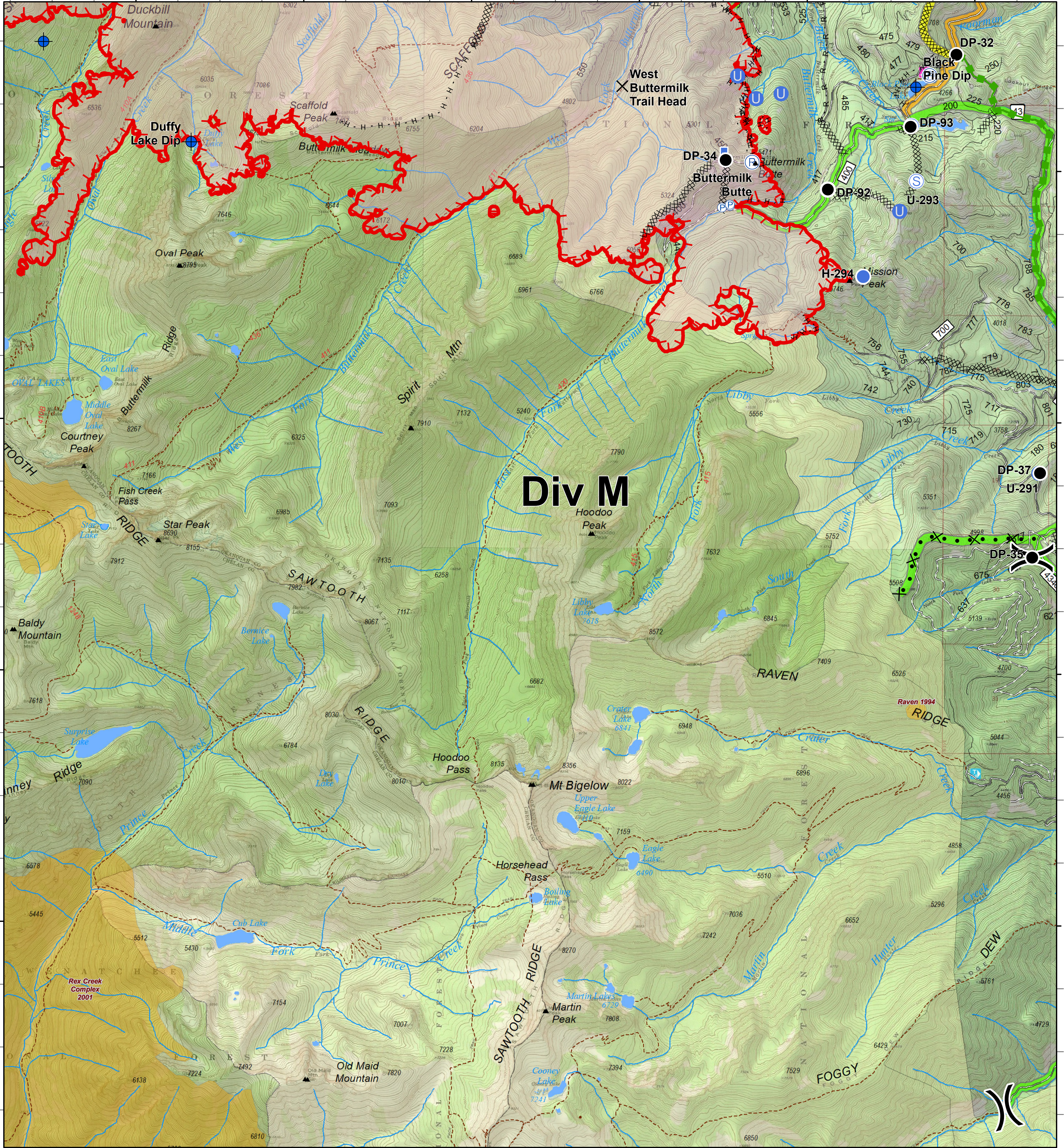


# Crescent Mountain Fire

WA-OWF-000422  
49,277 Acres



120°26'0"W      120°24'0"W      120°22'0"W      120°20'0"W      120°18'0"W      120°16'0"W



120°26'0"W      120°24'0"W      120°22'0"W      120°20'0"W      120°18'0"W      120°16'0"W

<ul style="list-style-type: none"> <li>✕ Closure</li> <li>● Dip Site</li> <li>● Drop Point</li> <li>U Unimproved Landing Area</li> </ul>	<ul style="list-style-type: none"> <li>● Helispot</li> <li>Lookout</li> <li>P Pump</li> <li>R Repeater</li> <li>S Staging Area</li> </ul>	<ul style="list-style-type: none"> <li>W Water Source</li> <li>Division Break</li> <li>Uncontrolled Fire Edge</li> <li>Completed Dozer Line</li> </ul>	<ul style="list-style-type: none"> <li>H · H Completed Hand Line</li> <li>R · R Road as Completed Line</li> <li>Proposed Dozer Line</li> <li>Aerial Retardant Drop</li> <li>Air Tanker Retardant</li> <li>City, Private Roads</li> <li>Gravel Road, Suitable for Passenger Car</li> <li>Dirt Road, Suitable for Passenger Car</li> <li>Road Not Suitable for Passenger Car</li> </ul>	<ul style="list-style-type: none"> <li>Closed Road</li> <li>Existing "Unauthorized" Roads</li> <li>Decommissioned Roads</li> <li>Structure</li> <li>Wildfire Daily Fire Perimeter</li> <li>PACE: primary</li> <li>PACE: alternate</li> <li>PACE: contingency</li> </ul>	<p><b>FIREYEAR</b></p> <ul style="list-style-type: none"> <li>1990-1999</li> <li>2000-2009</li> <li>Roadless Conservation</li> <li>Wilderness</li> </ul>	<ul style="list-style-type: none"> <li>FS</li> </ul>
--	---	--	---	---	--	--

0 0.25 0.5 1 Miles

