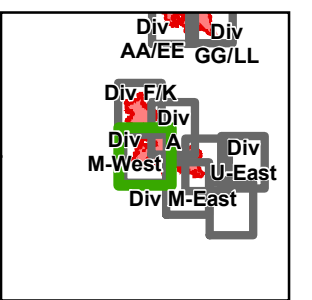


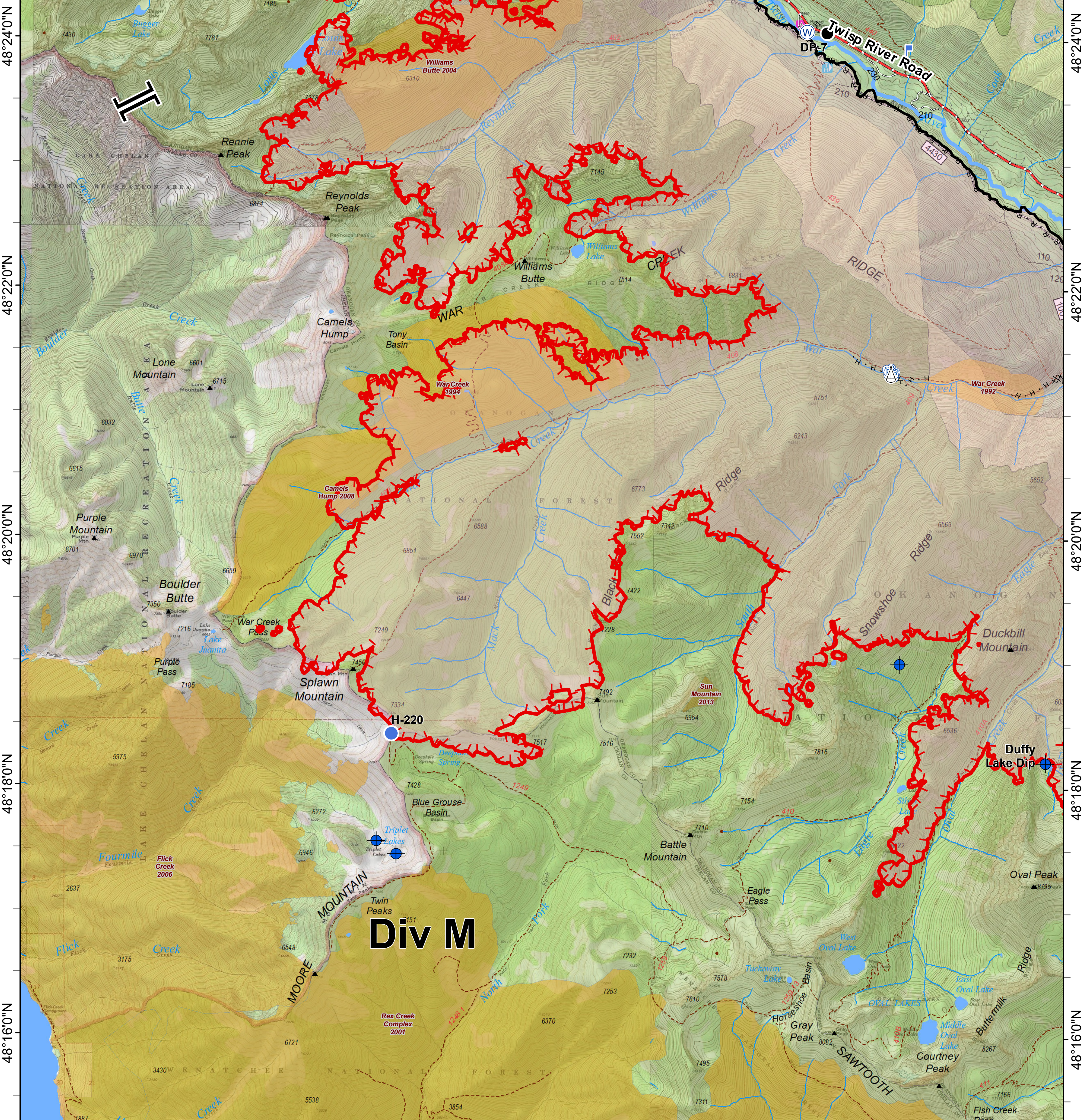


Crescent Mountain Fire

WA-OWF-000422
49,277 Acres



120°36'0"W 120°34'0"W 120°32'0"W 120°30'0"W 120°28'0"W 120°26'0"W



48°24'0"N 48°22'0"N 48°20'0"N 48°18'0"N 48°16'0"N

0 0.25 0.5 1 Miles

Dip Site	Lookout	Branch Break	Completed Line	Twisp River Road	Closed Road	FIREYEAR	FS
Drop Point	Pump	Sling Site	Completed Dozer Line	Paved Road	Existing "Unauthorized" Roads		1990-1999
Helispot	Water Source	Uncontrolled Fire Edge	H - H Completed Hand Line	Gravel Road, Suitable for Passenger Car	Decommissioned Roads	2000-2009	PVT
			R - R Road as Completed Line	Dirt Road, Suitable for Passenger Car	Structure	2010-2014	
			Trail	Road Not Suitable for Passenger Car	Wildfire Daily Fire Perimeter	Roadless Conservation	
						Wilderness	

