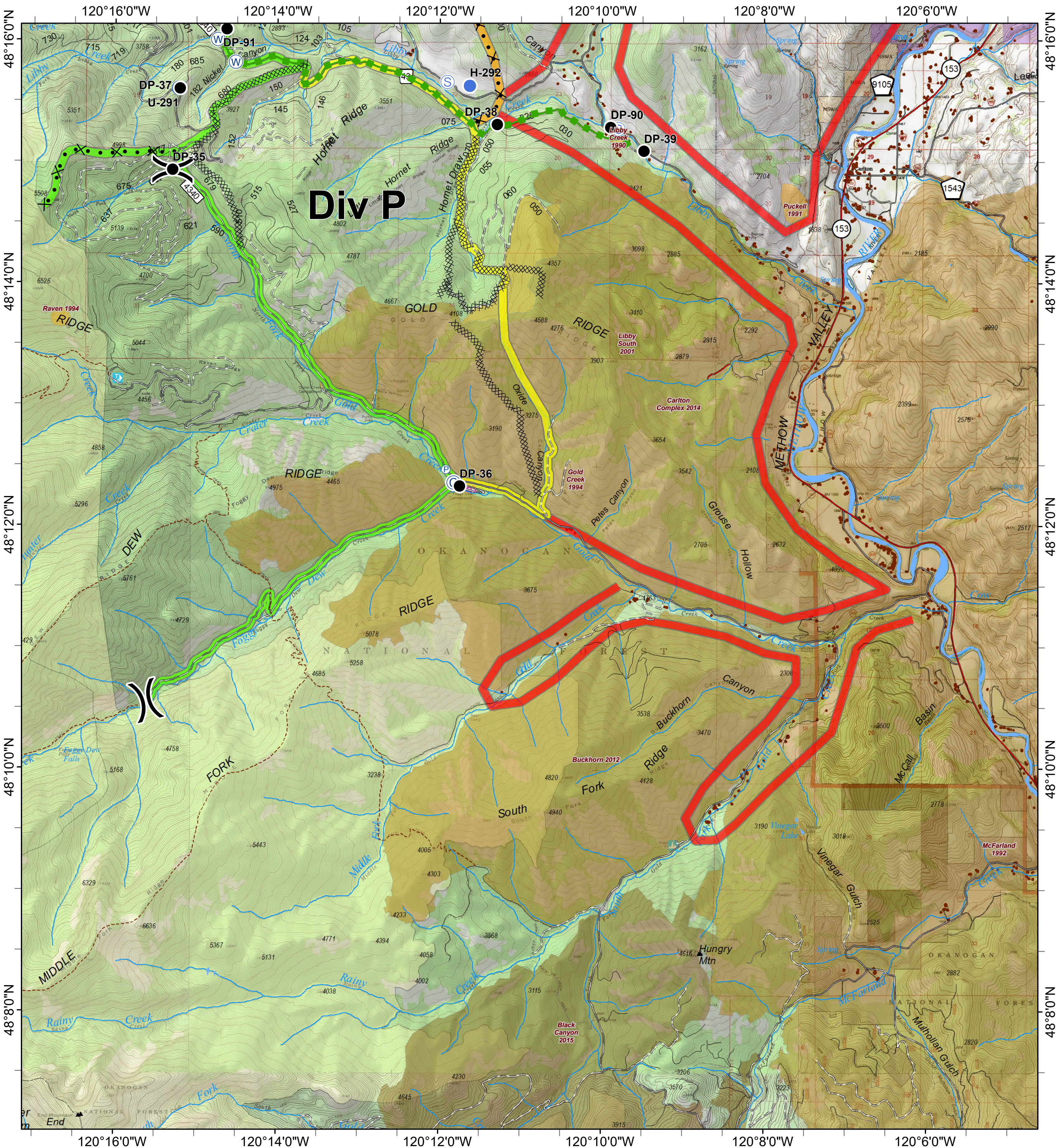
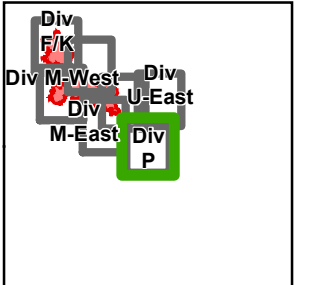




# Crescent Mountain Fire

WA-OWF-000422  
49,277 Acres



**Div P**

<ul style="list-style-type: none"> <li>⊙ Camp</li> <li>● Drop Point</li> <li>⊙ Unimproved Landing Area</li> </ul>	<ul style="list-style-type: none"> <li>● Helispot</li> <li>⊙ Pump</li> <li>⊙ Staging Area</li> <li>⊙ Water Source</li> </ul>	<ul style="list-style-type: none"> <li>⌋ Division Break</li> <li>⊗ Proposed Dozer Line</li> <li>— Escape Route</li> <li>- - - Trail</li> <li>— Highway</li> <li>— County Roads</li> <li>— Other County Roads</li> <li>— City, Private Roads</li> <li>— Paved Road</li> <li>— Gravel Road, Suitable for Passenger Car</li> <li>— Dirt Road, Suitable for Passenger Car</li> <li>— Road Not Suitable for Passenger Car</li> </ul>	<ul style="list-style-type: none"> <li>— Closed Road</li> <li>- - - Existing "Unauthorized" Roads</li> <li>- - - Decommissioned Roads</li> <li>■ Structure</li> <li>— PACE: primary</li> <li>— PACE: alternate</li> <li>— PACE: contingency</li> <li>— PACE: emergency</li> </ul>	<p><b>FIREYEAR</b></p> <ul style="list-style-type: none"> <li>■ 1990-1999</li> <li>■ 2000-2009</li> <li>■ 2010-2014</li> <li>■ 2015-2017</li> <li>■ Roadless Conservation</li> </ul>	<ul style="list-style-type: none"> <li>■ FS</li> <li>■ PVT</li> <li>■ WA Dept of F&amp;W</li> <li>■ Washington DNR</li> </ul>
---	--	---	---	--	---

0 0.25 0.5 1 Miles

