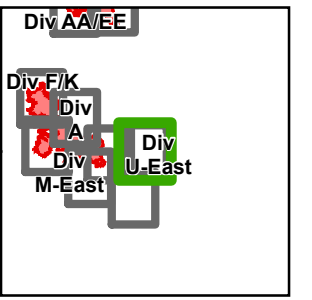


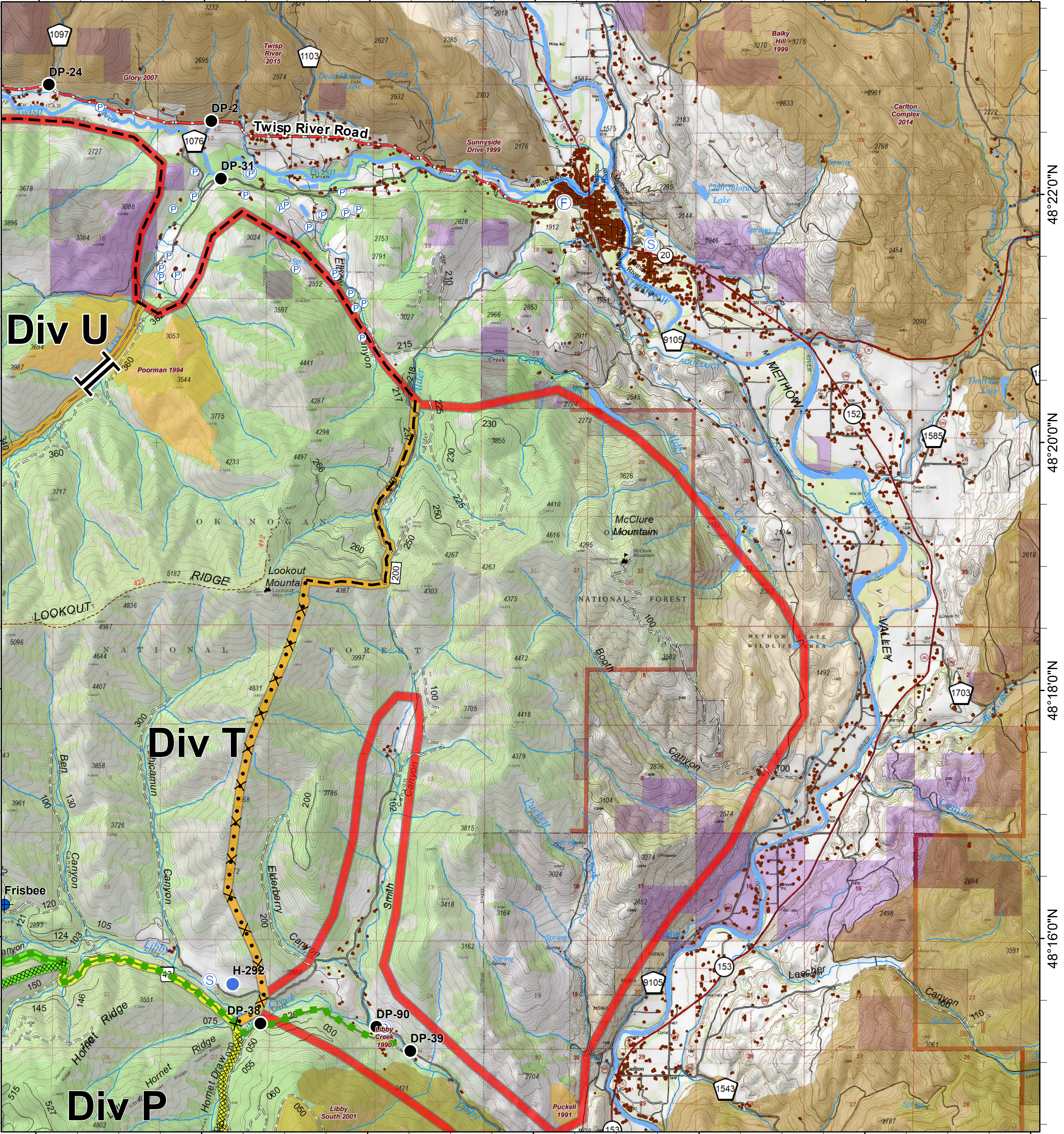


Crescent Mountain Fire

WA-OWF-000422
49,277 Acres



120°14'0"W 120°12'0"W 120°10'0"W 120°8'0"W 120°6'0"W 120°4'0"W 120°2'0"W



120°14'0"W 120°12'0"W 120°10'0"W 120°8'0"W 120°6'0"W 120°4'0"W 120°2'0"W

0 0.25 0.5 1 Miles

<ul style="list-style-type: none"> Dip Site Drop Point Fire Station Helispot Pump Staging Area Water Source Value at Risk Branch Break Completed Dozer Line 	<ul style="list-style-type: none"> Proposed Dozer Line Planned Fire Line Escape Route Trail Twisp River Road Highway County Roads Other County Roads City, Private Roads Private/Other Roads Paved Road Gravel Road, Suitable for Passenger Car Dirt Road, Suitable for Passenger Car Road Not Suitable for Passenger Car 	<ul style="list-style-type: none"> Closed Road Existing "Unauthorized" Roads Structure PACE: primary PACE: alternate PACE: contingency PACE: emergency 	<p>FIREYEAR</p> <ul style="list-style-type: none"> 1990-1999 2000-2009 2010-2014 2015-2017 	<ul style="list-style-type: none"> FS PVT WA Dept of F&W Washington DNR
---	---	--	---	---

