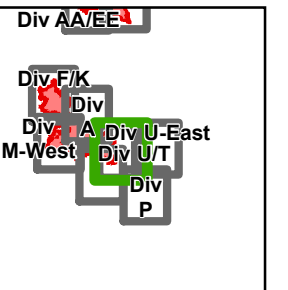


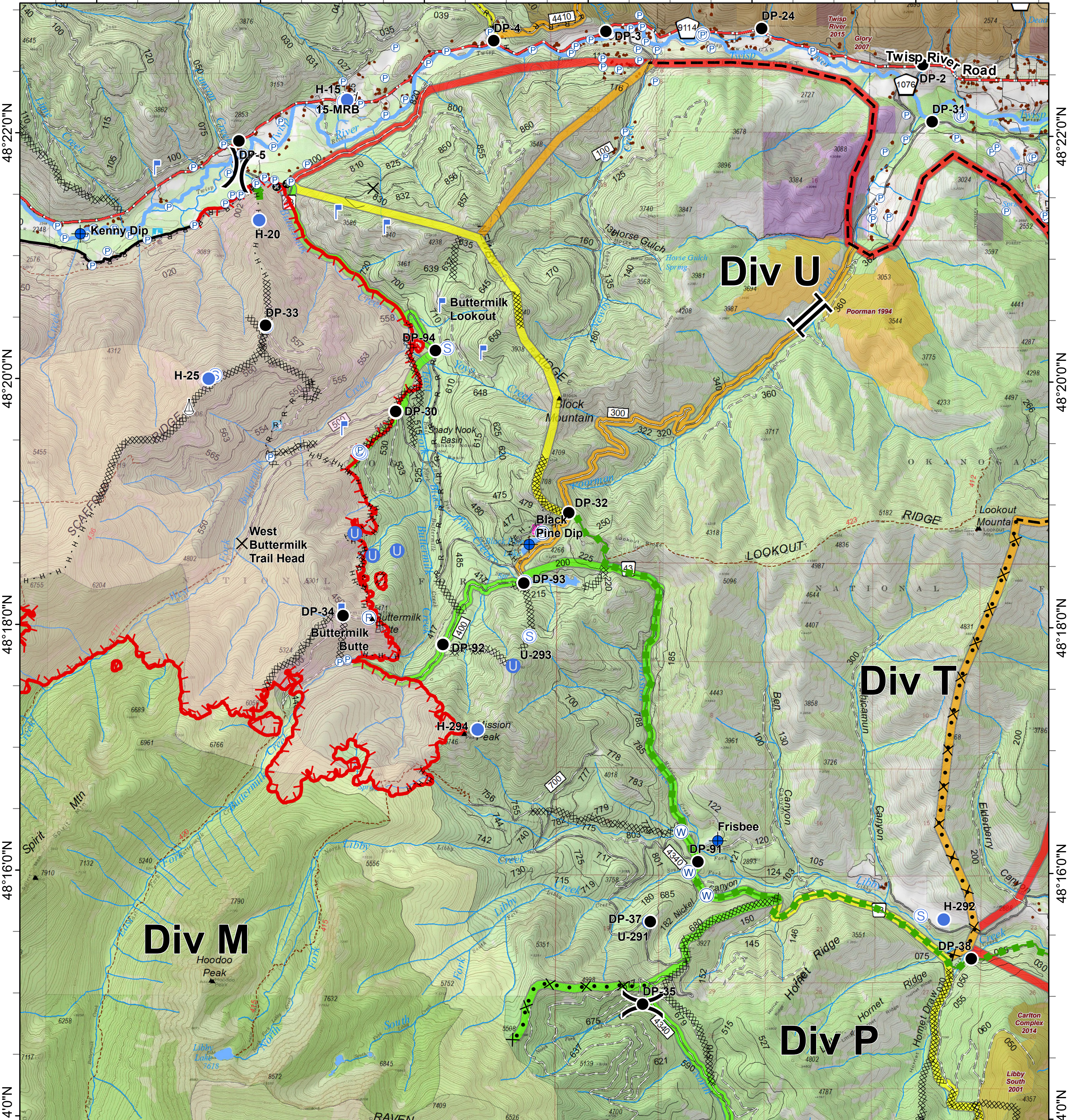


Crescent Mountain Fire

WA-OWF-000422
49,277 Acres



120°22'0"W 120°20'0"W 120°18'0"W 120°16'0"W 120°14'0"W 120°12'0"W



<ul style="list-style-type: none"> ✕ Closure ● Dip Site ● Drop Point U Unimproved Landing Area ● Helispot ⚡ Lookout 	<ul style="list-style-type: none"> P Pump R Repeater Retardant/Mud Pit ⚡ Sling Site S Staging Area W Water Source 	<ul style="list-style-type: none"> Division Break Branch Break Completed Dozer Line H · H Completed Hand Line R · R Road as Completed Line Proposed Dozer Line Planned Fire Line Aerial Retardant Drop Air Tanker Retardant Escape Route Other Trail 	<ul style="list-style-type: none"> Twisp River Road County Roads Other County Roads City, Private Roads Paved Road Gravel Road, Suitable for Passenger Car Dirt Road, Suitable for Passenger Car Road Not Suitable for Passenger Car 	<ul style="list-style-type: none"> Closed Road Existing "Unauthorized" Roads Decommissioned Roads Structure Wildfire Daily Fire Perimeter PACE: primary PACE: alternate PACE: contingency PACE: emergency 	<p>FIREYEAR</p> <ul style="list-style-type: none"> 1990-1999 2000-2009 2010-2014 2015-2017 Roadless Conservation Wilderness 	<ul style="list-style-type: none"> FS 0 0.25 0.5 1 Miles PVT WA Dept of F&W Washington DNR
---	---	--	--	--	--	--