

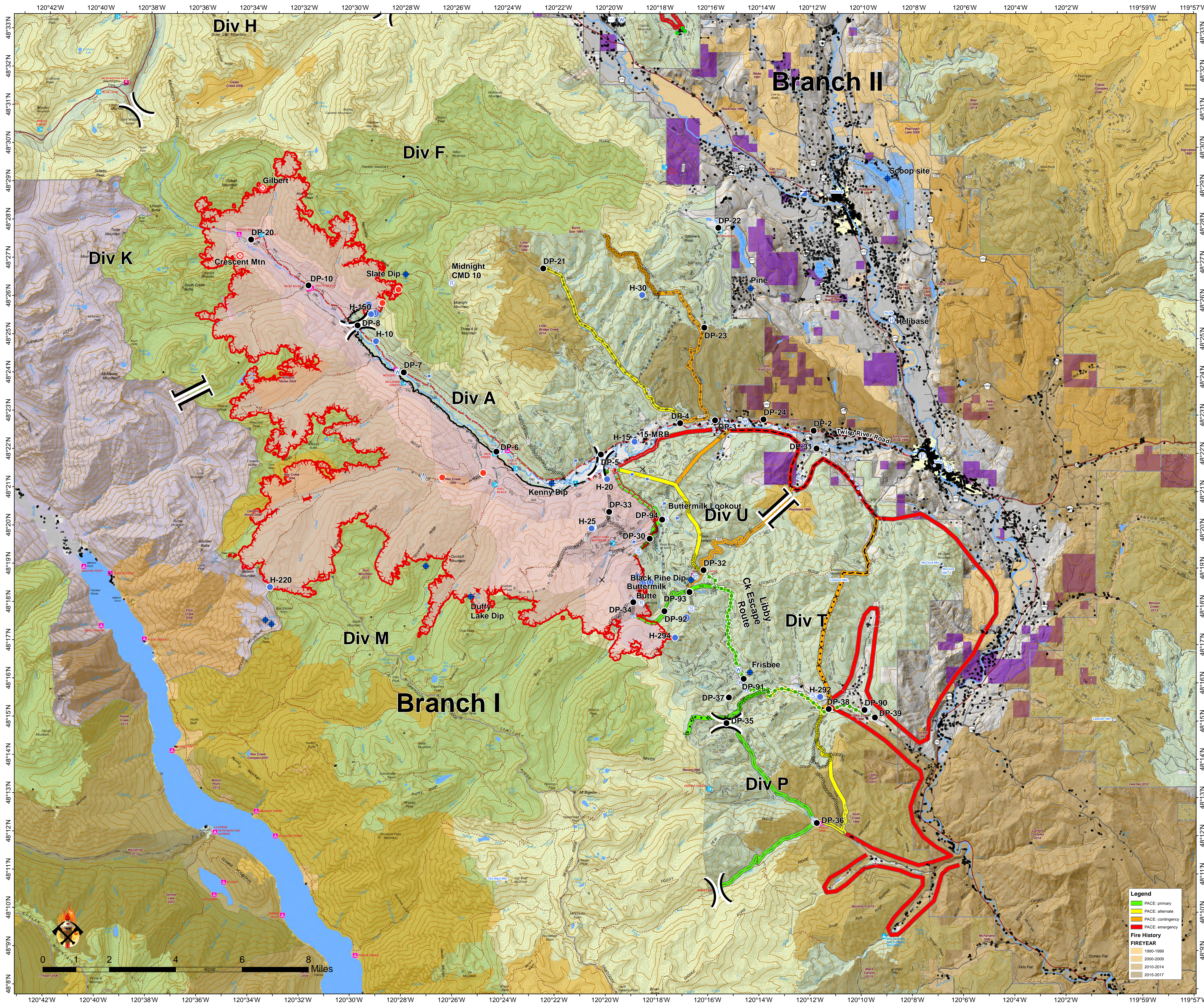
**Crescent Mountain
WA-OWF-000428
09/07/2018 Day**



**Operations
Map**
Approx Acreage:
49,277

- Camp
 - Closure
 - Dip Site
 - Drop Point
 - Fire Origin
 - Fire Station
 - Gate
 - Helibase
 - Unimproved Landing Area
 - Helispot
 - Hot Spot
 - Incident Command Post
 - Landmark
 - Lookout
 - Pump
 - Repeater
 - Retardant/Mud Pit
 - Sling Site
 - Staging Area
 - Water Source
 - Water Tank
 - Value at Risk
- Division Break
- Branch Break

- Wildfire Daily Fire Perimeter
 - Structure
 - Town
 - Ranger District
 - Roadless Conservation
 - Wilderness
- Owner**
- FS
 - NPS
 - PVT
 - USFWS
- State Owned and Managed Lands**
- MANAGER**
- City or Municipality
 - WA Dept of F&W
 - WA State Parks
 - Washington DNR



Legend

- PACE: primary
- PACE: alternate
- PACE: contingency
- PACE: emergency

Fire History

FIREYEAR

- 1990-1999
- 2000-2009
- 2010-2014
- 2015-2017



Crescent Mountain OPS
Avenida Map QR Code