

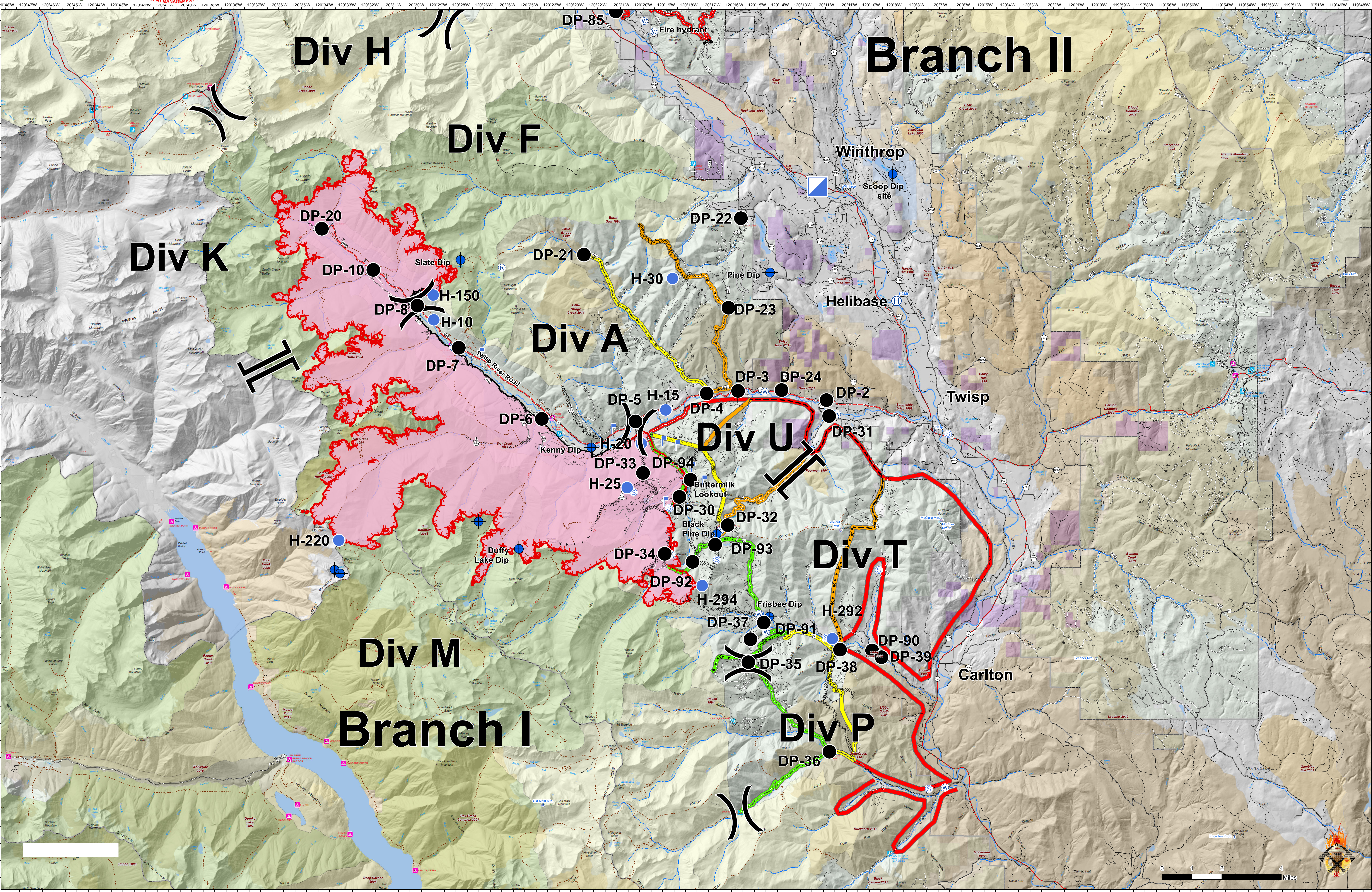


Briefing Map

Crescent Mountain Fire WA-OWF-000428

09/08/2018

Approx Acreage: 49,577



● Camp	● Helispot	🚒 Retardant/Mud Pit	⚡ Division Break	----- Completed Hand Line	----- Planned Fire Line	Fire History	Land Manager	🌲 Roadless Conservation	🏘 City or Municipality	🟢 PACE: primary
⚡ Dip Site	📡 Incident Command Post	📡 Sling Site	Branch Break	----- Road as Completed Line	◇◇◇◇ Aerial Retardant Drop	🟡 1990-1999	🌲 FS	🌲 Wilderness	🏘 WA Dept of F&W	🟡 PACE: alternate
● Drop Point	📡 Lookout	📡 Staging Area	— Completed Line	— Access or Improved Road	◇◇◇◇ Air Tanker Retardant	🟠 2000-2009	🏘 NPS	🏘 Washington DNR	🏘 WA State Parks	🟠 PACE: contingency
📡 Helibase	📡 Repeater	📡 Water Source	⚡ Completed Dozer Line	⚡ Proposed Dozer Line	🔴 Uncontrolled Fire Edge	🟤 2010-2014	🏘 PVT		🏘 Washington DNR	🔴 PACE: emergency
						🟤 2015-2017	🌲 USFWS			