

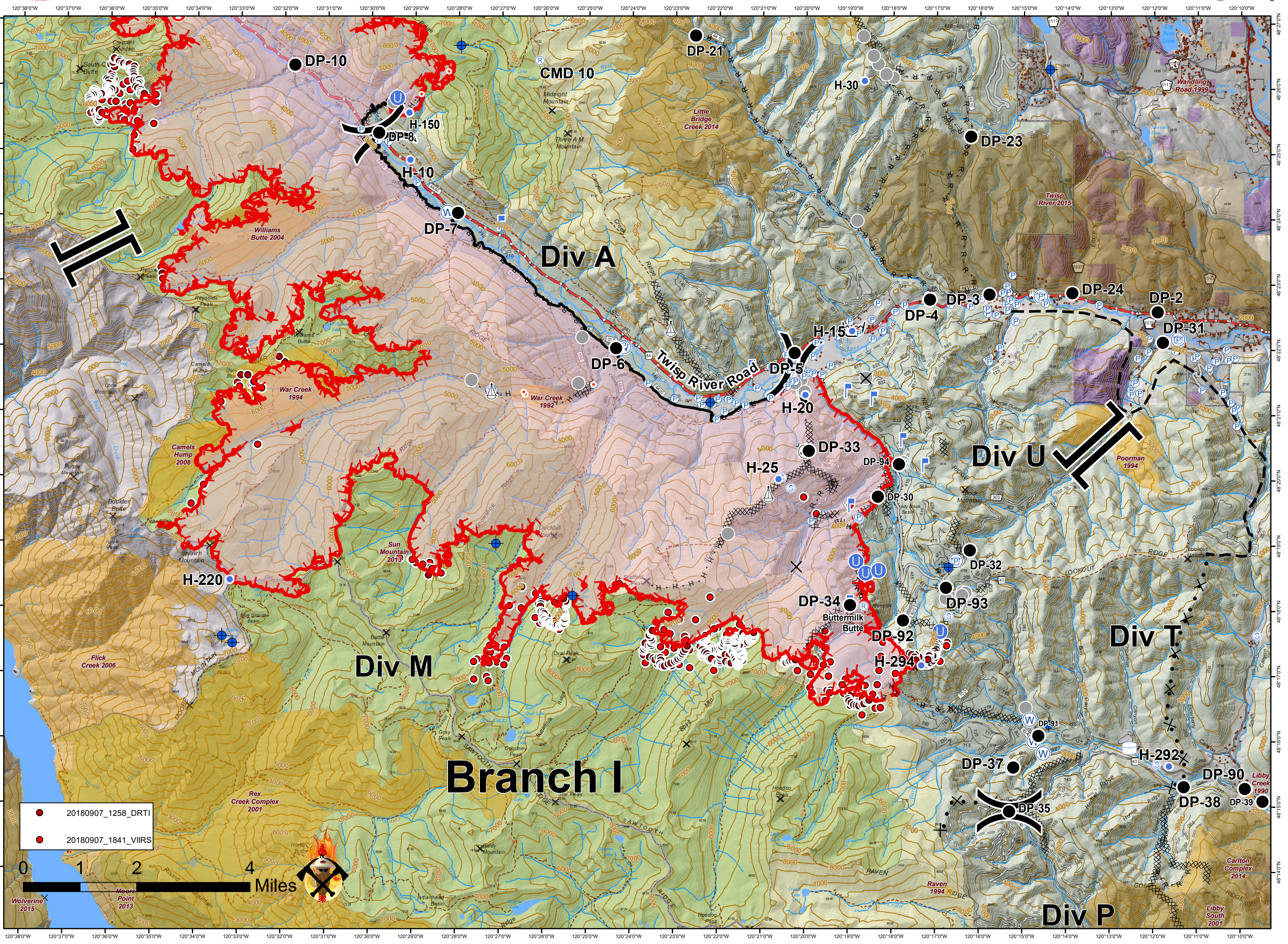


Div A/U Map

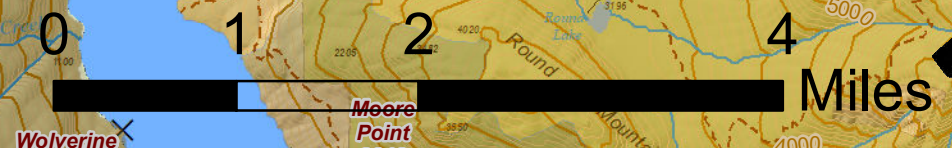
Crescent Mountain Fire WA-OWF-000428

09/08/2018

Approx Acreage: 49,277



- 20180907_1258_DRTI
- 20180907_1841_VIIRS



120°38'0"W 120°37'0"W 120°36'0"W 120°35'0"W 120°34'0"W 120°33'0"W 120°32'0"W 120°31'0"W 120°30'0"W 120°29'0"W 120°28'0"W 120°27'0"W 120°26'0"W 120°25'0"W 120°24'0"W 120°23'0"W 120°22'0"W 120°21'0"W 120°20'0"W 120°19'0"W 120°18'0"W 120°17'0"W 120°16'0"W 120°15'0"W 120°14'0"W 120°13'0"W 120°12'0"W 120°11'0"W 120°10'0"W