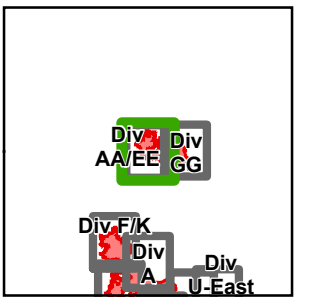




McLeod Fire

WA-OWF-000422



120°30'0"W

120°28'0"W

120°26'0"W

120°24'0"W

120°22'0"W

120°20'0"W

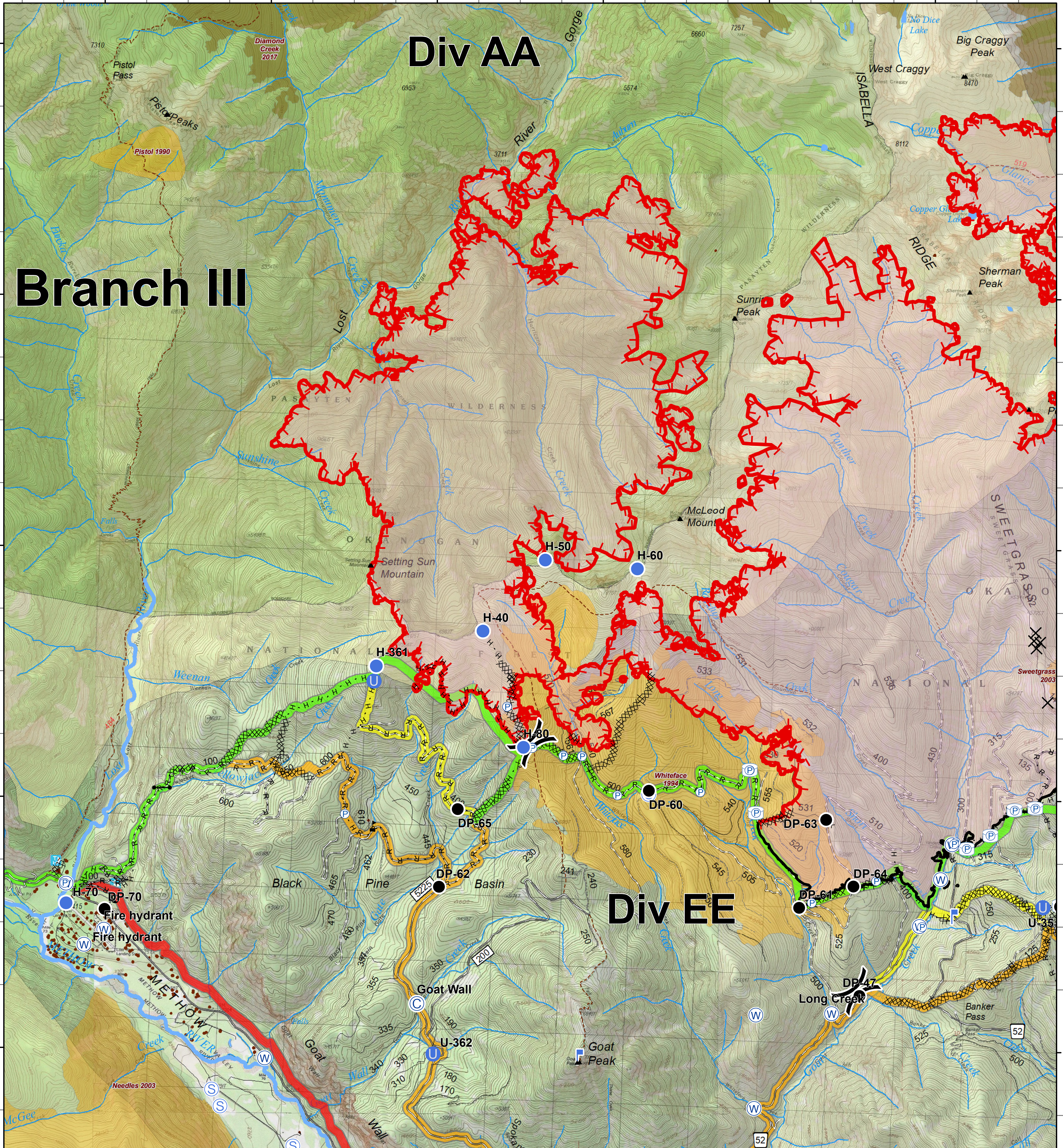
48°46'0"N
48°44'0"N
48°42'0"N
48°40'0"N
48°38'0"N

48°46'0"N
48°44'0"N
48°42'0"N
48°40'0"N
48°38'0"N

Div AA

Branch III

Div EE



- Camp
- Helispot
- Water Tank
- Value at Risk
- Division Break
- Uncontrolled Fire Edge
- Closure
- Lookout
- Drop Point
- Gate
- Unimproved Landing Area
- Pump
- Staging Area
- Water Source
- Completed Line
- Trail
- Structure
- Wildfire Daily Fire Perimeter
- PACE: primary
- PACE: alternate
- PACE: contingency
- PACE: emergency
- Completed Dozer Line
- Other County Roads
- City, Private Roads
- Gravel Road, Suitable for Passenger Car
- Road Not Suitable for Passenger Car
- Closed Road
- Existing "Unauthorized" Roads
- Decommissioned Roads

- FIREYEAR**
- 1990-1999
 - 2000-2009
 - 2015-2017
 - Roadless Conservation
 - Wilderness

- FS
- PVT
- WA Dept of F&W

