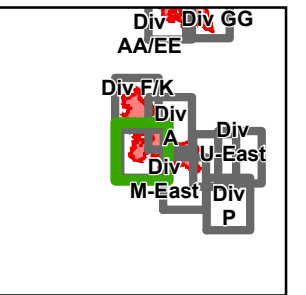


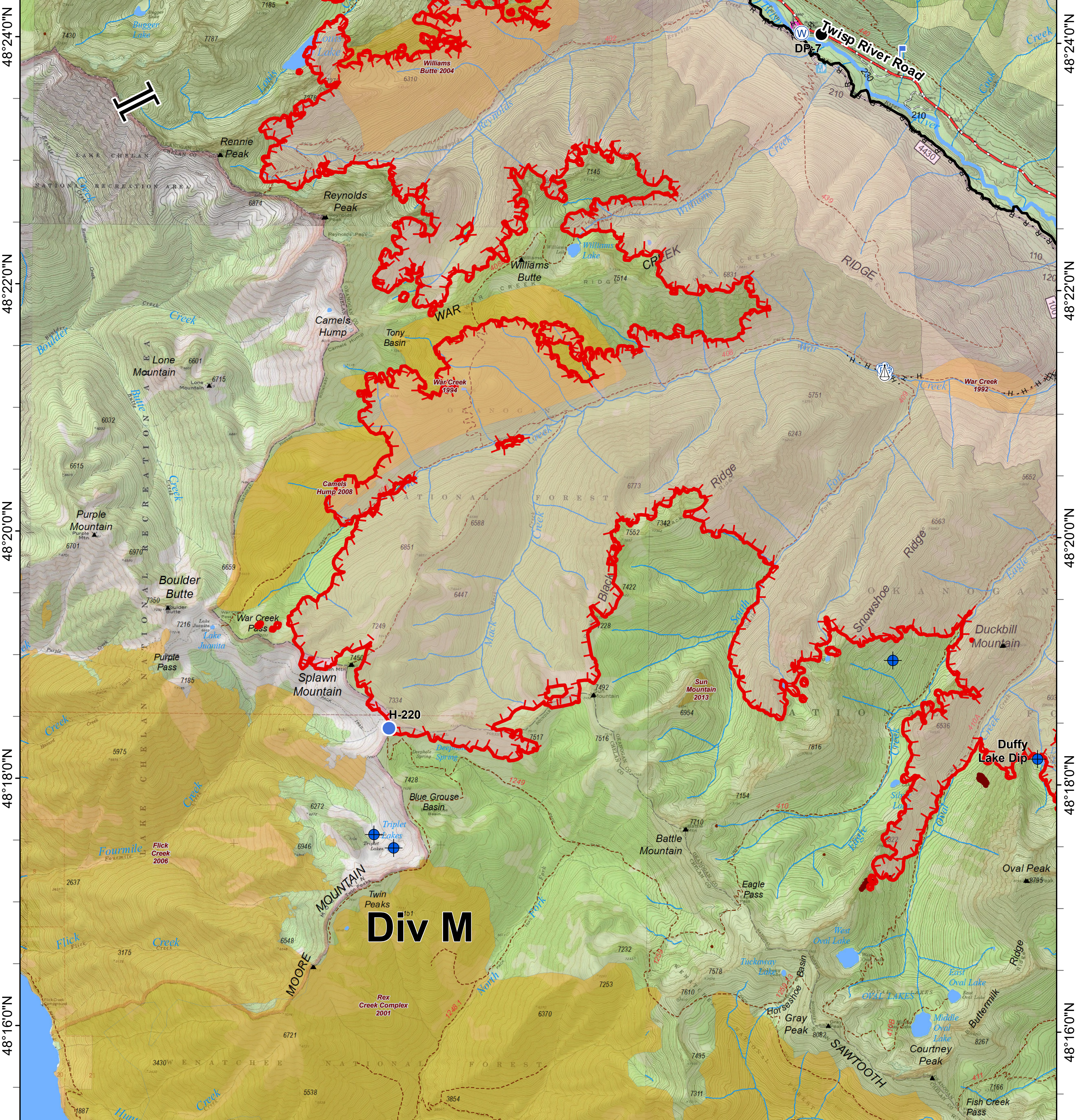


Crescent Mountain Fire

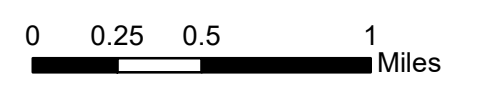
WA-OWF-000422



120°36'0"W 120°34'0"W 120°32'0"W 120°30'0"W 120°28'0"W 120°26'0"W



Div M



Dip Site	Lookout	Branch Break	Completed Line	Trail	Structure	FIREYEAR	FS
Drop Point	Pump	Completed Dozer Line	Twisp River Road	Wildfire Daily Fire Perimeter	1990-1999		NPS
Helispot	Sling Site	H - H Completed Hand Line	Paved Road	Gravel Road, Suitable for Passenger Car	2000-2009	PVT	
Water Source	Uncontrolled Fire Edge	R - R Road as Completed Line	Dirt Road, Suitable for Passenger Car	Road Not Suitable for Passenger Car	Roadless Conservation		
			Closed Road	Existing "Unauthorized" Roads	Wilderness		
			Decommissioned Roads				

