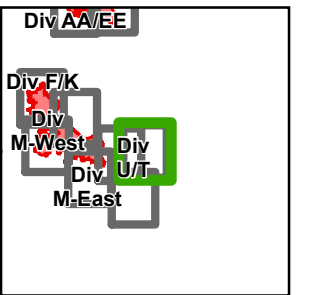


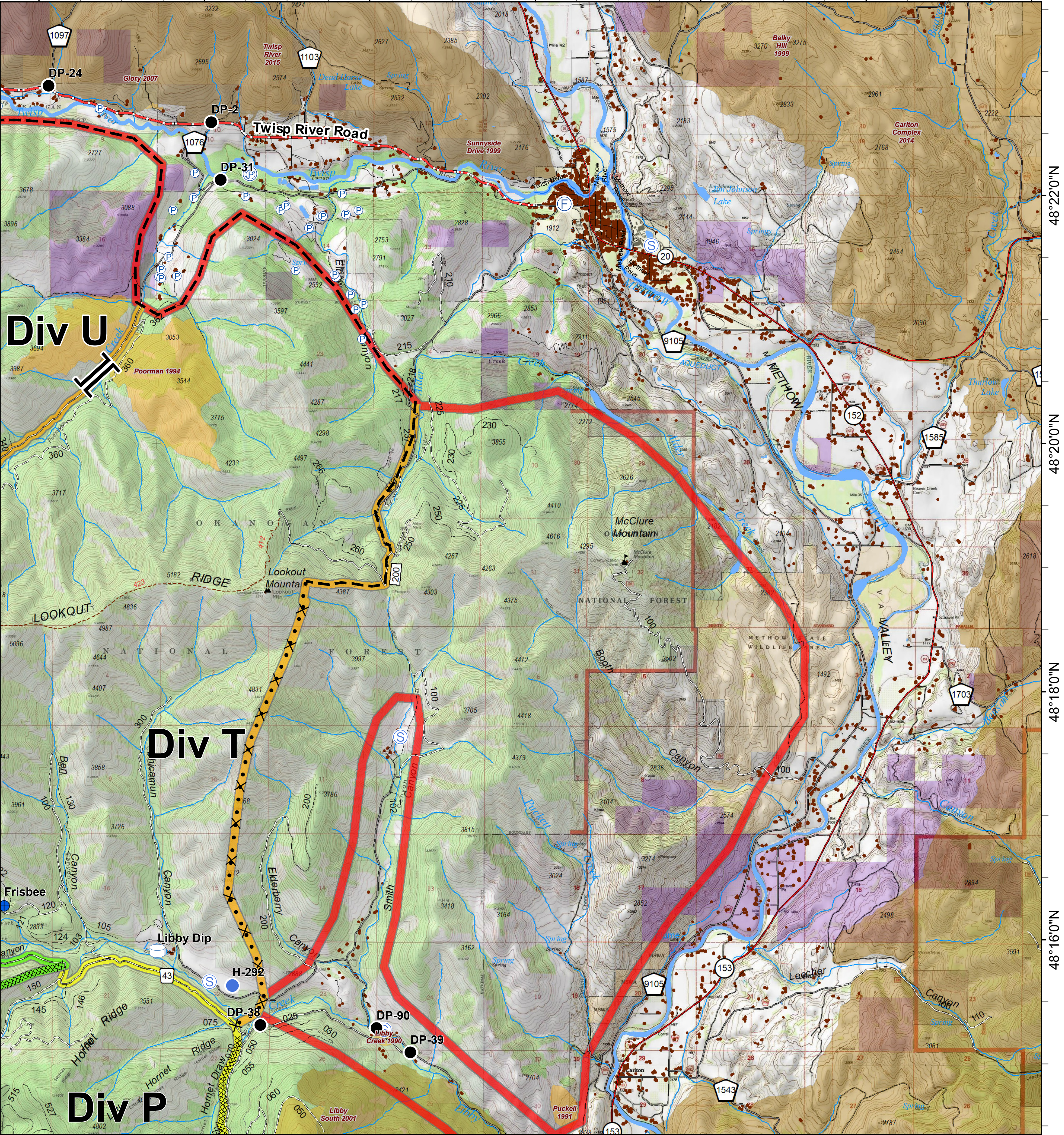


Crescent Mountain Fire

WA-OWF-000422



120°14'0"W 120°12'0"W 120°10'0"W 120°8'0"W 120°6'0"W 120°4'0"W 120°2'0"W



- Dip Site
- Drop Point
- Fire Station
- Helispot
- Pump
- Staging Area
- Water Source
- Water Tank
- Value at Risk
- Branch Break
- Proposed Dozer Line
- Planned Fire Line
- Completed Dozer Line
- Trail
- Twisp River Road
- Highway
- County Roads
- Other County Roads
- City, Private Roads
- Private/Other Roads
- Paved Road
- Gravel Road, Suitable for Passenger Car
- Dirt Road, Suitable for Passenger Car
- Road Not Suitable for Passenger Car
- Closed Road
- Existing "Unauthorized" Roads

- Structure
- PACE: primary
- PACE: alternate
- PACE: contingency
- PACE: emergency
- FIREYEAR**
- 1990-1999
- 2000-2009
- 2010-2014
- 2015-2017
- FS
- PVT
- WA Dept of F&W
- Washington DNR

0 0.25 0.5 1 Miles

