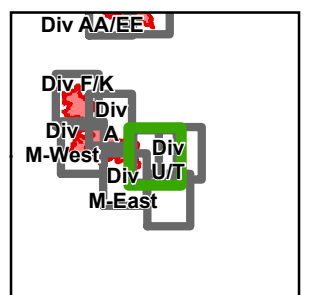


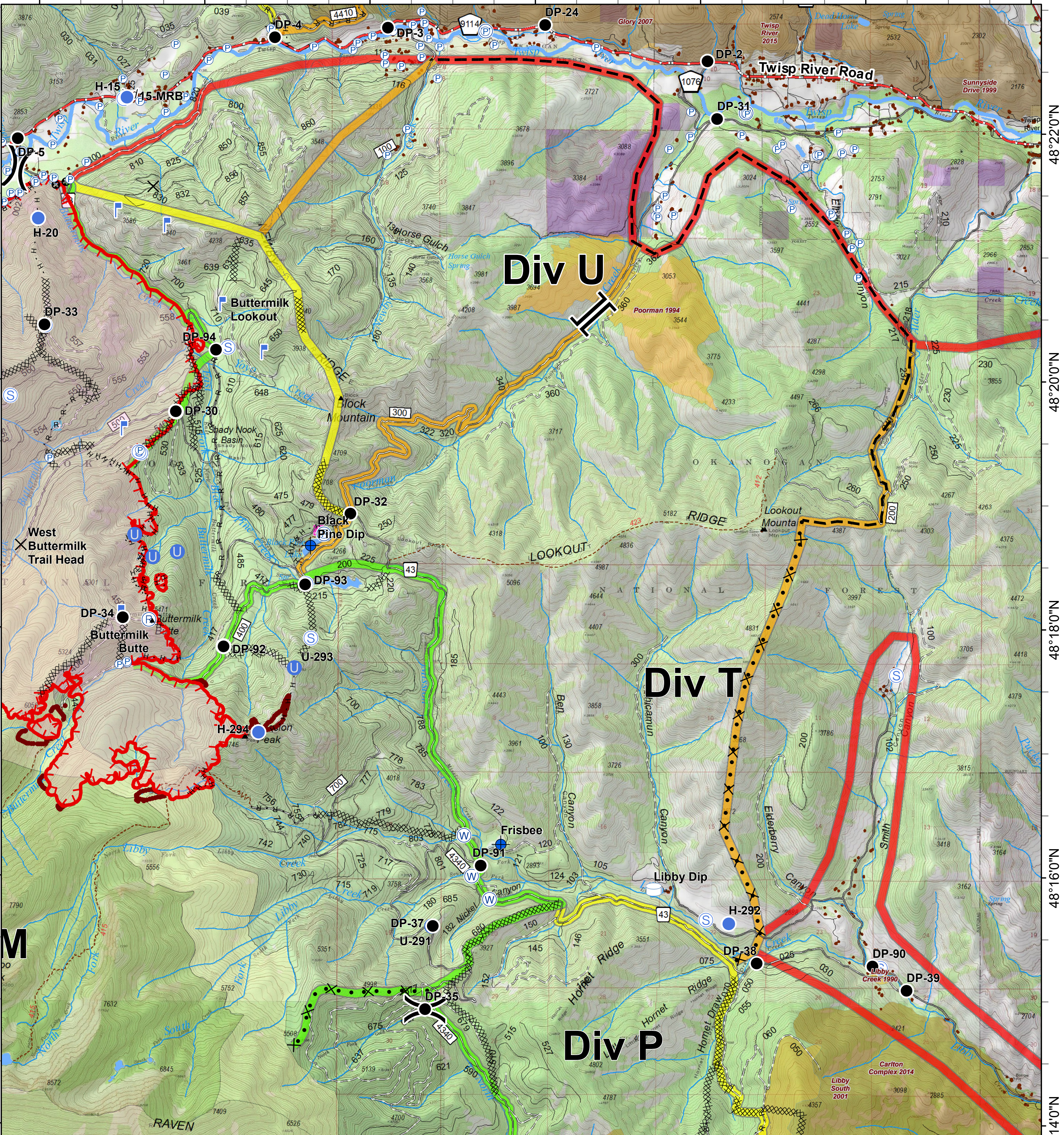


Crescent Mountain Fire

WA-OWF-000422



120°20'0"W 120°18'0"W 120°16'0"W 120°14'0"W 120°12'0"W 120°10'0"W 120°8'0"W



<ul style="list-style-type: none"> X Closure ● Dip Site ● Drop Point ● Unimproved Landing Area ● Helispot ■ Lookout 	<ul style="list-style-type: none"> Ⓟ Pump Ⓡ Repeater Ⓜ Retardant/Mud Pit Ⓢ Staging Area Ⓦ Water Source Ⓣ Water Tank 	<ul style="list-style-type: none"> ⎓ Division Break ⎓ Branch Break ⊗ H - H Completed Hand Line ⊗ R - R Road as Completed Line ⊗ Proposed Dozer Line ⊗ Planned Fire Line ⊗ Other 	<ul style="list-style-type: none"> ⊗ Completed Dozer Line ⊗ Trail ⊗ Twisp River Road ⊗ Highway ⊗ County Roads ⊗ Other County Roads ⊗ City, Private Roads ⊗ Paved Road ⊗ Gravel Road, Suitable for Passenger Car ⊗ Dirt Road, Suitable for Passenger Car ⊗ Road Not Suitable for Passenger Car ⊗ Closed Road ⊗ Existing "Unauthorized" Roads ⊗ Decommissioned Roads 	<ul style="list-style-type: none"> ■ Structure ■ Wildfire Daily Fire Perimeter ■ PACE: primary ■ PACE: alternate ■ PACE: contingency ■ PACE: emergency 	<ul style="list-style-type: none"> ■ FIREYEAR ■ 1990-1999 ■ 2000-2009 ■ 2010-2014 ■ 2015-2017 ■ Roadless Conservation ■ Wilderness 	<ul style="list-style-type: none"> ■ FS ■ PVT ■ WA Dept of F&W ■ Washington DNR
---	---	--	--	--	---	---

0 0.25 0.5 1 Miles

