

**Crescent Mountain  
WA-OWF-000428  
09/08/2018 Day**

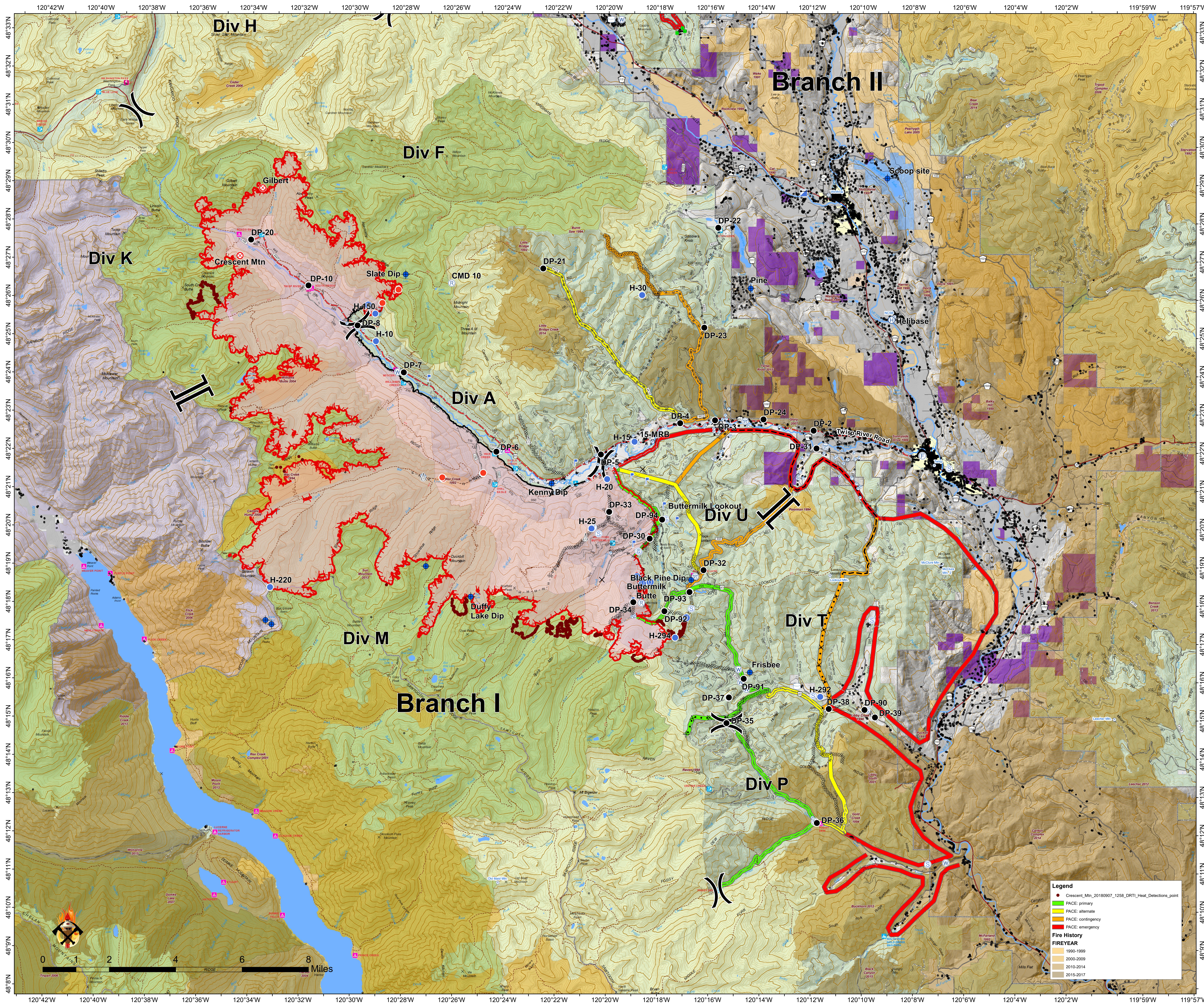


**Operations  
Map**  
Approx Acreage:  
**49,577**

- ⊙ Camp
- ✕ Closure
- ⬇ Dip Site
- Drop Point
- ⊗ Fire Origin
- ⊙ Fire Station
- ⌄ Gate
- ⊙ Helibase
- ⊙ Unimproved Landing Area
- Helispot
- Hot Spot
- ⊙ Incident Command Post
- ⊙ Landmark
- ⊙ Lookout
- ⊙ Pump
- ⊙ Repeater
- ⊙ Retardant/Mud Pit
- ⊙ Sling Site
- ⊙ Staging Area
- ⊙ Water Source
- ⊙ Water Tank
- ⊙ Value at Risk
- ⌄ Division Break
- ⌄ Branch Break

- ⬜ Wildfire Daily Fire Perimeter
- ⬜ Structure
- ⬜ Town
- ⬜ Ranger District
- ⬜ Roadless Conservation
- ⬜ Wilderness
- Owner**
- FS
- NPS
- PVT
- USFWS
- State Owned and Managed Lands**
- MANAGER**
- City or Municipality
- WA Dept of F&W
- WA State Parks
- Washington DNR

- Legend**
- Crescent\_Mtn\_20180907\_1258\_DRTI\_Heat\_Detections\_point
  - ▬ PACE: primary
  - ▬ PACE: alternate
  - ▬ PACE: contingency
  - ▬ PACE: emergency
  - Fire History**
  - 1990-1999
  - 2000-2009
  - 2010-2014
  - 2015-2017



Crescent Mountain OPS  
Avenida Map QR Code