

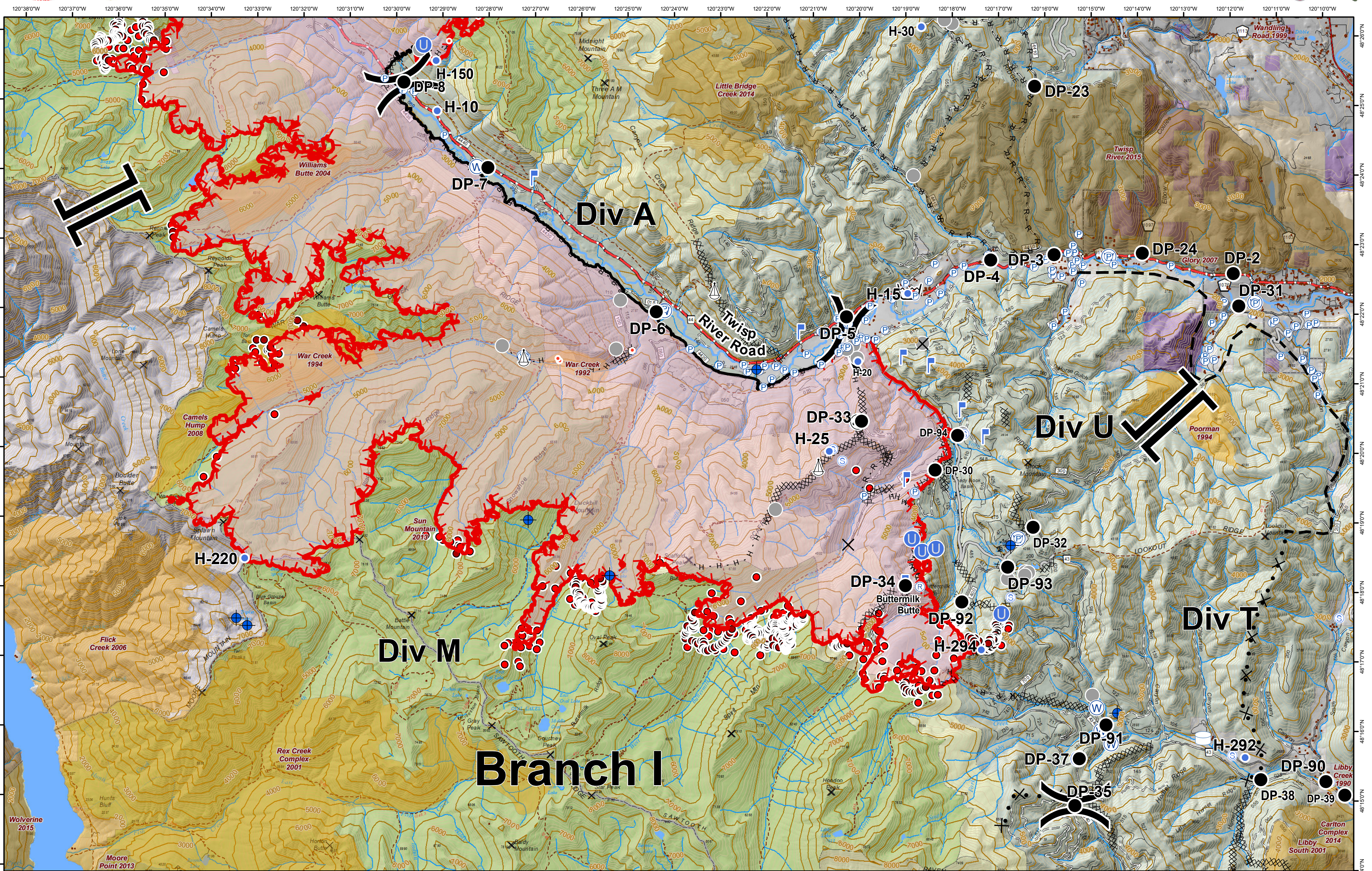


Div A/U Map

Crescent Mountain Fire WA-OWF-000428

09/08/2018

Approx Acreage: 49,577



- Crescent_Mtn_20180907_1258_DRT1_Heat_Detections_point
- 20180907_1841_VIIRS
- ✕ MountainPeak
- ✕ Closure
- Dip Site
- Drop Point
- U Unimproved Landing Area
- Helispot
- Hot Spot
- Internet Access
- Lookout
- Pump
- Repeater
- Retardant/Mud Pit
- ⚓ Sling Site
- Ⓢ Staging Area
- W Water Source
- Water Tank
- Other
- Division Break
- Branch Break
- Uncontrolled Fire Edge
- Completed Line
- Completed Dozer Line
- H - Completed Hand Line
- R - Road as Completed Line
- Access or Improved Road
- Proposed Dozer Line
- Planned Fire Line
- Aerial Retardant Drop
- Air Tanker Retardant
- Other
- Trail
- Twisp River Road
- Highway
- County Roads
- Other County Road
- City, Private Roads
- Paved Road

- Structure
- Waterbody_Clip
- Stream/Gradient
- Ranger/District
- Roadless Conservation
- Wilderness
- Owner
- FS
- NPS
- PVT
- USFWS
- WA Dept of F&W
- Washington DNR
- Fire History
- 1990-1999
- 2000-2009
- 2010-2014
- 2015-2017

