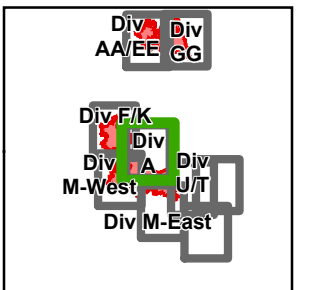




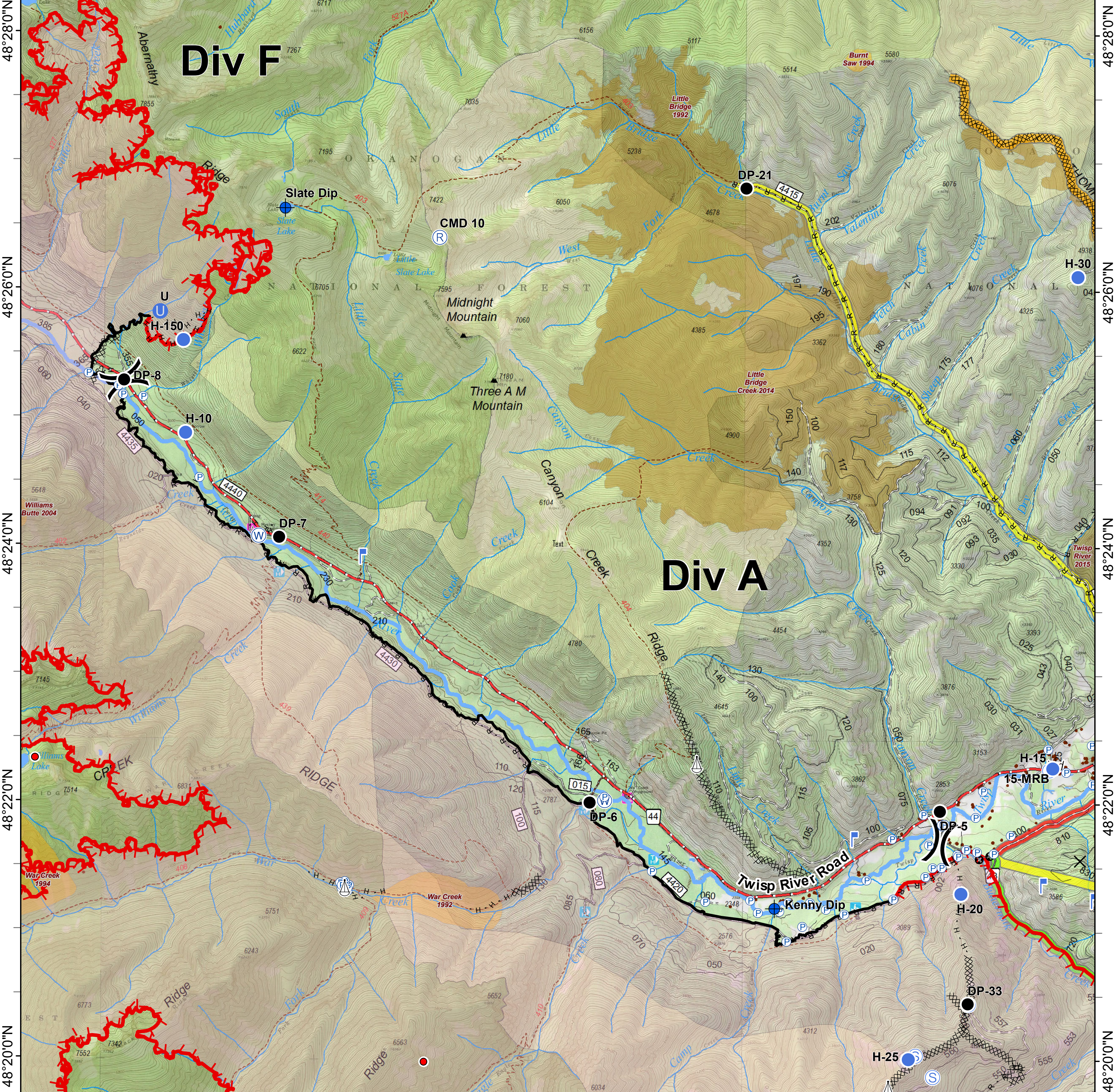
# Crescent Mountain Fire

WA-OWF-000422

Approx Acreage:  
Crescent 49,577 McLeod 22,661



120°30'0"W      120°28'0"W      120°26'0"W      120°24'0"W      120°22'0"W      120°20'0"W



<ul style="list-style-type: none"> <li> Closure</li> <li> Dip Site</li> <li> Drop Point</li> <li> Unimproved Landing Area</li> <li> Helispot</li> </ul>	<ul style="list-style-type: none"> <li> Lookout</li> <li> Pump</li> <li> Repeater</li> <li> Retardant/Mud Pit</li> <li> Sling Site</li> </ul>	<ul style="list-style-type: none"> <li> Staging Area</li> <li> Water Source</li> <li> Division Break</li> <li> Uncontrolled Fire Edge</li> </ul>	<ul style="list-style-type: none"> <li> Completed Line</li> <li> Completed Dozer Line</li> <li> H - H Completed Hand Line</li> <li> R - R Road as Completed Line</li> <li> Other</li> </ul>	<ul style="list-style-type: none"> <li> Trail</li> <li> Twisp River Road</li> <li> County Roads</li> <li> Other County Roads</li> <li> City, Private Roads</li> <li> Paved Road</li> <li> Gravel Road, Suitable for Passenger Car</li> <li> Dirt Road, Suitable for Passenger Car</li> <li> Road Not Suitable for Passenger Car</li> <li> Closed Road</li> <li> Existing "Unauthorized" Roads</li> <li> Decommissioned Roads</li> </ul>	<ul style="list-style-type: none"> <li> Structure</li> <li> Wildfire Daily Fire Perimeter</li> <li> PACE: primary</li> <li> PACE: alternate</li> <li> PACE: contingency</li> <li> PACE: emergency</li> </ul>	<p><b>FIREYEAR</b></p> <ul style="list-style-type: none"> <li> 1990-1999</li> <li> 2000-2009</li> <li> 2010-2014</li> <li> 2015-2017</li> <li> Roadless Conservation</li> <li> Wilderness</li> </ul>	<ul style="list-style-type: none"> <li> FS</li> <li> PVT</li> </ul>	<p>0 0.25 0.5 1 Miles</p>
---	---	--	---	---	--	--	---	---------------------------