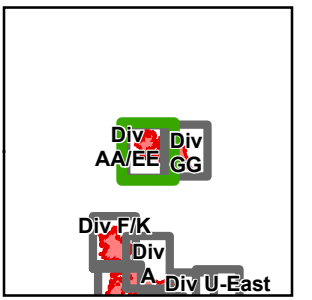




McLeod Fire

WA-OWF-000422

Approx Acreage:
Crescent 49,577 McLeod 22,661



120°30'0"W

120°28'0"W

120°26'0"W

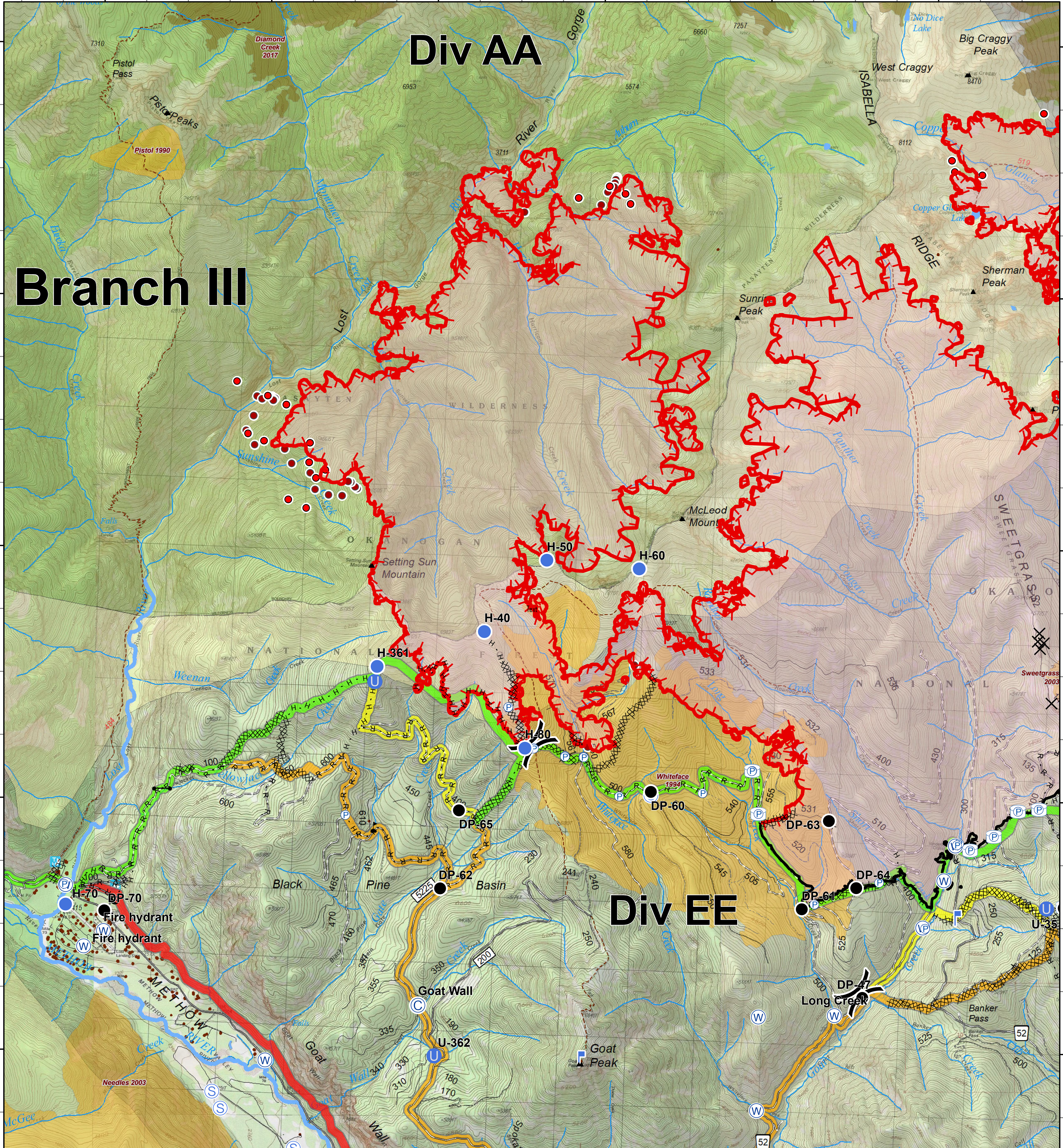
120°24'0"W

120°22'0"W

120°20'0"W

48°46'0"N
48°44'0"N
48°42'0"N
48°40'0"N
48°38'0"N

48°46'0"N
48°44'0"N
48°42'0"N
48°40'0"N
48°38'0"N



Camp	Helispot	Water Tank	Completed Line	Trail	Structure	FIREYEAR	FS
Closure	Lookout	Value at Risk	Completed Dozer Line	County Roads	Wildfire Daily Fire Perimeter		1990-1999
Drop Point	Pump	Division Break	H - H Completed Hand Line	Other County Roads	PACE: primary	2000-2009	WA Dept of F&W
Gate	Staging Area		City, Private Roads	Gravel Road, Suitable for Passenger Car	PACE: alternate	2015-2017	
Unimproved Landing Area	Water Source		R - R Road as Completed Line	Road Not Suitable for Passenger Car	PACE: contingency	Roadless Conservation	
			Other	Closed Road	PACE: emergency	Wilderness	
			Uncontrolled Fire Edge	Existing "Unauthorized" Roads			
				Decommissioned Roads			

