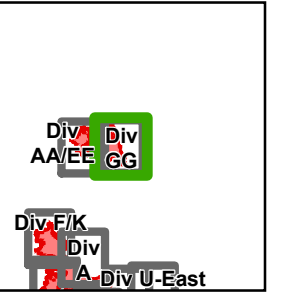




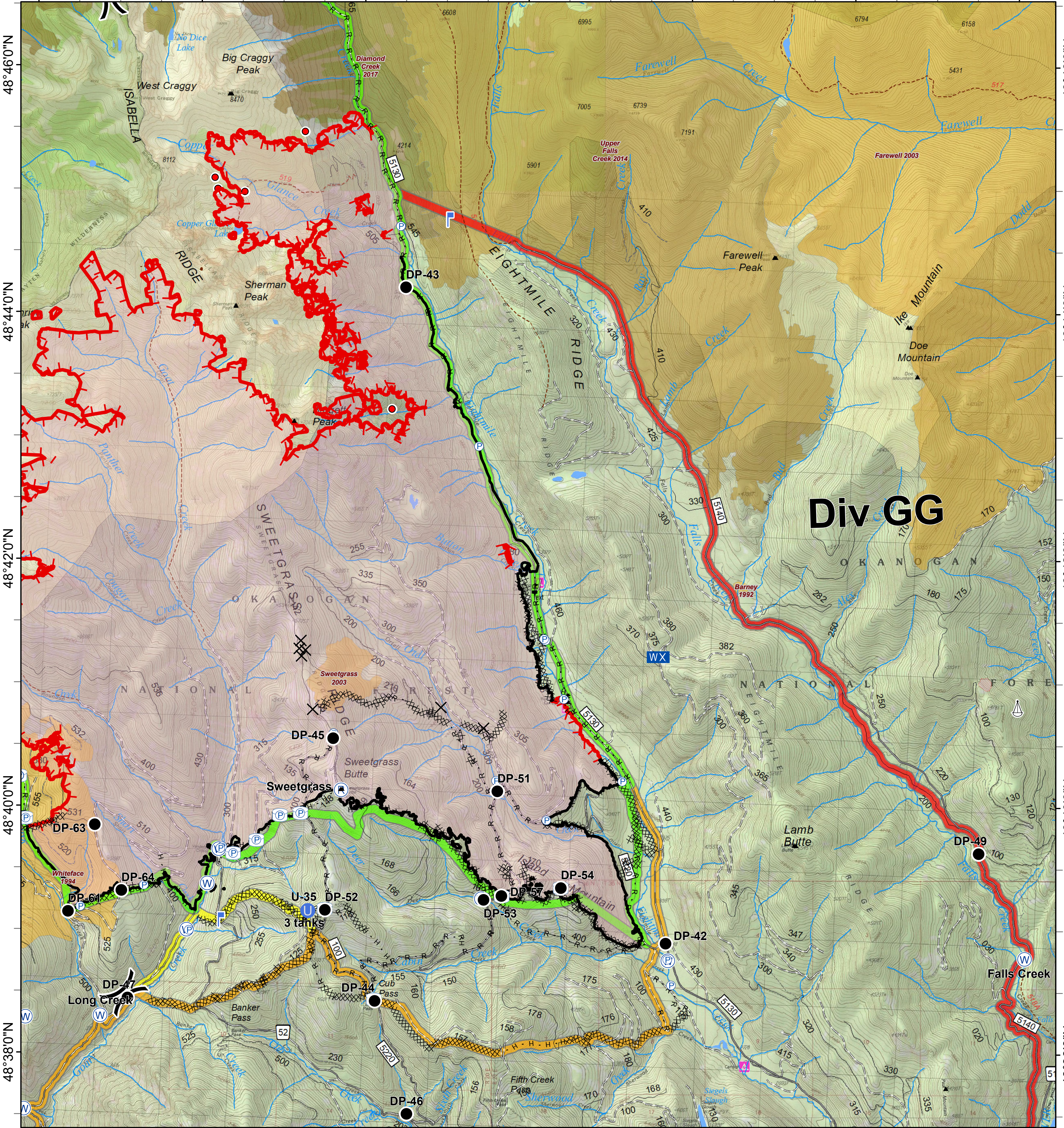
# McLeod Fire

WA-OWF-000422

Approx Acreage:  
Crescent 49,577 McLeod 22,661



120°22'0"W 120°20'0"W 120°18'0"W 120°16'0"W 120°14'0"W 120°12'0"W 120°10'0"W



Div GG

0 0.25 0.5 1 Miles

- |   |  |   |   |   |  |  |   |
|---|--|---|---|---|--|--|---|
| <ul style="list-style-type: none"> <li>X Closure</li> <li>● Drop Point</li> <li>U Unimproved Landing Area</li> <li>! Lookout</li> <li>WX Mobile Weather Unit</li> </ul> | <ul style="list-style-type: none"> <li>P Pump</li> <li>R Repeater</li> <li>W Water Source</li> <li>Water Tank</li> </ul> | <ul style="list-style-type: none"> <li>▲ Value at Risk</li> <li>Division Break</li> <li>Uncontrolled Fire Edge</li> </ul> | <ul style="list-style-type: none"> <li>Completed Line</li> <li>Completed Dozer Line</li> <li>H · H Completed Hand Line</li> <li>R · R Road as Completed Line</li> <li>Closed Road</li> <li>Existing "Unauthorized" Roads</li> <li>Decommissioned Roads</li> </ul> | <ul style="list-style-type: none"> <li>Trail</li> <li>City, Private Roads</li> <li>Paved Road</li> <li>Gravel Road, Suitable for Passenger Car</li> <li>Dirt Road, Suitable for Passenger Car</li> <li>Road Not Suitable for Passenger Car</li> </ul> | <ul style="list-style-type: none"> <li>Structure</li> <li>Wildfire Daily Fire Perimeter</li> <li>PACE: primary</li> <li>PACE: alternate</li> <li>PACE: contingency</li> <li>PACE: emergency</li> </ul> | <p><b>FIREYEAR</b></p> <ul style="list-style-type: none"> <li>1990-1999</li> <li>2000-2009</li> <li>2010-2014</li> <li>2015-2017</li> <li>Roadless Conservation</li> <li>Wilderness</li> </ul> | <ul style="list-style-type: none"> <li>FS</li> <li>USFWS</li> <li>WA Dept of F&amp;W</li> </ul> |
|---|--|---|---|---|--|--|---|

