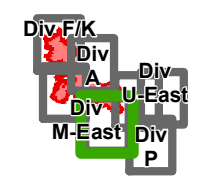




Crescent Mountain Fire

WA-OWF-000422

Approx Acreage:
Crescent 49,577 McLeod 22,661



120°26'0"W

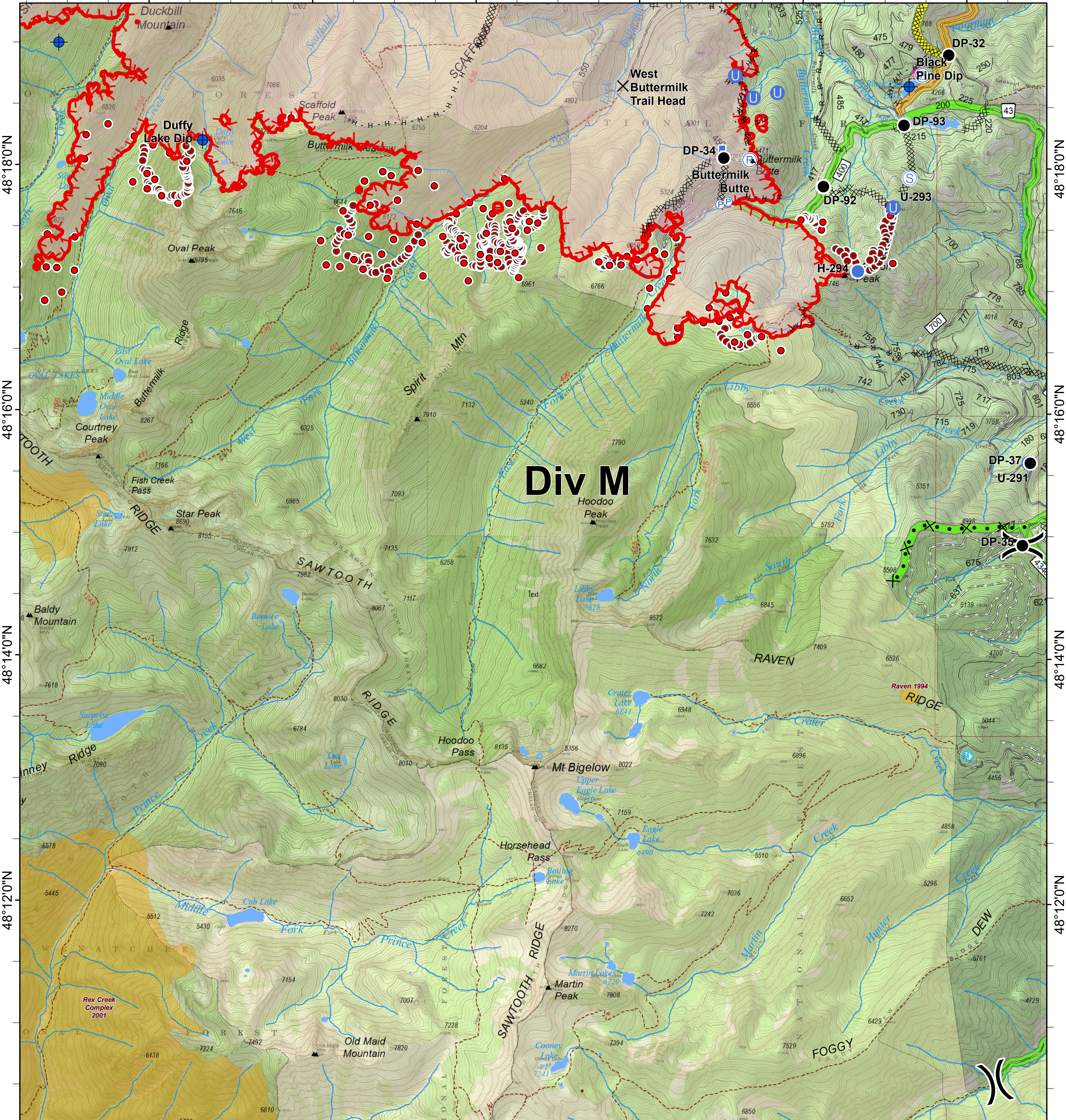
120°24'0"W

120°22'0"W

120°20'0"W

120°18'0"W

120°16'0"W



0 0.25 0.5 1 Miles

- | | | | | | | | |
|--|--|---|--|---|--|--|---|
| <ul style="list-style-type: none"> Closure Dip Site Drop Point Unimproved Landing Area | <ul style="list-style-type: none"> Helispot Lookout Pump Repeater Staging Area | <ul style="list-style-type: none"> Water Source Division Break Uncontrolled Fire Edge | <ul style="list-style-type: none"> Completed Dozer Line Completed Hand Line Road as Completed Line Proposed Dozer Line | <ul style="list-style-type: none"> Trail City, Private Roads Gravel Road, Suitable for Passenger Car Dirt Road, Suitable for Passenger Car Road Not Suitable for Passenger Car Closed Road Existing "Unauthorized" Roads Decommissioned Roads | <ul style="list-style-type: none"> Structure Wildfire Daily Fire Perimeter PACE: primary PACE: alternate PACE: contingency | <p>FIREYEAR</p> <ul style="list-style-type: none"> 1990-1999 2000-2009 Roadless Conservation Wilderness | <ul style="list-style-type: none"> FS |
|--|--|---|--|---|--|--|---|

