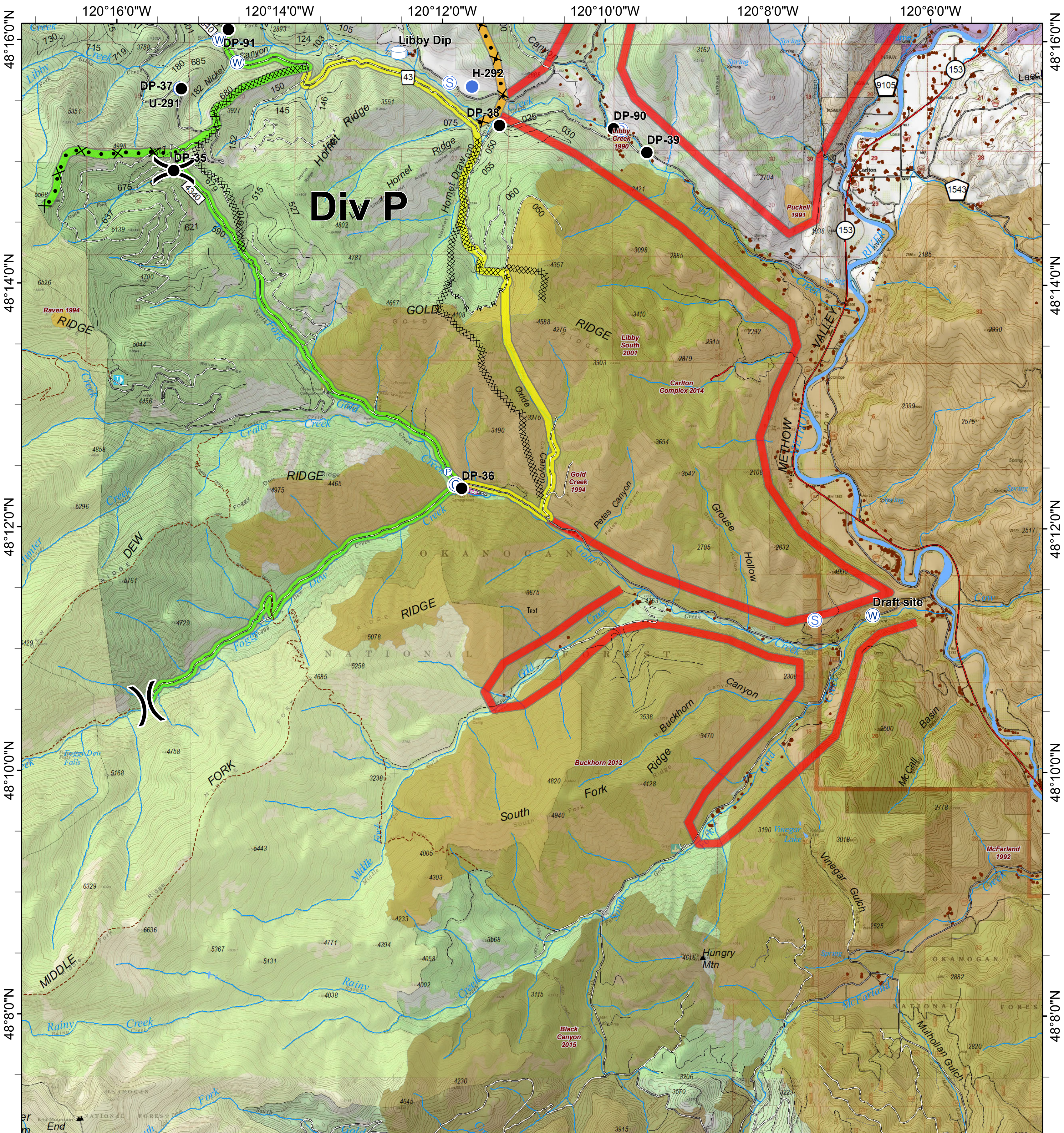
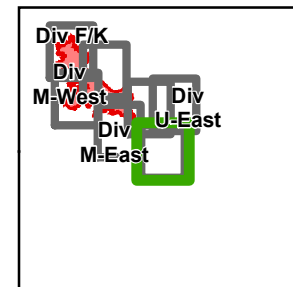




Crescent Mountain Fire

WA-OWF-000422

Approx Acreage:
Crescent 49,577 McLeod 22,661



- Camp
- Drop Point
- Unimproved Landing Area
- Helispot

- Pump
- Staging Area
- Water Source
- Water Tank

- Division Break
- Proposed Dozer Line
- Completed Dozer Line

- R - R Road as Completed Line
- Highway
- County Roads
- Other County Roads
- City, Private Roads
- Paved Road
- Gravel Road, Suitable for Passenger Car
- Dirt Road, Suitable for Passenger Car
- Road Not Suitable for Passenger Car
- Closed Road
- Existing "Unauthorized" Roads
- Decommissioned Roads

- Structure
- PACE: primary
- PACE: alternate
- PACE: contingency
- PACE: emergency

- FIREYEAR**
- 1990-1999
 - 2000-2009
 - 2010-2014
 - 2015-2017
 - Roadless Conservation

- FS
- PVT
- WA Dept of F&W
- Washington DNR

0 0.25 0.5 1 Miles

