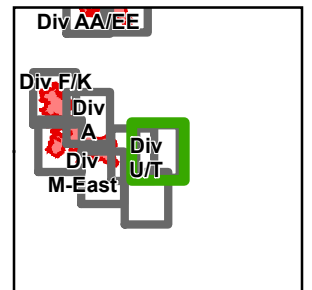




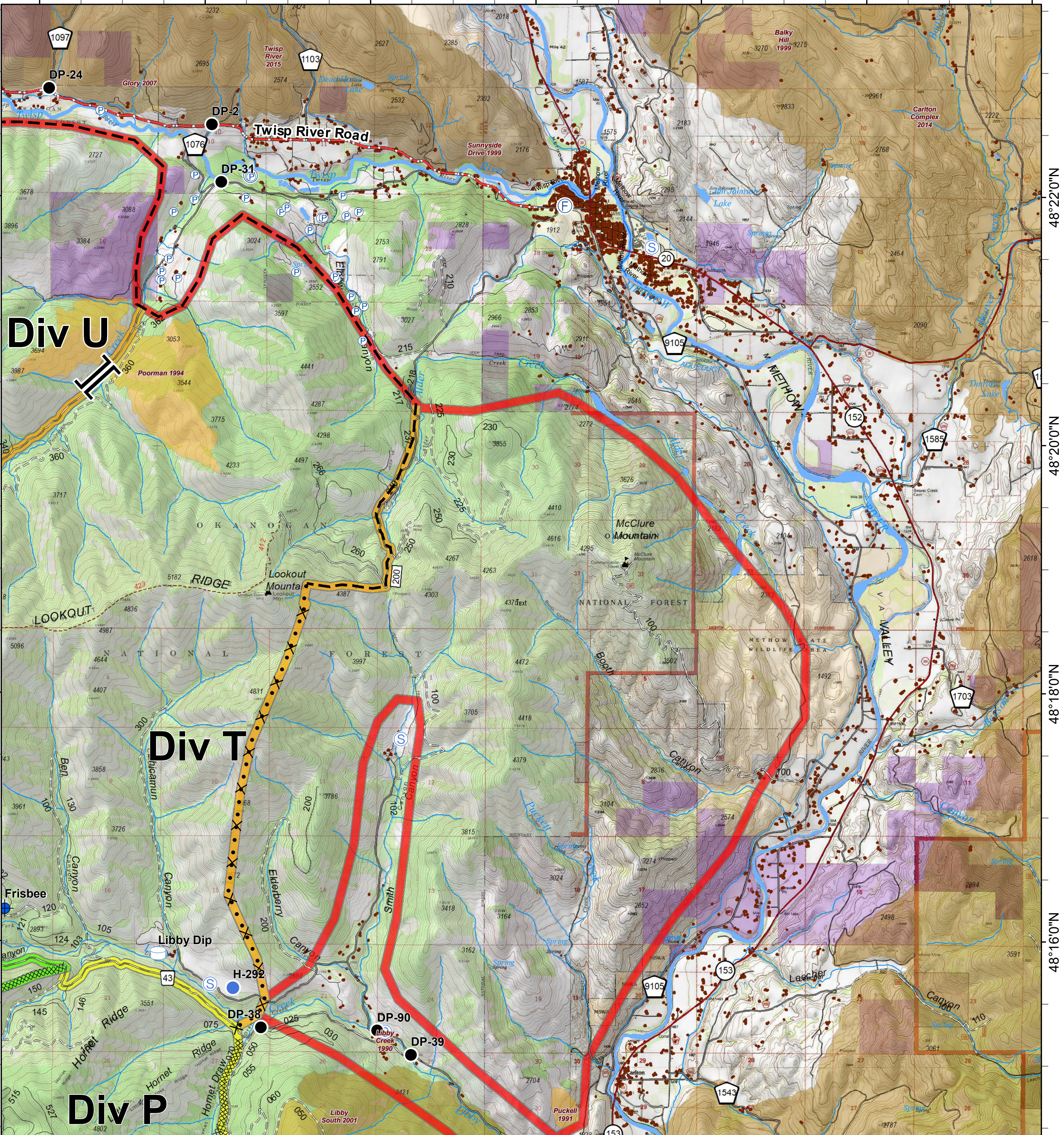
# Crescent Mountain Fire

WA-OWF-000422

Approx Acreage:  
Crescent 49,577 McLeod 22,661



120°14'0"W 120°12'0"W 120°10'0"W 120°8'0"W 120°6'0"W 120°4'0"W 120°2'0"W



Dip Site	Pump	Branch Break	Proposed Dozer Line	Trail	Structure	<b>FIREYEAR</b>	FS
Drop Point	Staging Area	Water Source	Planned Fire Line	Twisp River Road	PACE: primary	1990-1999	PVT
Fire Station	Water Tank	Value at Risk	Highway	County Roads	PACE: alternate	2000-2009	WA Dept of F&W
Helispot	Completed Dozer Line		Other County Roads	City, Private Roads	PACE: contingency	2010-2014	Washington DNR
			Private/Other Roads	Paved Road	PACE: emergency	2015-2017	
			Gravel Road, Suitable for Passenger Car	Dirt Road, Suitable for Passenger Car			
			Road Not Suitable for Passenger Car	Closed Road			
			Existing "Unauthorized" Roads				

