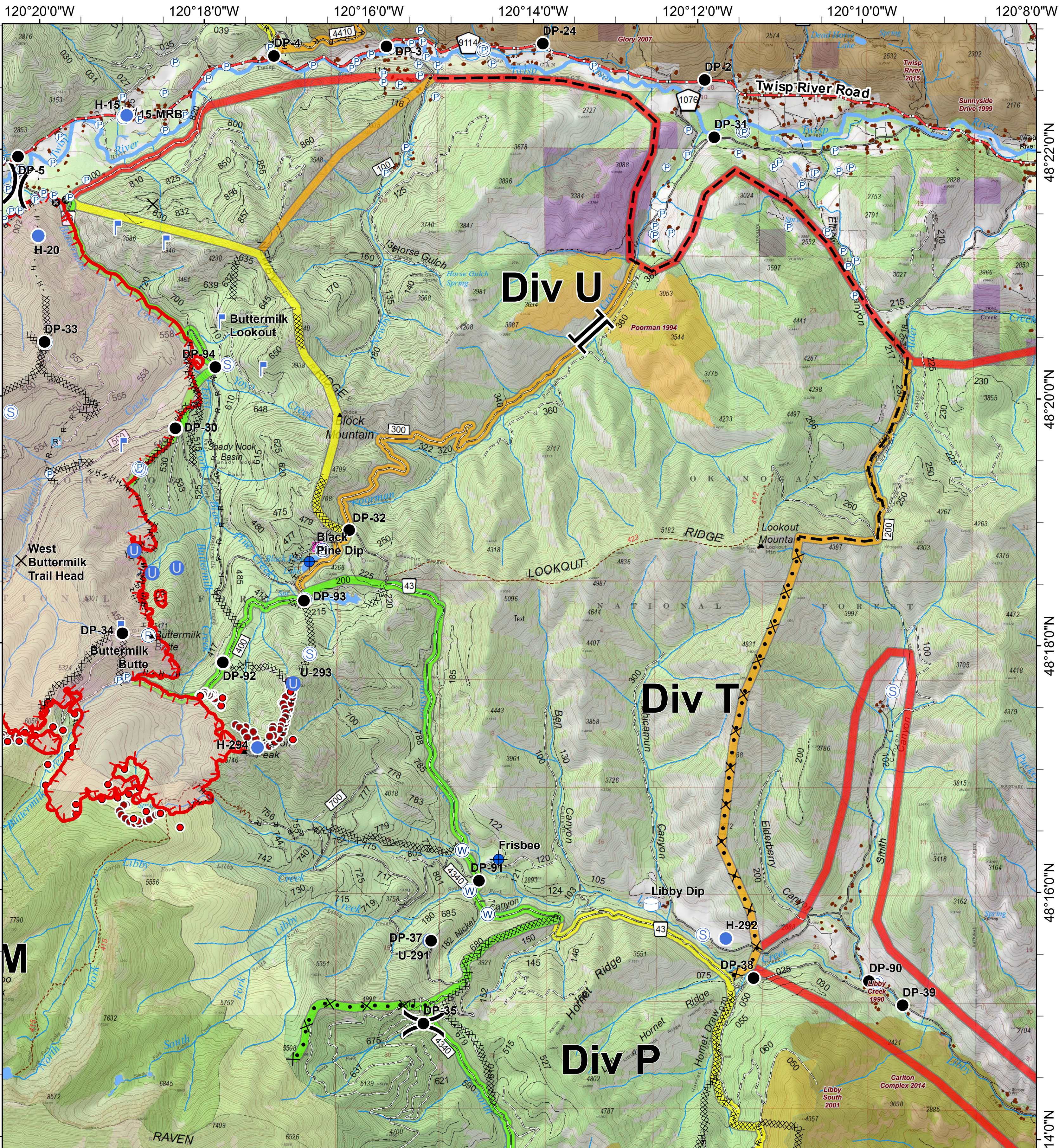
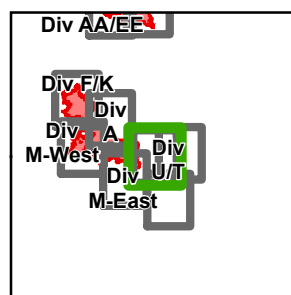




# Crescent Mountain Fire

WA-OWF-000422

Approx Acreage:  
Crescent 49,577 McLeod 22,661



- Closure
- Dip Site
- Drop Point
- Unimproved Landing Area
- Helispot
- Lookout
- Pump
- Repeater
- Retardant/Mud Pit
- Staging Area
- Water Source
- Water Tank
- Division Break
- Branch Break
- Uncontrolled Fire Edge

- Completed Dozer Line
- H - H Completed Hand Line
- R - R Road as Completed Line
- Proposed Dozer Line
- Planned Fire Line
- Other
- Trail
- Twisp River Road
- Highway
- County Roads
- Other County Roads
- City, Private Roads
- Paved Road
- Gravel Road, Suitable for Passenger Car
- Dirt Road, Suitable for Passenger Car
- Road Not Suitable for Passenger Car
- Closed Road
- Existing "Unauthorized" Roads
- Decommissioned Roads

- Structure
- Wildfire Daily Fire Perimeter
- PACE: primary
- PACE: alternate
- PACE: contingency
- PACE: emergency

- FIREYEAR**
- 1990-1999
  - 2000-2009
  - 2010-2014
  - 2015-2017
  - Roadless Conservation
  - Wilderness

- FS
- PVT
- WA Dept of F&W
- Washington DNR

