

**Crescent Mountain  
WA-OWF-000428  
09/08/2018 Day**

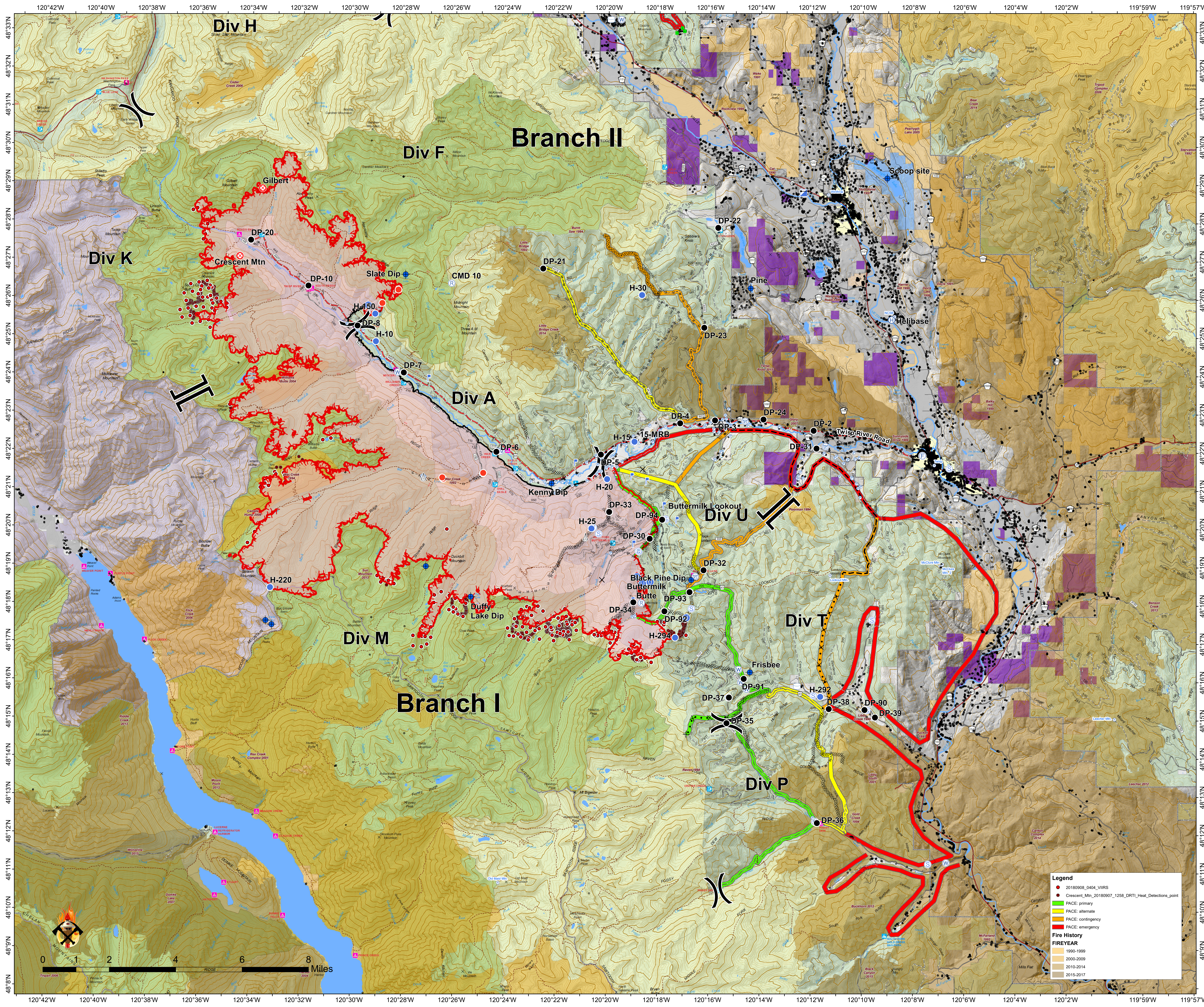


**Operations  
Map**  
Approx Acreage:  
**49,577**

- Camp
- Closure
- Dip Site
- Drop Point
- Fire Origin
- Fire Station
- Gate
- Helibase
- Unimproved Landing Area
- Helispot
- Hot Spot
- Incident Command Post
- Landmark
- Lookout
- Pump
- Repeater
- Retardant/Mud Pit
- Sling Site
- Staging Area
- Water Source
- Water Tank
- Value at Risk
- Division Break
- Branch Break

- Wildfire Daily Fire Perimeter
- Structure
- Town
- Ranger District
- Roadless Conservation
- Wilderness
- Owner**
- FS
- NPS
- PVT
- USFWS
- State Owned and Managed Lands**
- MANAGER**
- City or Municipality
- WA Dept of F&W
- WA State Parks
- Washington DNR

- Legend**
- 20180908\_0404\_VIIRS
  - Crescent\_Mtn\_20180907\_1258\_DRTI\_Heat\_Detections\_point
  - PACE: primary
  - PACE: alternate
  - PACE: contingency
  - PACE: emergency
- Fire History**
- 1990-1999
  - 2000-2009
  - 2010-2014
  - 2015-2017



Crescent Mountain OPS  
Avenida Map QR Code