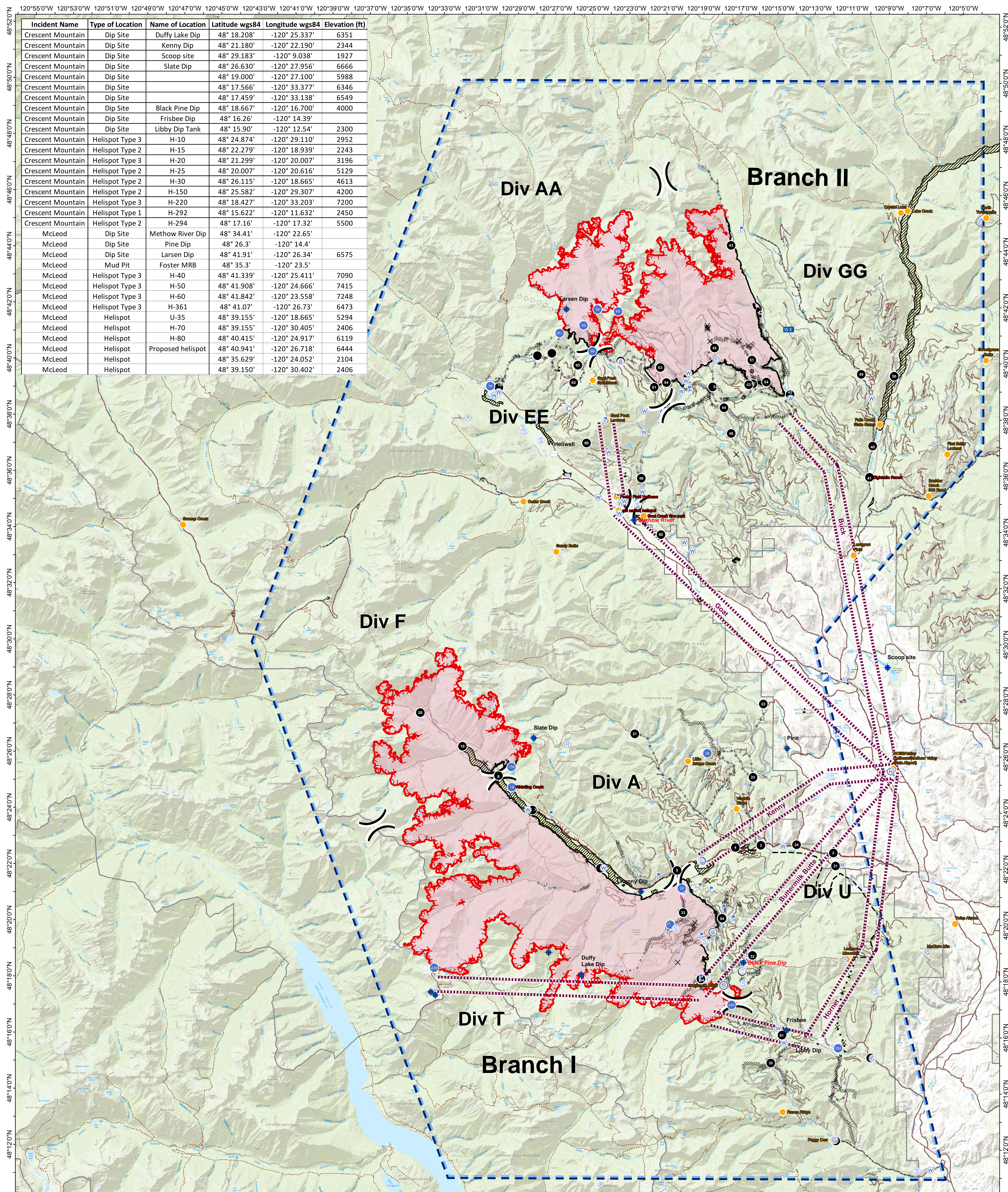


# Air Ops Briefing Map



Crescent Mountain Fire  
WA-OWF-000428  
Acreage: 51,363

McLeod Fire  
WA-OWF-000522  
Acreage: 22,848



Incident Name	Type of Location	Name of Location	Latitude wgs84	Longitude wgs84	Elevation (ft)
Crescent Mountain	Dip Site	Duffy Lake Dip	48° 18.208'	-120° 25.337'	6351
Crescent Mountain	Dip Site	Kenny Dip	48° 21.180'	-120° 22.190'	2344
Crescent Mountain	Dip Site	Scoop site	48° 29.183'	-120° 9.038'	1927
Crescent Mountain	Dip Site	Slate Dip	48° 26.630'	-120° 27.956'	6666
Crescent Mountain	Dip Site		48° 19.000'	-120° 27.100'	5988
Crescent Mountain	Dip Site		48° 17.566'	-120° 33.377'	6346
Crescent Mountain	Dip Site		48° 17.459'	-120° 33.138'	6549
Crescent Mountain	Dip Site	Black Pine Dip	48° 18.667'	-120° 16.700'	4000
Crescent Mountain	Dip Site	Frisbee Dip	48° 16.26'	-120° 14.39'	
Crescent Mountain	Dip Site	Libby Dip Tank	48° 15.90'	-120° 12.54'	2300
Crescent Mountain	Helispot Type 3	H-10	48° 24.874'	-120° 29.110'	2952
Crescent Mountain	Helispot Type 2	H-15	48° 22.279'	-120° 18.939'	2243
Crescent Mountain	Helispot Type 3	H-20	48° 21.299'	-120° 20.007'	3196
Crescent Mountain	Helispot Type 2	H-25	48° 20.007'	-120° 20.616'	5129
Crescent Mountain	Helispot Type 2	H-30	48° 26.115'	-120° 18.665'	4613
Crescent Mountain	Helispot Type 2	H-150	48° 25.582'	-120° 29.307'	4200
Crescent Mountain	Helispot Type 3	H-220	48° 18.427'	-120° 33.203'	7200
Crescent Mountain	Helispot Type 1	H-292	48° 15.622'	-120° 11.632'	2450
Crescent Mountain	Helispot Type 2	H-294	48° 17.16'	-120° 17.32'	5500
McLeod	Dip Site	Methow River Dip	48° 34.41'	-120° 22.65'	
McLeod	Dip Site	Pine Dip	48° 26.3'	-120° 14.4'	
McLeod	Dip Site	Larsen Dip	48° 41.91'	-120° 26.34'	6575
McLeod	Mud Pit	Foster MRB	48° 35.3'	-120° 23.5'	
McLeod	Helispot Type 3	H-40	48° 41.339'	-120° 25.411'	7090
McLeod	Helispot Type 3	H-50	48° 41.908'	-120° 24.666'	7415
McLeod	Helispot Type 3	H-60	48° 41.842'	-120° 23.558'	7248
McLeod	Helispot Type 3	H-361	48° 41.07'	-120° 26.73'	6473
McLeod	Helispot	U-35	48° 39.155'	-120° 18.665'	5294
McLeod	Helispot	H-70	48° 39.155'	-120° 30.405'	2406
McLeod	Helispot	H-80	48° 40.415'	-120° 24.917'	6119
McLeod	Helispot	Proposed helispot	48° 40.941'	-120° 26.718'	6444
McLeod	Helispot		48° 35.629'	-120° 24.052'	2104
McLeod	Helispot		48° 39.150'	-120° 30.402'	2406

● MVRD Helispot   
 ● Fire Station   
 ■ Landmark   
 ▲ Sling Site   
 --- Flight Routes   
 ----- Completed Dozer Line   
 ----- Planned Fire Line   
 ----- 1 - BASIC CUSTODIAL CARE (CLOSED)   
 ----- Wildfire Daily Fire Perimeter

○ Camp   
 ○ Gate   
 ○ Helibase   
 ○ Staging Area   
 ○ Water Source   
 ○ Water Tank   
 ○ Repeater   
 ○ Retardant/Mud Pit   
 ○ Division Break   
 ○ Hot Spot   
 ○ Incident Command Post   
 ○ Internet Access   
 ○ Lookout   
 ○ Mobile Weather Unit   
 ○ Pump   
 ○ Repeater   
 ○ Retardant/Mud Pit   
 ○ Value at Risk   
 ○ Aerial Retardant Drop   
 ○ Air Tanker Retardant   
 ○ Other   
 ○ Proposed Dozer Line   
 ○ Unknown   
 ○ H - H Completed Hand Line   
 ○ R - R Road as Completed Line   
 ○ Access or Improved Road   
 ○ Completed Line   
 ○ 2 - HIGH CLEARANCE VEHICLES   
 ○ 3 - SUITABLE FOR PASSENGER CARS   
 ○ 4 - MODERATE DEGREE OF USER COMFORT   
 ○ CLOSED/DECOMM   
 ○ Twisp River Road   
 ○ Trails   
 ○ Retardant Avoidance Areas

9/12/2018 @ 2250  
NAD 83 USFS R6 Albers (Meters)

**09/13/2018**

Miles  
0 0.5 1 2 3 4