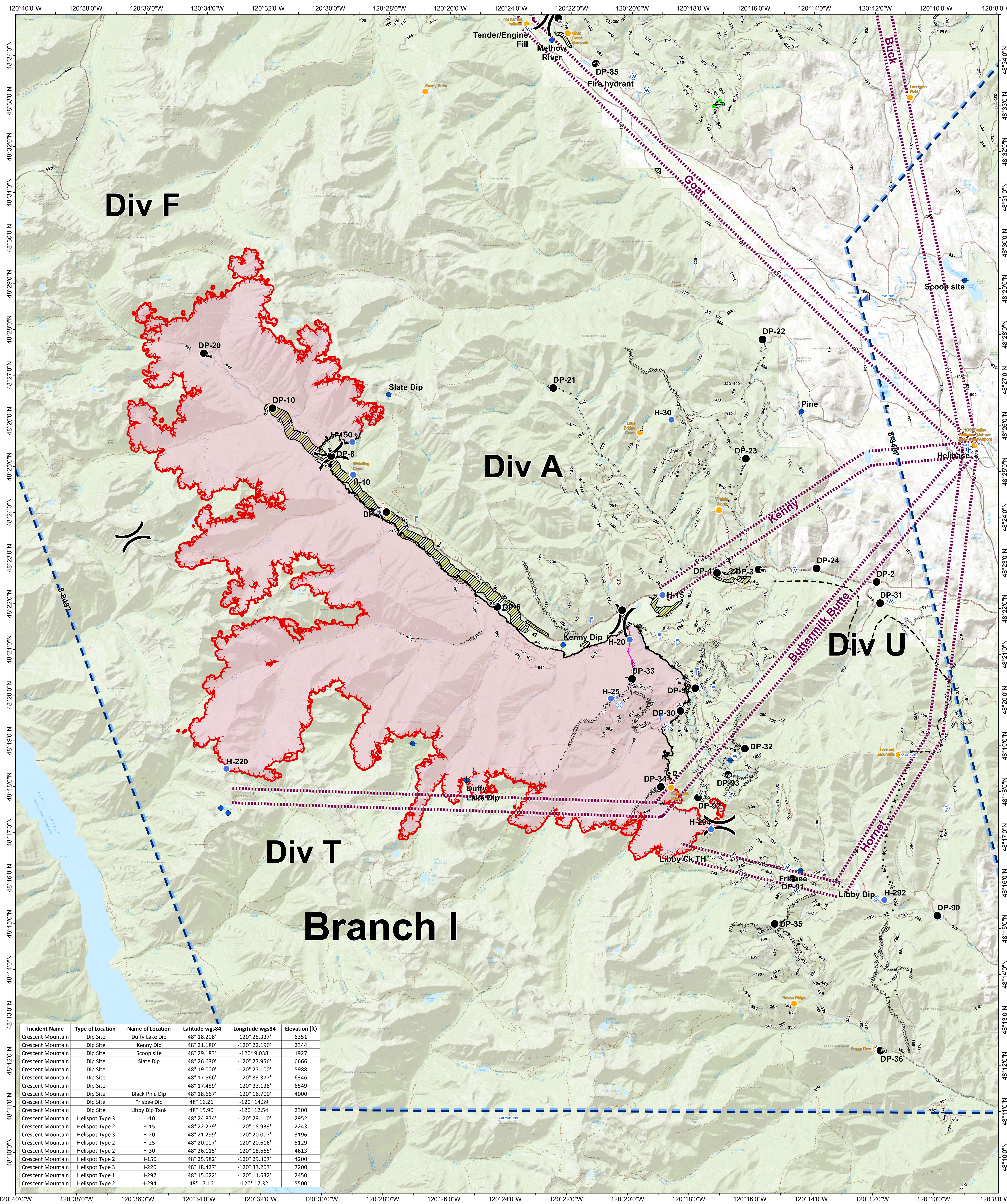


Air Ops Pilot Map

Crescent Mountain Fire

WA-OWF-000428

Acreage: 51,363



Incident Name	Type of Location	Name of Location	Latitude wgs84	Longitude wgs84	Elevation (ft)
Crescent Mountain	Dip Site	Duffy Lake Dip	48° 18.208'	-120° 25.337'	6351
Crescent Mountain	Dip Site	Kenny Dip	48° 21.180'	-120° 22.190'	2344
Crescent Mountain	Dip Site	Scoop site	48° 29.183'	-120° 9.038'	1927
Crescent Mountain	Dip Site	Slate Dip	48° 26.630'	-120° 27.956'	6666
Crescent Mountain	Dip Site		48° 19.000'	-120° 27.100'	5988
Crescent Mountain	Dip Site		48° 17.566'	-120° 33.377'	6346
Crescent Mountain	Dip Site		48° 17.459'	-120° 33.138'	6549
Crescent Mountain	Dip Site	Black Pine Dip	48° 18.667'	-120° 16.700'	4000
Crescent Mountain	Dip Site	Frisbee Dip	48° 16.261'	-120° 14.391'	4000
Crescent Mountain	Dip Site	Libby Dip Tank	48° 15.901'	-120° 12.541'	2300
Crescent Mountain	Helispot Type 3	H-10	48° 24.874'	-120° 29.110'	2952
Crescent Mountain	Helispot Type 3	H-15	48° 22.279'	-120° 18.939'	2243
Crescent Mountain	Helispot Type 3	H-20	48° 21.299'	-120° 20.007'	3196
Crescent Mountain	Helispot Type 2	H-25	48° 20.007'	-120° 20.616'	5129
Crescent Mountain	Helispot Type 2	H-30	48° 26.115'	-120° 18.665'	4613
Crescent Mountain	Helispot Type 2	H-150	48° 25.582'	-120° 29.307'	4200
Crescent Mountain	Helispot Type 3	H-220	48° 18.427'	-120° 33.203'	7200
Crescent Mountain	Helispot Type 1	H-292	48° 15.622'	-120° 11.632'	2450
Crescent Mountain	Helispot Type 2	H-294	48° 17.161'	-120° 17.321'	5500

120°40'0"W 120°38'0"W 120°36'0"W 120°34'0"W 120°32'0"W 120°30'0"W 120°28'0"W 120°26'0"W 120°24'0"W 120°22'0"W 120°20'0"W 120°18'0"W 120°16'0"W 120°14'0"W 120°12'0"W 120°10'0"W 120°8'0"W

48°34'0"N 48°33'0"N 48°32'0"N 48°31'0"N 48°30'0"N 48°29'0"N 48°28'0"N 48°27'0"N 48°26'0"N 48°25'0"N 48°24'0"N 48°23'0"N 48°22'0"N 48°21'0"N 48°20'0"N 48°19'0"N 48°18'0"N 48°17'0"N 48°16'0"N 48°15'0"N 48°14'0"N 48°13'0"N 48°12'0"N 48°11'0"N 48°10'0"N

0 0.5 1 2 3 4 Miles

⊙ Camp ⊙ Helibase ⊙ Lookout ⊙ Water Source
⊙ Closure ⊙ Helispot ⊙ Pump ⊙ Water Tank
⊙ Dip Site ⊙ Hot Spot ⊙ Repeater ⊙ Value at Risk
⊙ Fire Origin ⊙ Incident Command Post ⊙ Sling Site ⊙ Division Break
⊙ Internet Access ⊙ Spot Fire ⊙ MVRD Helispot ⊙ Retardant Avoidance Areas
⊙ Gate ⊙ Landmark ⊙ Staging Area ⊙ Retardant Avoidance Areas

— TFR — Road as Completed Line — 1 - BASIC CUSTODIAL CARE (CLOSED)
— Flight Routes — Access or Improved Road — 2 - HIGH CLEARANCE VEHICLES
— Wildfire Daily Fire Perimeter — Proposed Dozer Line — 3 - SUITABLE FOR PASSENGER CARS
— Uncontrolled Fire Edge — Planned Fire Line — 4 - MODERATE DEGREE OF USER COMFORT
— Completed Dozer Line — Completed Line — CLOSED/DECOMM
— Completed Hand Line — Other — Twisp River Road
— — — Trails
— — — Radio Tower

9/12/2018 @ 2212
NAD 83 USFS R6 Albers (Meters)

09/13/2018