

120°41'0"W 120°39'0"W 120°37'0"W 120°35'0"W 120°33'0"W 120°31'0"W 120°29'0"W 120°27'0"W 120°25'0"W 120°23'0"W 120°21'0"W 120°19'0"W 120°17'0"W 120°15'0"W 120°13'0"W 120°11'0"W 120°9'0"W

**Crescent Mtn  
WA-OWF-000428  
McLeod  
WA-OWF-000522  
IAP Index Map  
September 13, 2018**



Div AA

Branch II

Page # 1

Page # 2

Page # 3

Page # 4

Page # 5

Page # 6

DP-43

H-40 H-50 H-80

DP-66 DP-67 DP-65 DP-60 DP-63 DP-51 DP-64 DP-54 DP-42 DP-49 DP-50

DP-45 DP-44 DP-46 DP-47 DP-48 DP-81 DP-85

Div GG

Div EE

**McLeod  
Fire**

Div F

Page # 7

Page # 8

Page # 9

Page # 10

Page # 11

Page # 12

DP-20

DP-10

H-150 H-10

DP-7

**Crescent Mtn  
Fire**

Div A

Div U

Page # 13

Page # 14

Page # 15

Page # 16

Page # 17

H-220

H-25 H-20 H-15

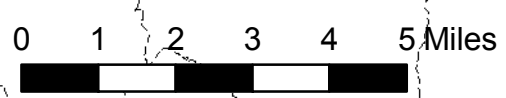
DP-94 DP-30 DP-32 DP-34 DP-92 DP-20 H-294

DP-4 DP-24 DP-2 DP-3 DP-31 DP-22 DP-21 DP-23

DP-40 DP-41 DP-42 DP-43 DP-44 DP-45 DP-46 DP-47 DP-48 DP-49 DP-50 DP-51 DP-54 DP-60 DP-63 DP-64 DP-65 DP-66 DP-67 DP-70 H-70 DP-80 DP-81 DP-85

Div T

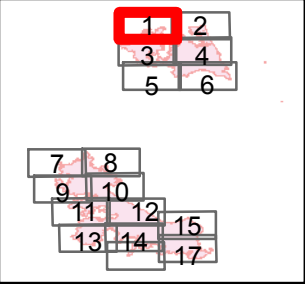
Branch I



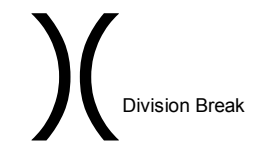
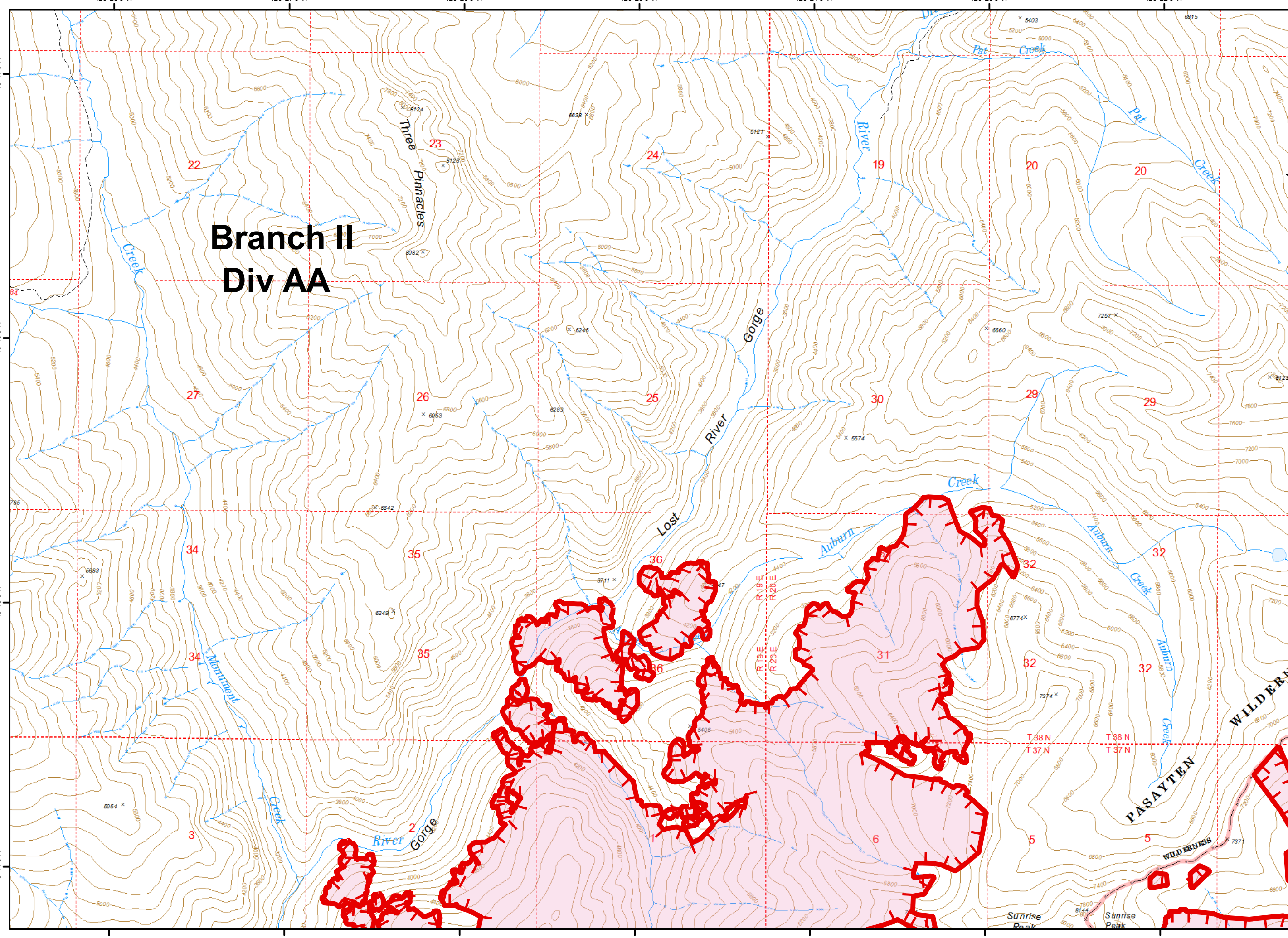
48°48'0"N 48°47'0"N 48°46'0"N 48°45'0"N 48°44'0"N 48°43'0"N 48°42'0"N 48°41'0"N 48°40'0"N 48°39'0"N 48°38'0"N 48°37'0"N 48°36'0"N 48°35'0"N 48°34'0"N 48°33'0"N 48°32'0"N 48°31'0"N 48°30'0"N 48°29'0"N 48°28'0"N 48°27'0"N 48°26'0"N 48°25'0"N 48°24'0"N 48°23'0"N 48°22'0"N 48°21'0"N 48°20'0"N 48°19'0"N 48°18'0"N 48°17'0"N 48°16'0"N 48°15'0"N

120°9'0"W 120°11'0"W 120°13'0"W 120°15'0"W 120°17'0"W 120°19'0"W 120°21'0"W 120°23'0"W 120°25'0"W 120°27'0"W 120°29'0"W 120°31'0"W 120°33'0"W 120°35'0"W 120°37'0"W 120°39'0"W 120°41'0"W

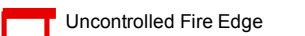
200 Ft Contours



# Branch II Div AA



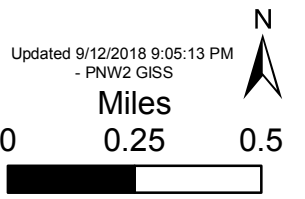
Division Break

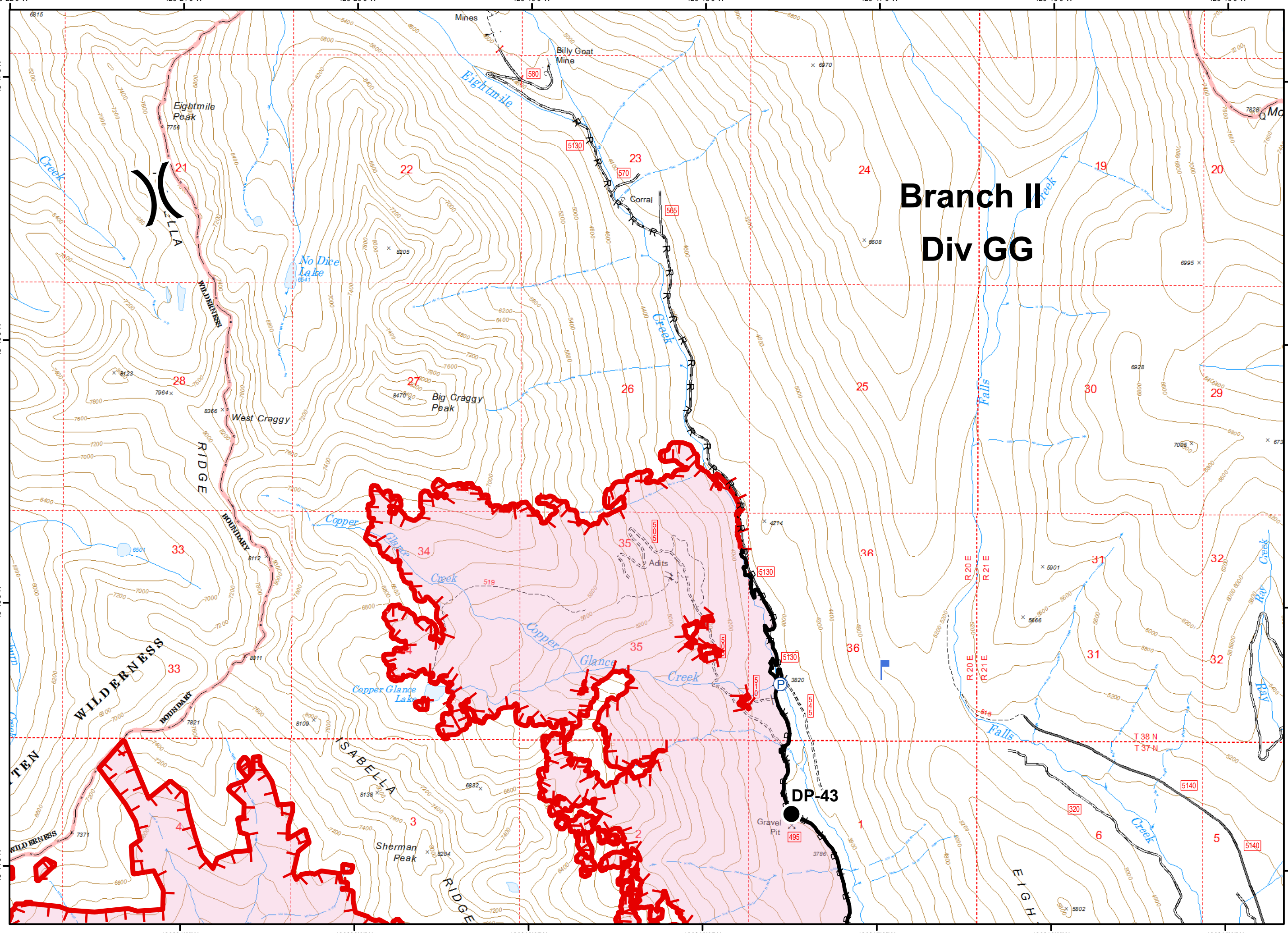
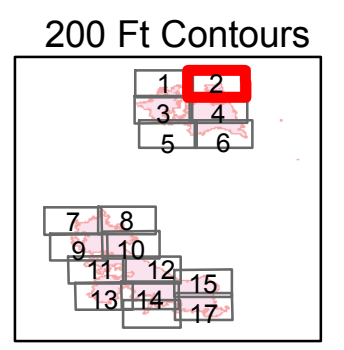


Uncontrolled Fire Edge



Wildfire Daily Fire Perimeter



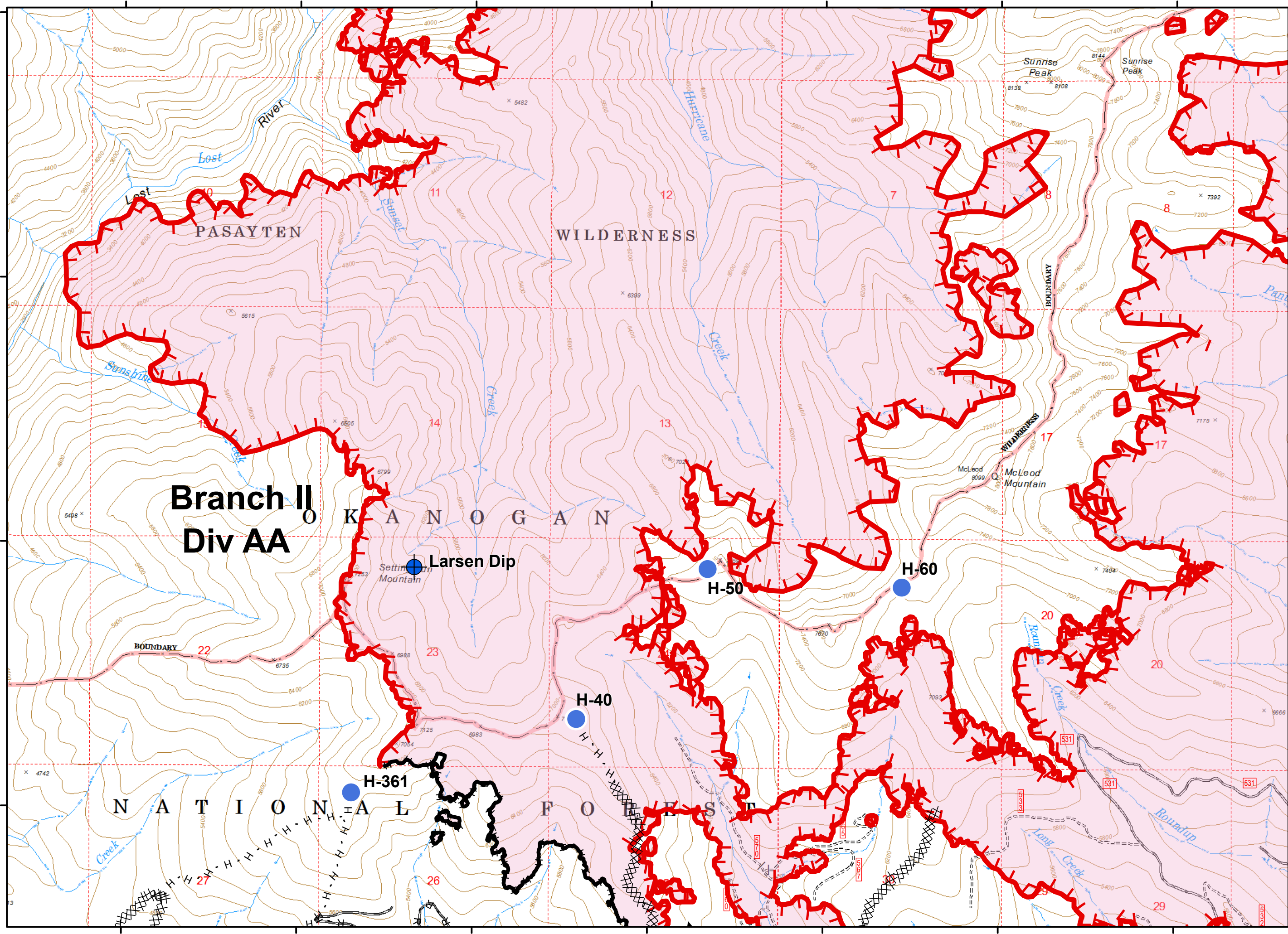
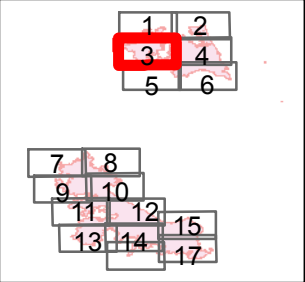


- Drop Point
- Lookout
- Ⓟ Pump
- ⌋ Division Break
- ▬ Uncontrolled Fire Edge
- ▬ Completed Line
- R - Road as Completed Line
- ▭ Wildfire Daily Fire Perimeter

Updated 9/12/2018 9:05:13 PM  
- PNW2 GISS

Miles  
0 0.25 0.5

200 Ft Contours



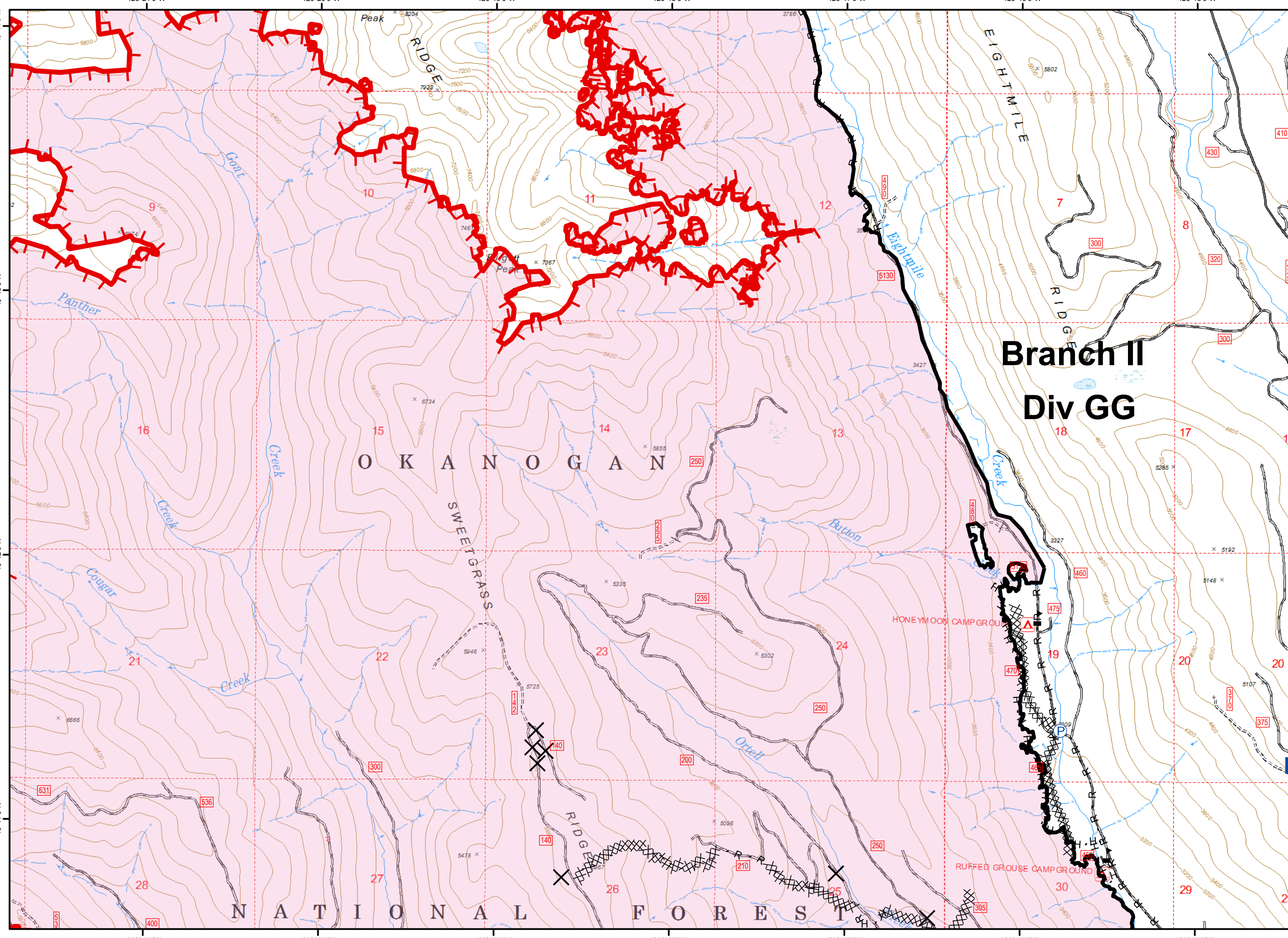
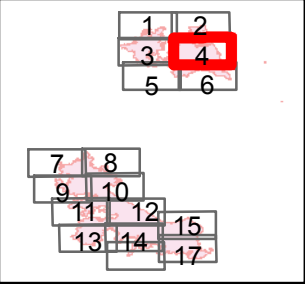
- Dip Site
- Helispot
- Division Break

- Uncontrolled Fire Edge
- Completed Line
- Completed Dozer Line
- Completed Hand Line
- Road as Completed Line
- Wildfire Daily Fire Perimeter

Updated 9/12/2018 9:05:13 PM  
- PNW2 GISS

Miles  
0 0.25 0.5

200 Ft Contours



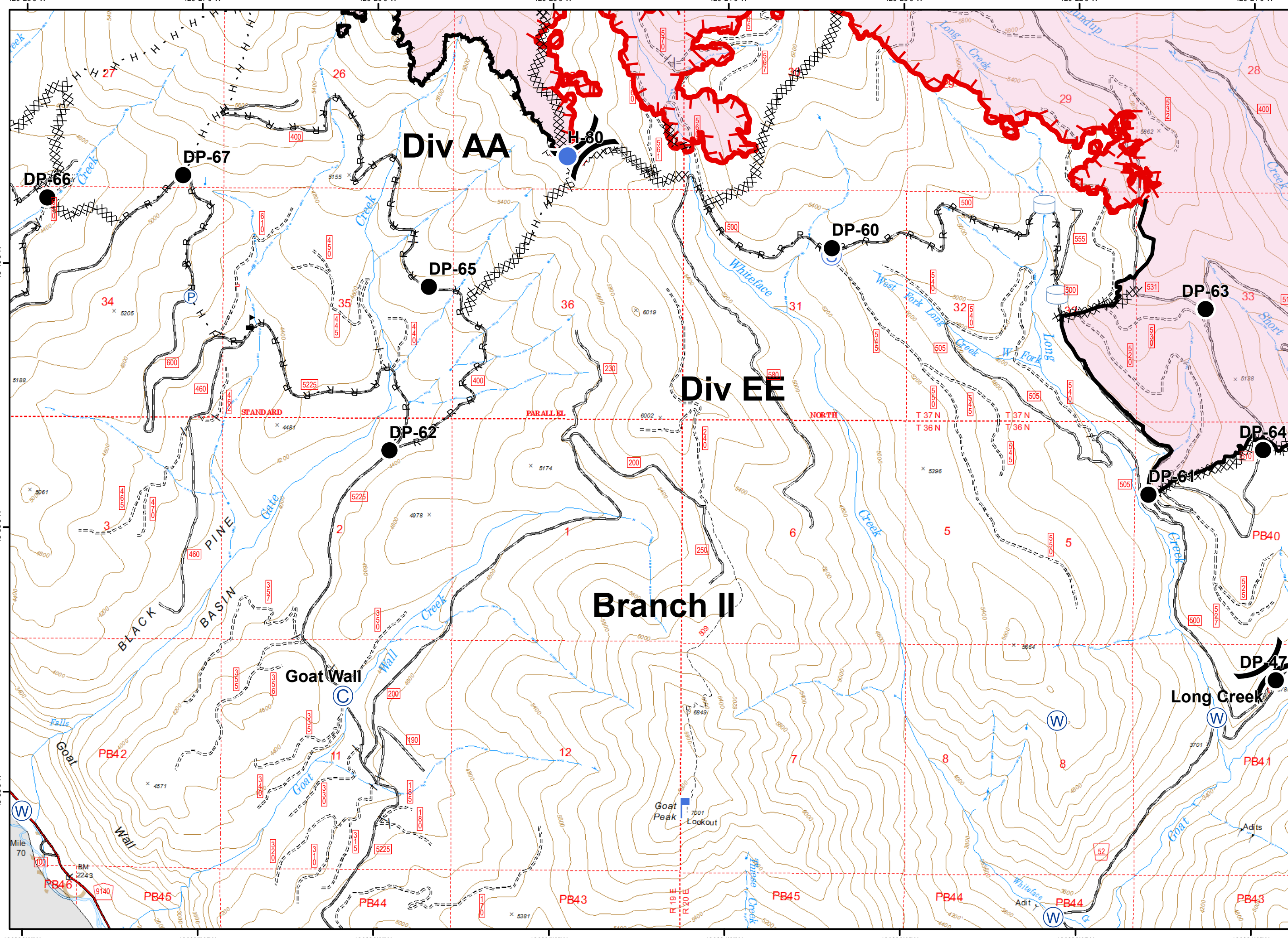
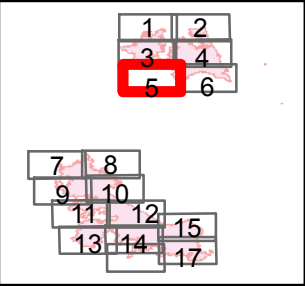
# Branch II Div GG

- ✕ Closure
- Drop Point
- WX Mobile Weather Unit
- P Pump
- ▲ Value at Risk
- ▬ Uncontrolled Fire Edge
- ▬ Completed Line
- XXXX Completed Dozer Line
- H - Completed Hand Line
- R - Road as Completed Line
- ▭ Wildfire Daily Fire Perimeter

Updated 9/12/2018 9:05:13 PM  
 - PNW2 GISS

Miles  
 0 0.25 0.5

200 Ft Contours



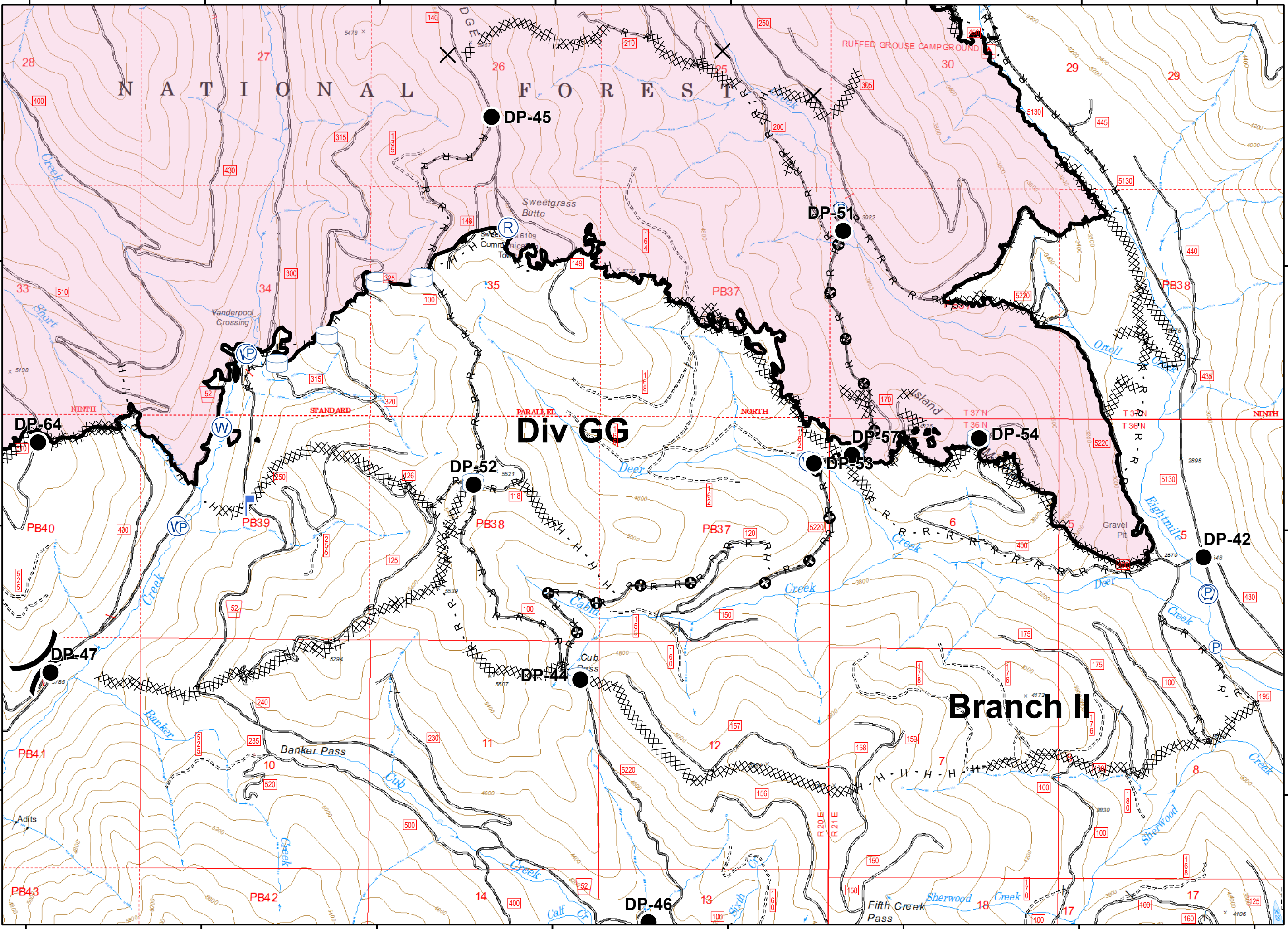
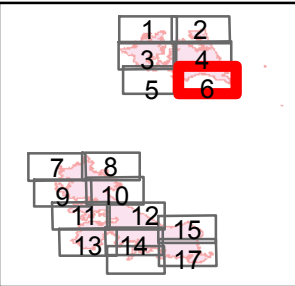
- Camp
- Drop Point
- Helispot
- Lookout
- Pump
- Staging Area
- Water Source
- Water Tank
- Value at Risk
- Division Break

- Uncontrolled Fire Edge
- Completed Line
- Completed Dozer Line
- Completed Hand Line
- Road as Completed Line
- Wildfire Daily Fire Perimeter

Updated 9/12/2018 9:05:13 PM  
- PNW2 GISS

Miles  
0 0.25 0.5

200 Ft Contours

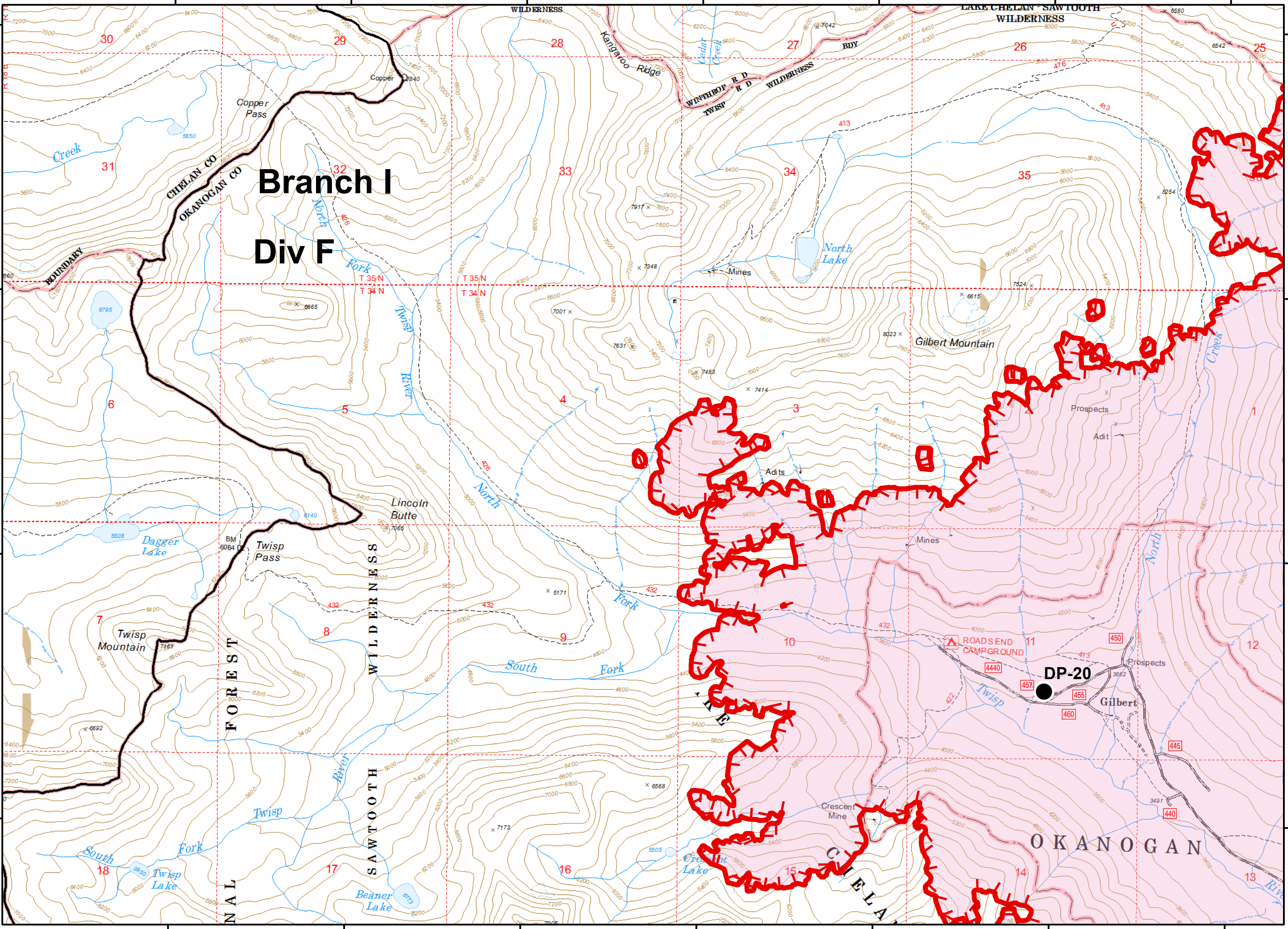
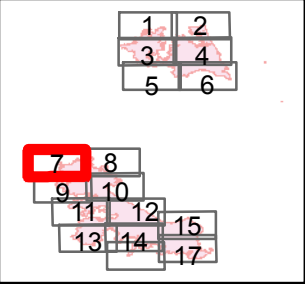


- Closure
- Drop Point
- Lookout
- Pump
- Repeater
- Water Source
- Water Tank
- Value at Risk
- Division Break
- Completed Line
- Completed Dozer Line
- Completed Hand Line
- Road as Completed Line
- Other
- Wildfire Daily Fire Perimeter

Updated 9/12/2018 9:05:13 PM  
 - PNW2 GISS

Miles  
 0 0.25 0.5

200 Ft Contours



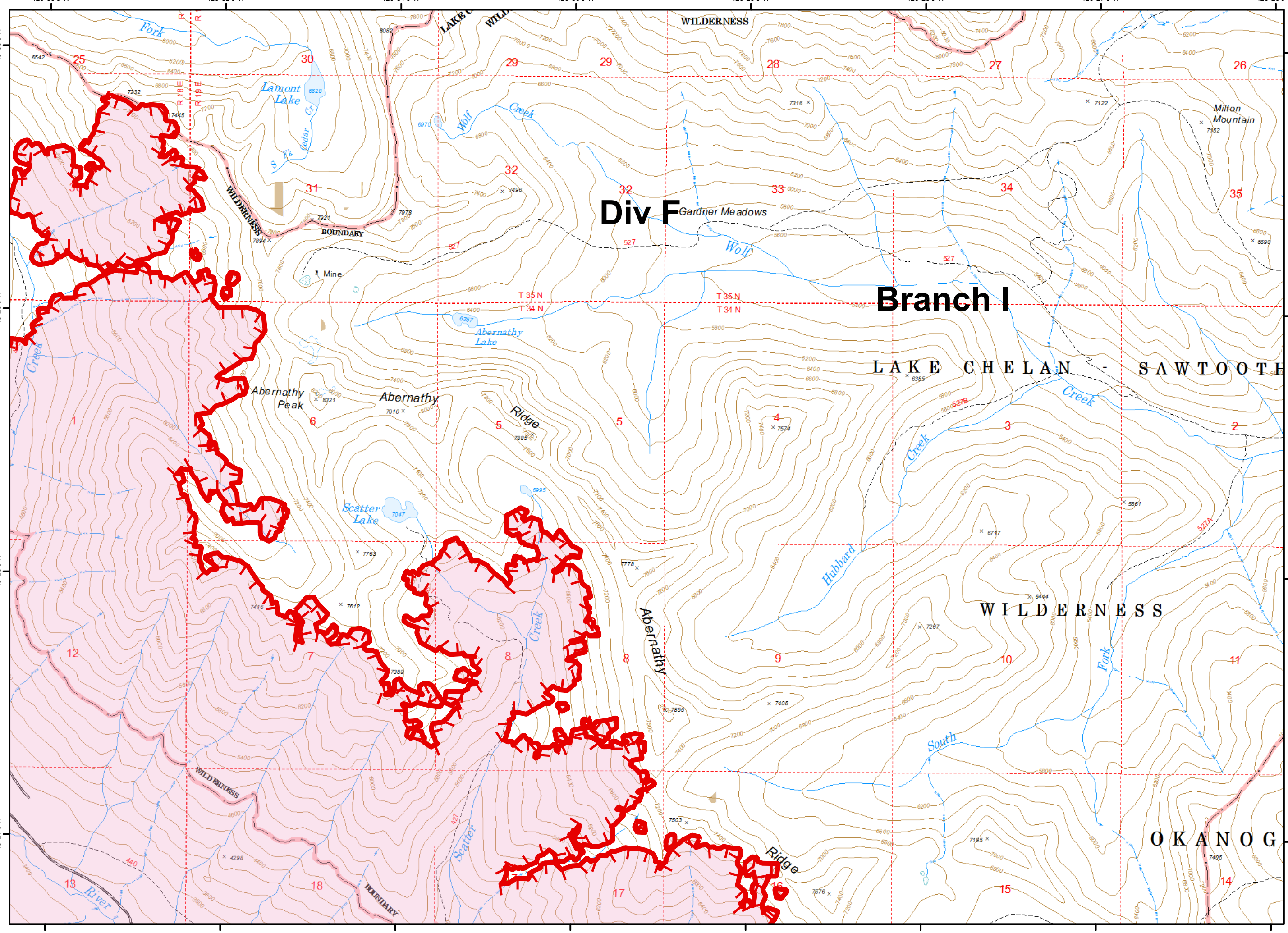
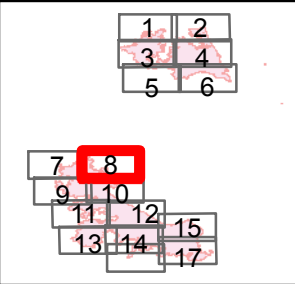
● Drop Point  
┌ Uncontrolled Fire Edge  
▭ Wildfire Daily Fire Perimeter

Updated 9/12/2018 9:05:13 PM  
- PNW2 GISS

Miles  
0 0.25 0.5



200 Ft Contours



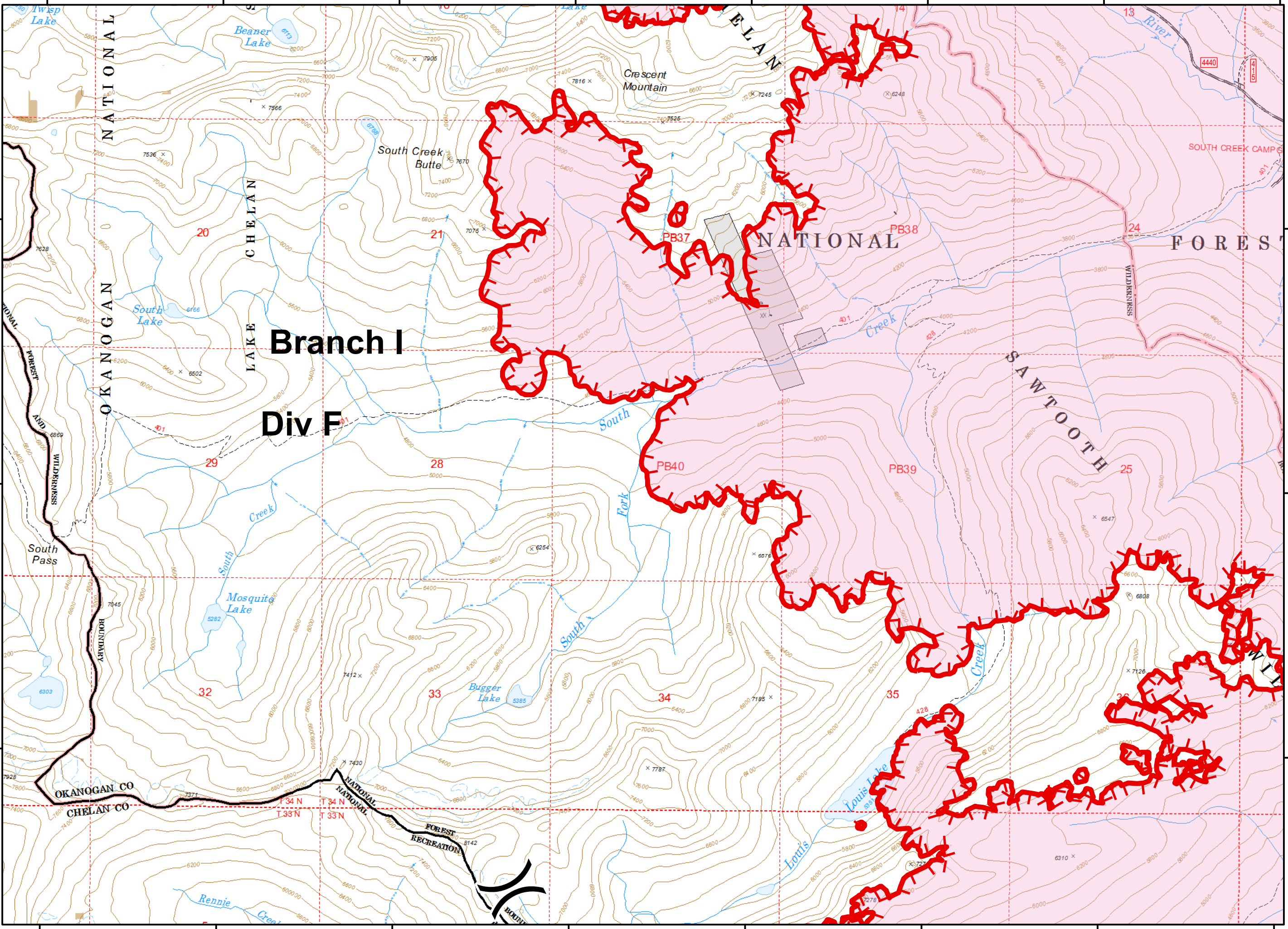
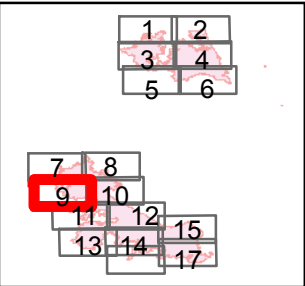
- Uncontrolled Fire Edge
- Wildfire Daily Fire Perimeter

Updated 9/12/2018 9:05:13 PM  
- PNW2 GISS

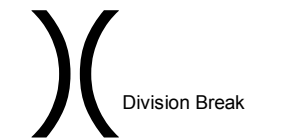
Miles

0 0.25 0.5

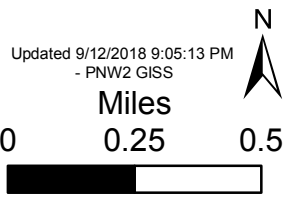
200 Ft Contours



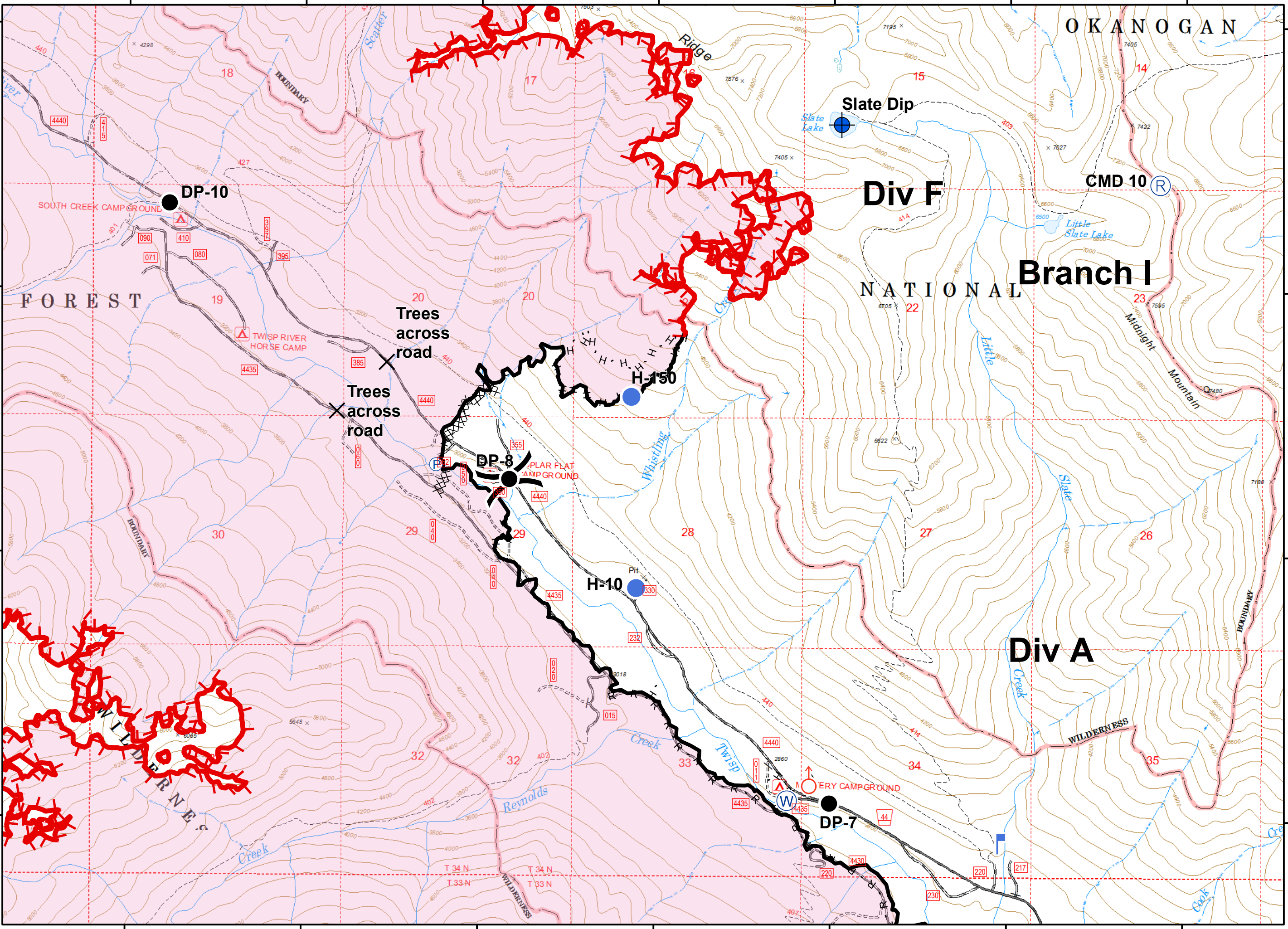
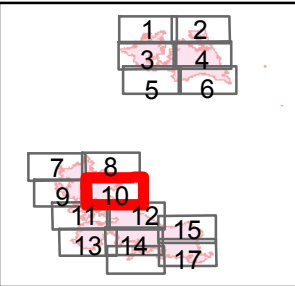
**Branch I**  
**Div F**



- Uncontrolled Fire Edge
- Wildfire Daily Fire Perimeter

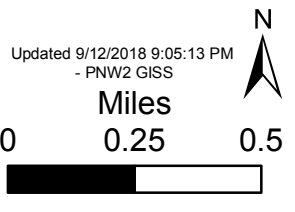


200 Ft Contours

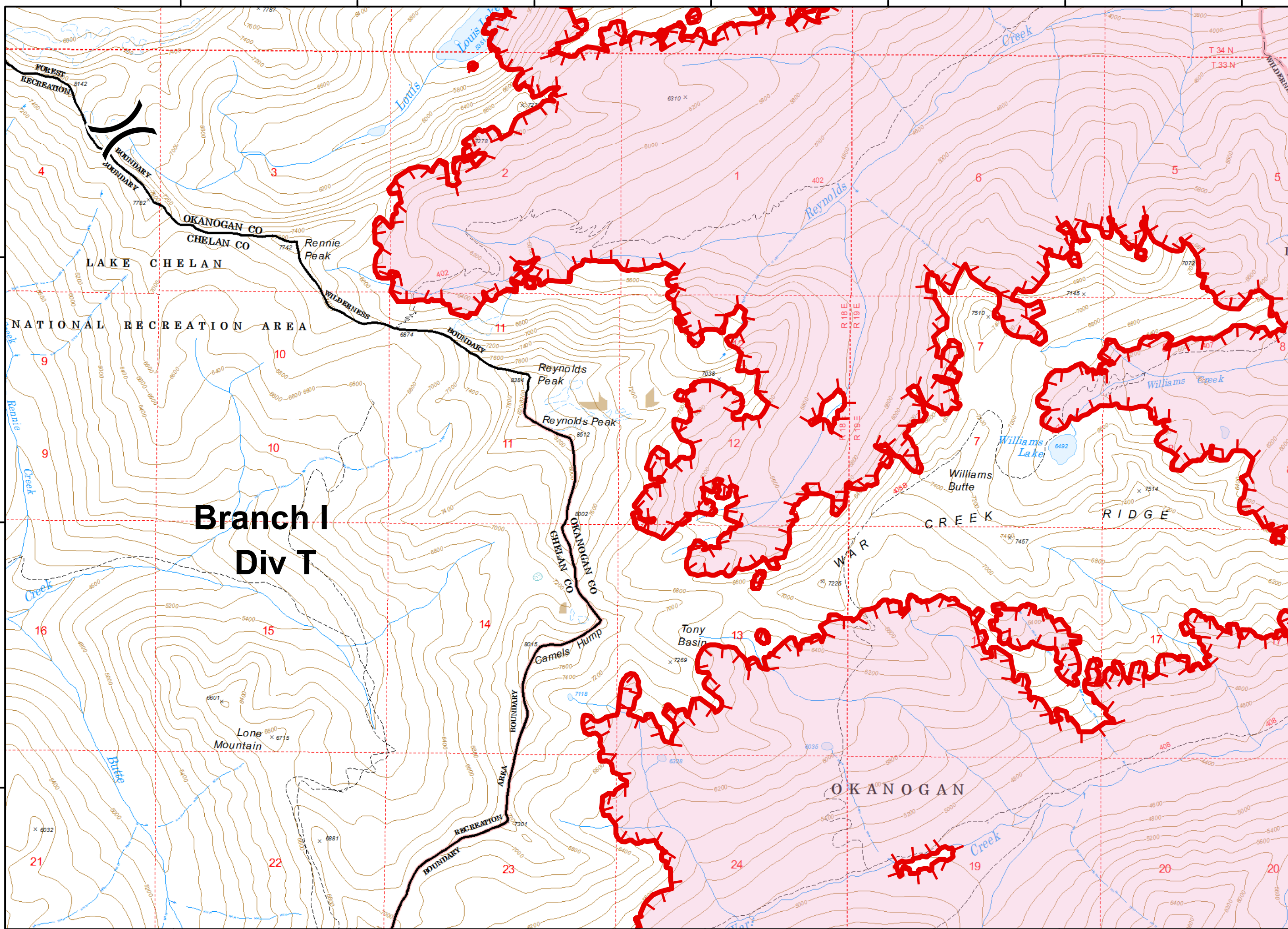
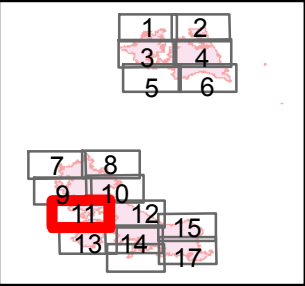


- X Closure
- Dip Site
- Drop Point
- Helispot
- └ Lookout
- Ⓟ Pump
- Ⓡ Repeater
- ♂ Spot Fire
- Ⓜ Water Source
- )) Division Break

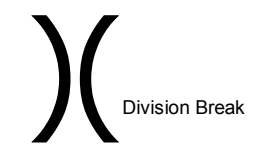
- ▬ Uncontrolled Fire Edge
- ▬ Completed Line
- XXXX Completed Dozer Line
- H - Completed Hand Line
- R - Road as Completed Line
- ▭ Wildfire Daily Fire Perimeter



200 Ft Contours

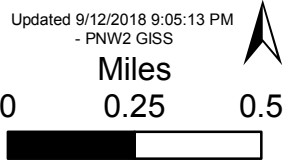


**Branch I  
Div T**

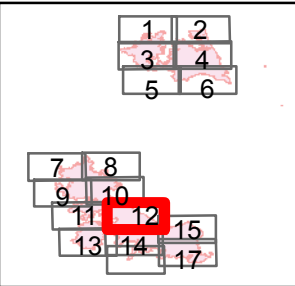


Division Break

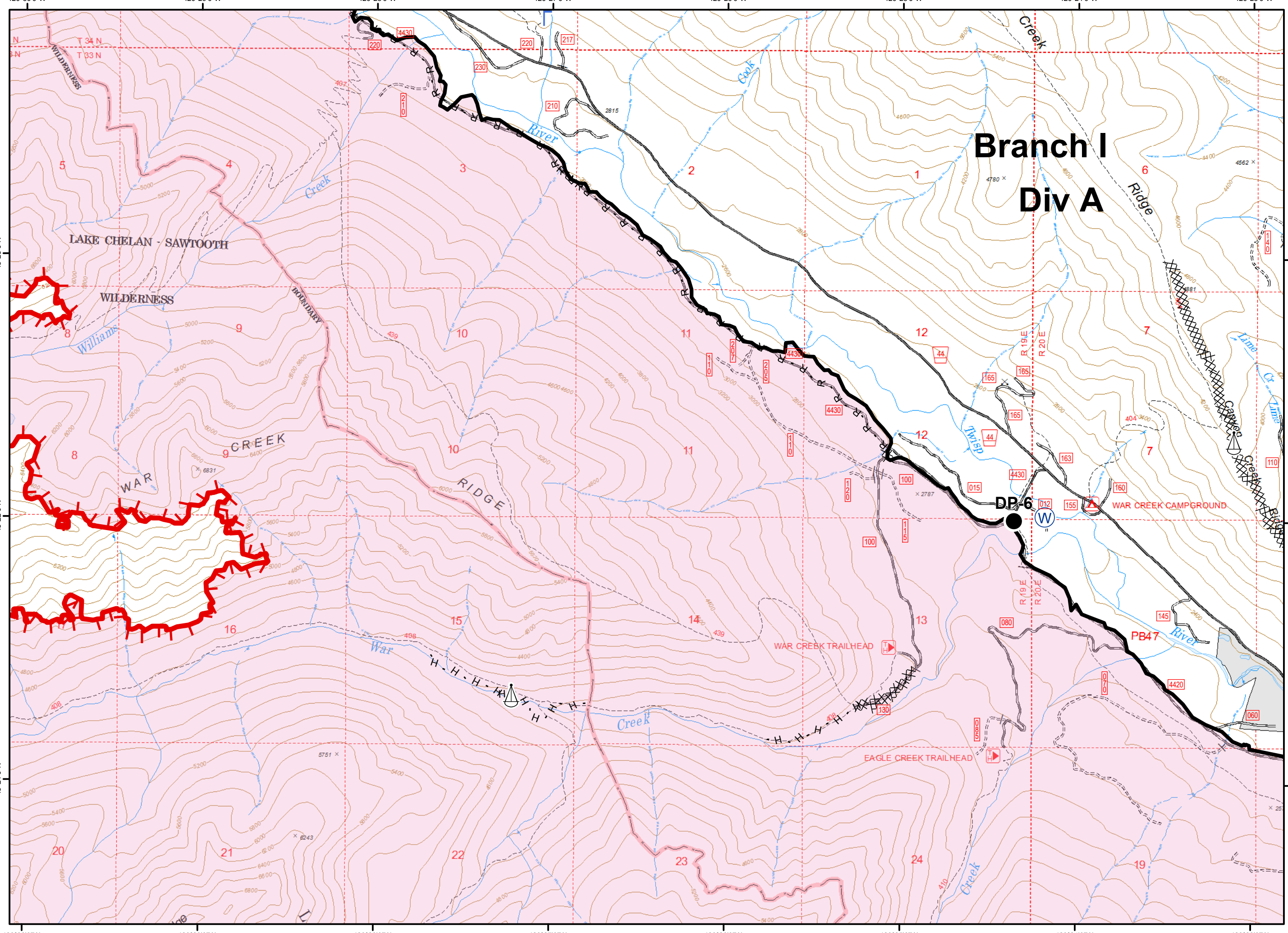
- Uncontrolled Fire Edge
- Wildfire Daily Fire Perimeter



200 Ft Contours



# Branch I Div A



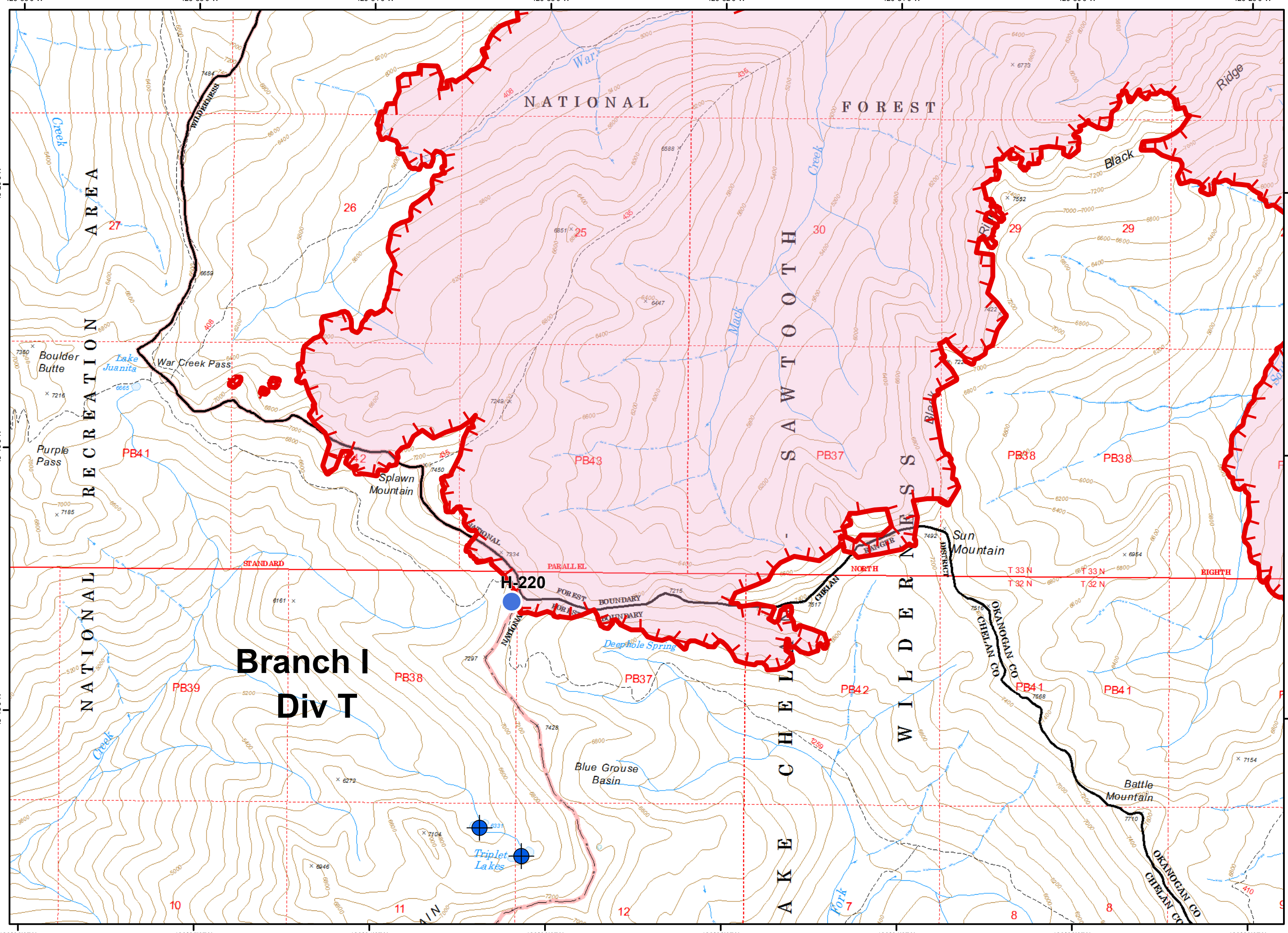
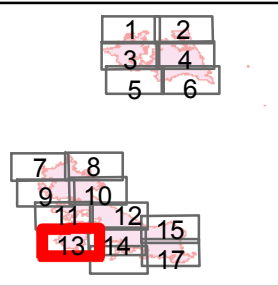
- Drop Point
- Lookout
- Pump
- Sling Site
- Water Source
- Uncontrolled Fire Edge
- Completed Line
- Completed Dozer Line
- Completed Hand Line
- Road as Completed Line
- Wildfire Daily Fire Perimeter

Updated 9/12/2018 9:05:13 PM  
 - PNW2 GISS

Miles  
 0 0.25 0.5

A north arrow points upwards, and a scale bar shows distances of 0, 0.25, and 0.5 miles.

200 Ft Contours

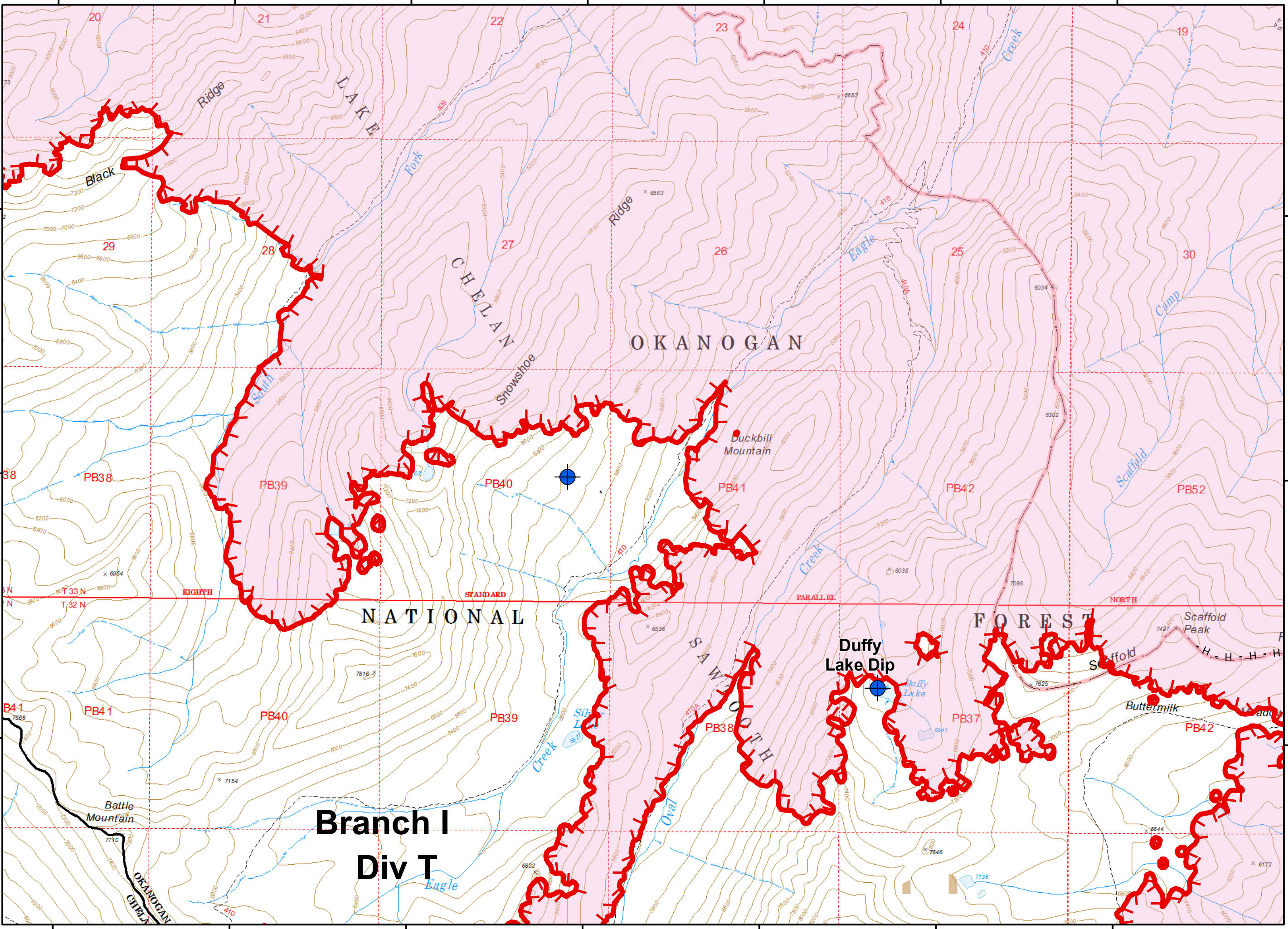
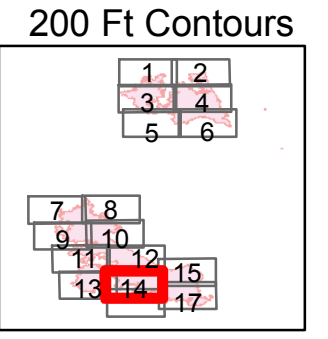


**Branch I  
Div T**

- Dip Site
- Helispot
- Uncontrolled Fire Edge
- Wildfire Daily Fire Perimeter

Updated 9/12/2018 9:05:13 PM  
- PNW2 GISS

Miles  
0 0.25 0.5



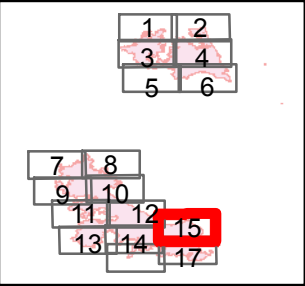
- Dip Site
- Uncontrolled Fire Edge
- Completed Hand Line
- Wildfire Daily Fire Perimeter

Updated 9/12/2018 9:05:13 PM  
- PNW2 GISS

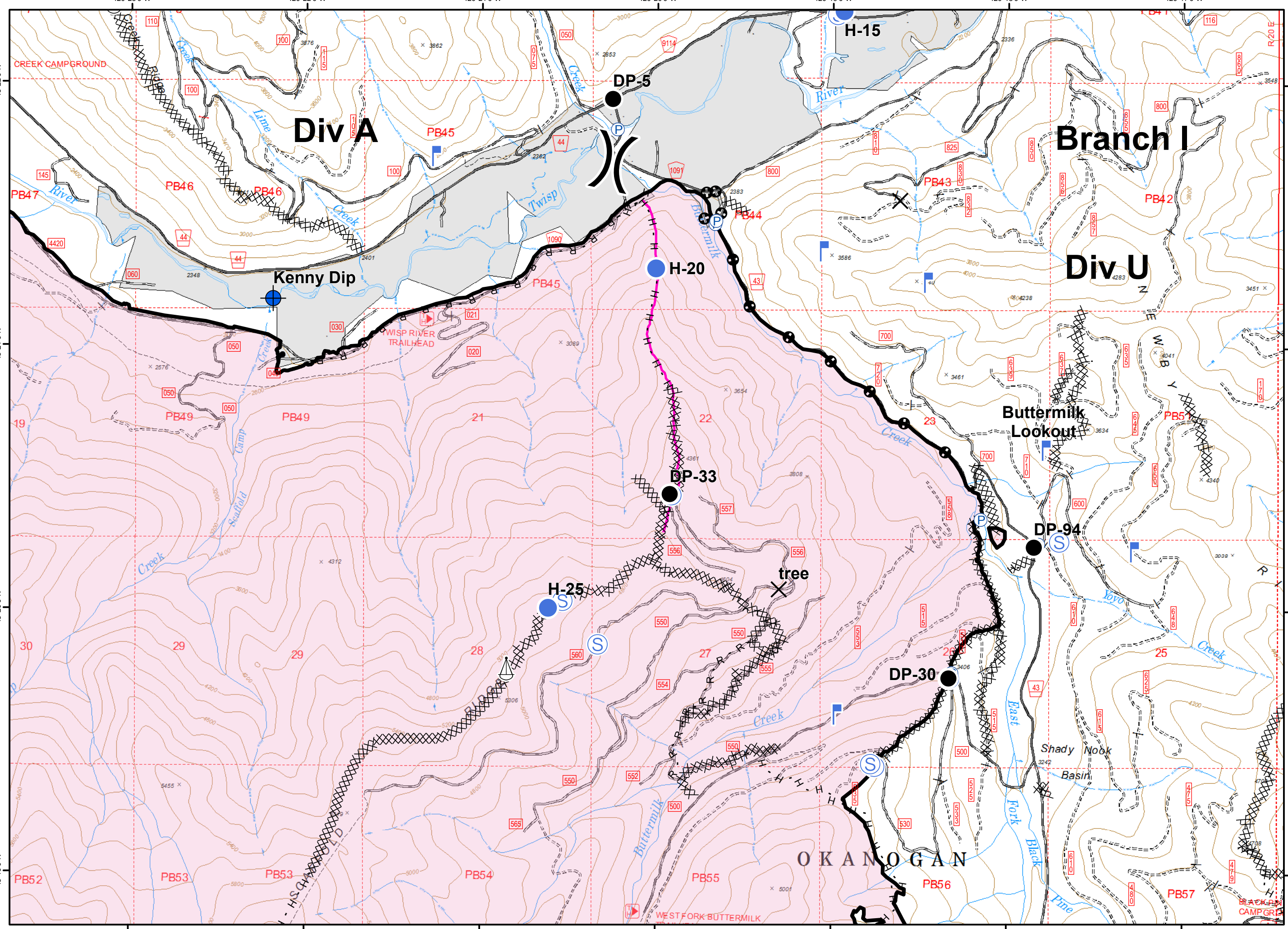
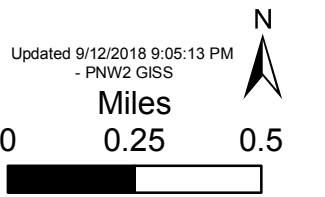
Miles

0 0.25 0.5

200 Ft Contours

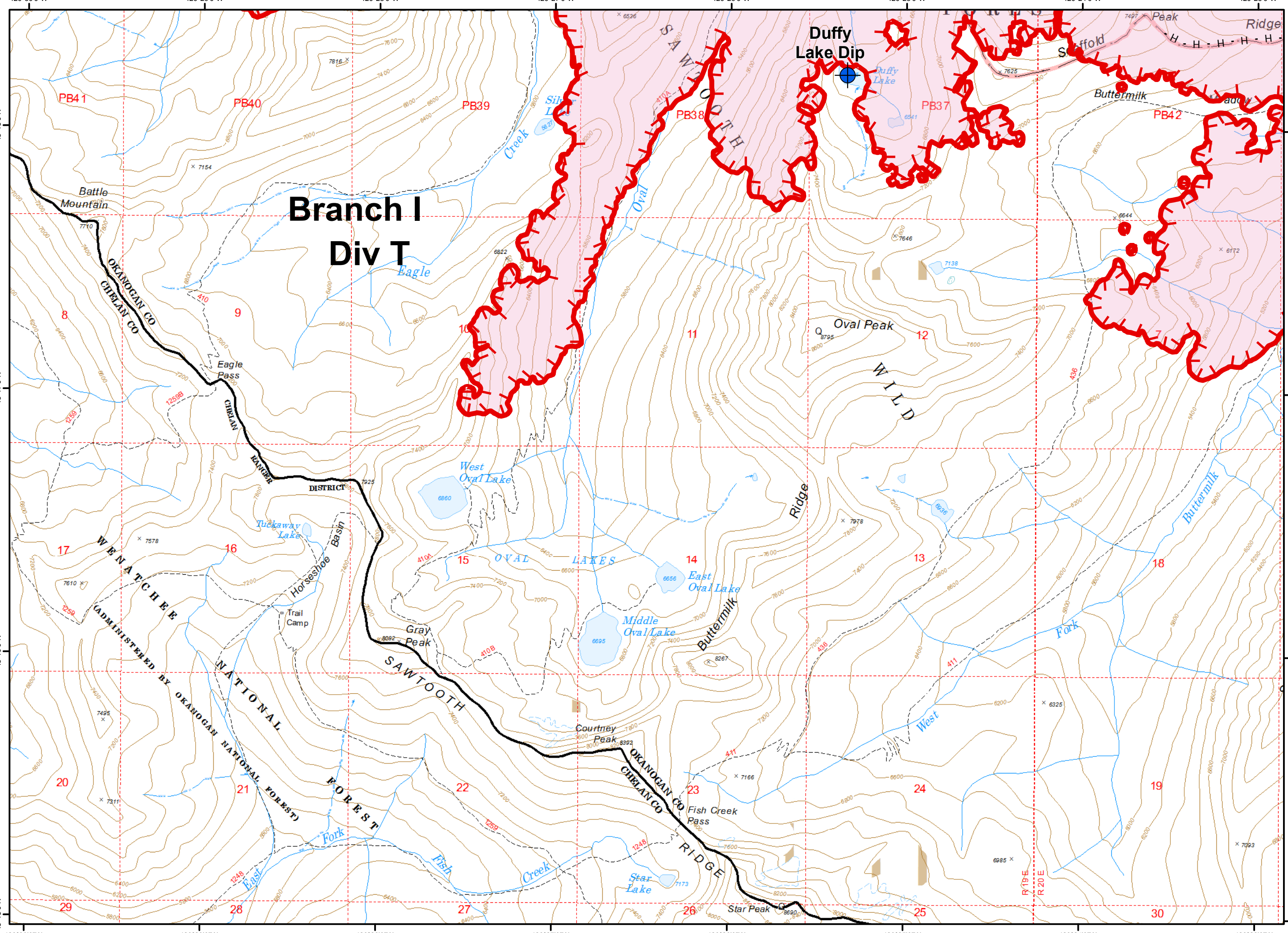
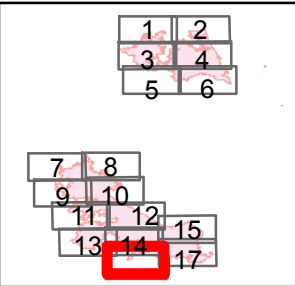


- X Closure
- Dip Site
- Drop Point
- Helispot
- █ Lookout
- P Pump
- ⚙ Sling Site
- S Staging Area
- ) Division Break
- Completed Line
- XXX Completed Dozer Line
- H - Completed Hand Line
- R - Road as Completed Line
- ⊕ Other
- Unknown
- ▭ Wildfire Daily Fire Perimeter





200 Ft Contours

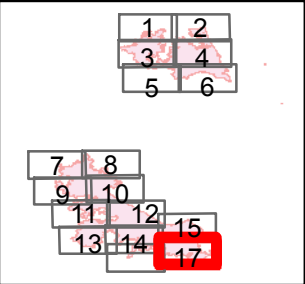


- Dip Site
- Uncontrolled Fire Edge
- Completed Hand Line
- Wildfire Daily Fire Perimeter

Updated 9/12/2018 9:05:13 PM  
- PNW2 GISS

Miles  
0 0.25 0.5

200 Ft Contours



- Closure
- Dip Site
- Drop Point
- Helispot
- Landmark
- Lookout
- Pump
- Repeater
- Staging Area
- Water Source
- Water Tank
- Division Break

- Uncontrolled Fire Edge
- Completed Line
- Completed Dozer Line
- Completed Hand Line
- Road as Completed Line
- Wildfire Daily Fire Perimeter

