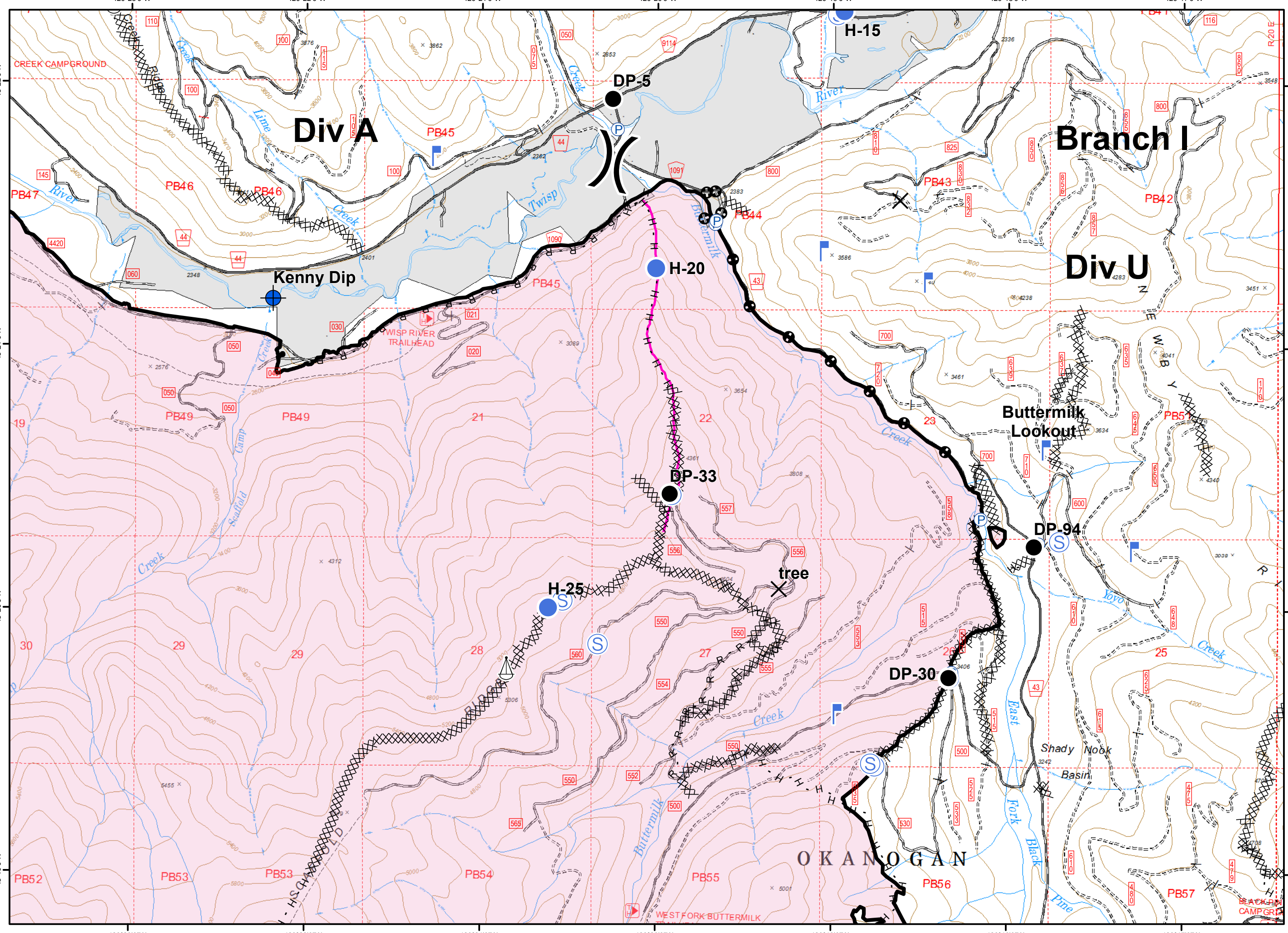
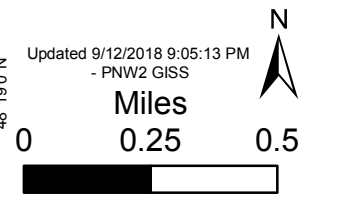


- Closure
- Dip Site
- Drop Point
- Helispot
- Lookout
- Pump
- Sling Site
- Staging Area
- Division Break

- Completed Line
- Completed Dozer Line
- Completed Hand Line
- Road as Completed Line
- Other
- Unknown
- Wildfire Daily Fire Perimeter



120°23'0"W 120°22'0"W 120°21'0"W 120°20'0"W 120°19'0"W 120°18'0"W 120°17'0"W