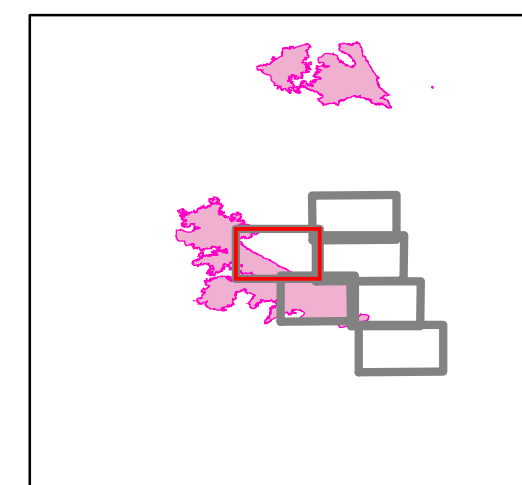
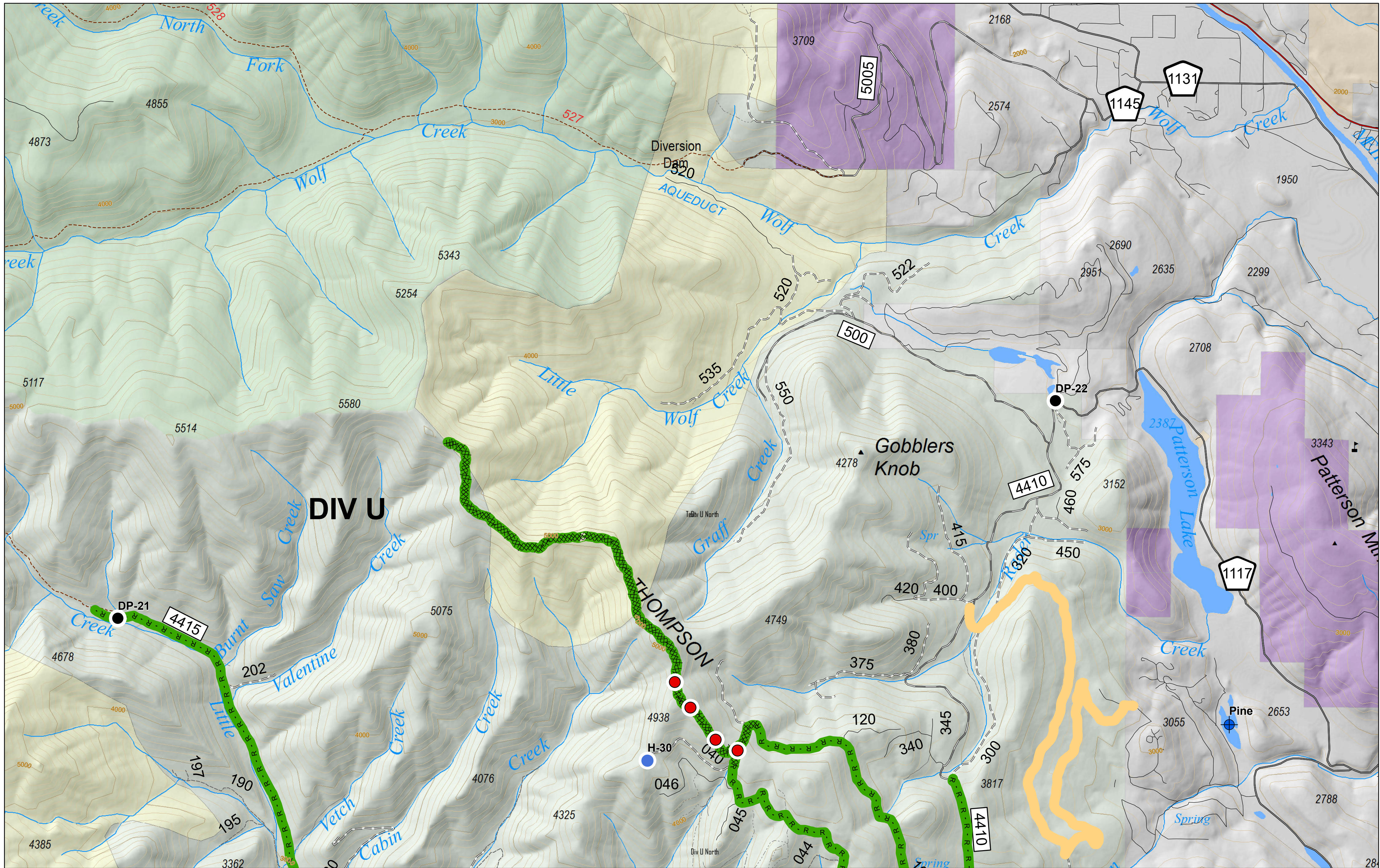


Map Page: **Crescent Mountain Fire**
 1
 9/24/18
WA-OWF-000428
 51,609ac



- | | | | | |
|--|---|---|--|--|
| <ul style="list-style-type: none"> Uncontrolled Fire Edge Completed Line Completed Dozer Line Completed Hand Line Road as Completed Line Aerial Retardant Drop | <p>Repair Status</p> <ul style="list-style-type: none"> Completed - Inspected Completed - Ready for Inspection Repair Needed | <ul style="list-style-type: none"> Gravel Road, Suitable for Passenger Car Dirt Road, Suitable for Passenger Car Road Not Suitable for Passenger Car Closed Road Existing "Unauthorized" Roads Other Existing "Unauthorized" Roads Decommissioned Roads Wildfire Daily Fire Perimeter | <ul style="list-style-type: none"> Completed - Inspected Completed - Ready for Inspection No Repair Needed Other - See Comments Repair Needed Unknown Drop Point | <ul style="list-style-type: none"> Helispot Sling Site Spot Fire Water Source Division Break Roadless Conservation FS Wilderness |
|--|---|---|--|--|

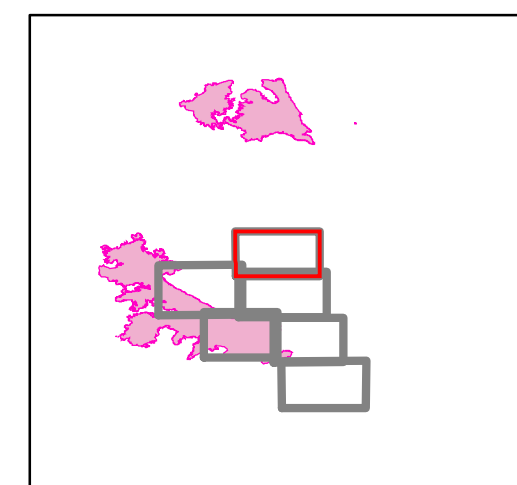


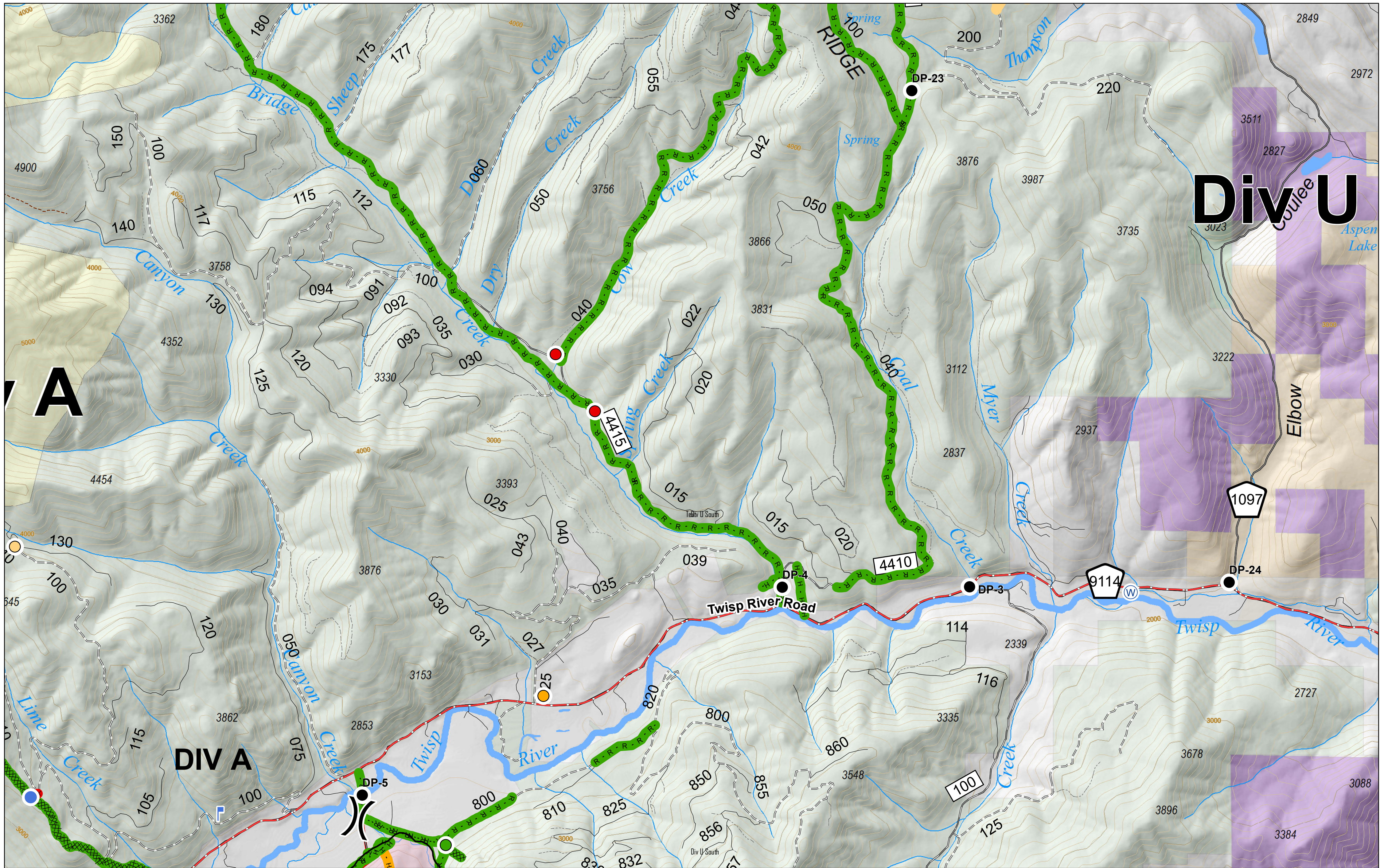


Map Page: **Crescent Mountain Fire**
 2
 9/24/18 WA-OWF-000428
 51,609ac



- | | | | | | |
|----------------------------|-----------------------|---|-----------------------|---------------|-----------------------|
| XXXXX Completed Dozer Line | Repair Status | Gravel Road, Suitable for Passenger Car | Completed - Inspected | Drop Point | Roadless Conservation |
| R - Road as Completed Line | Completed - Inspected | Road Not Suitable for Passenger Car | Repair Needed | Helispot | FS |
| | No Repair Needed | Closed Road | Unknown | Value at Risk | PVT |
| | | Existing "Unauthorized" Roads | | | WA Dept of F&W |
| | | Other Existing "Unauthorized Roads" | | | Washington DNR |
| | | Decommissioned Roads | | | Wilderness |
| | | | | | |





Map Page: **Crescent Mountain Fire**
 3
 9/24/18
WA-OWF-000428
 51,609ac

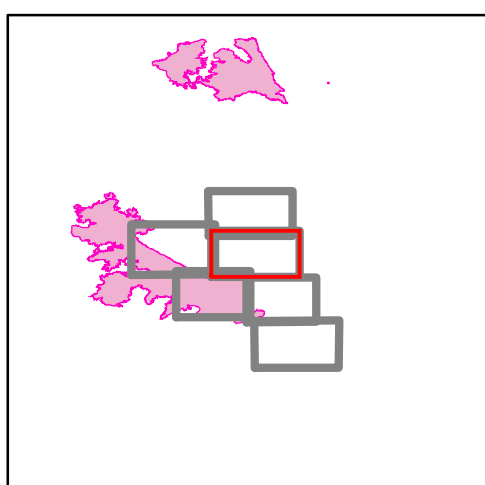


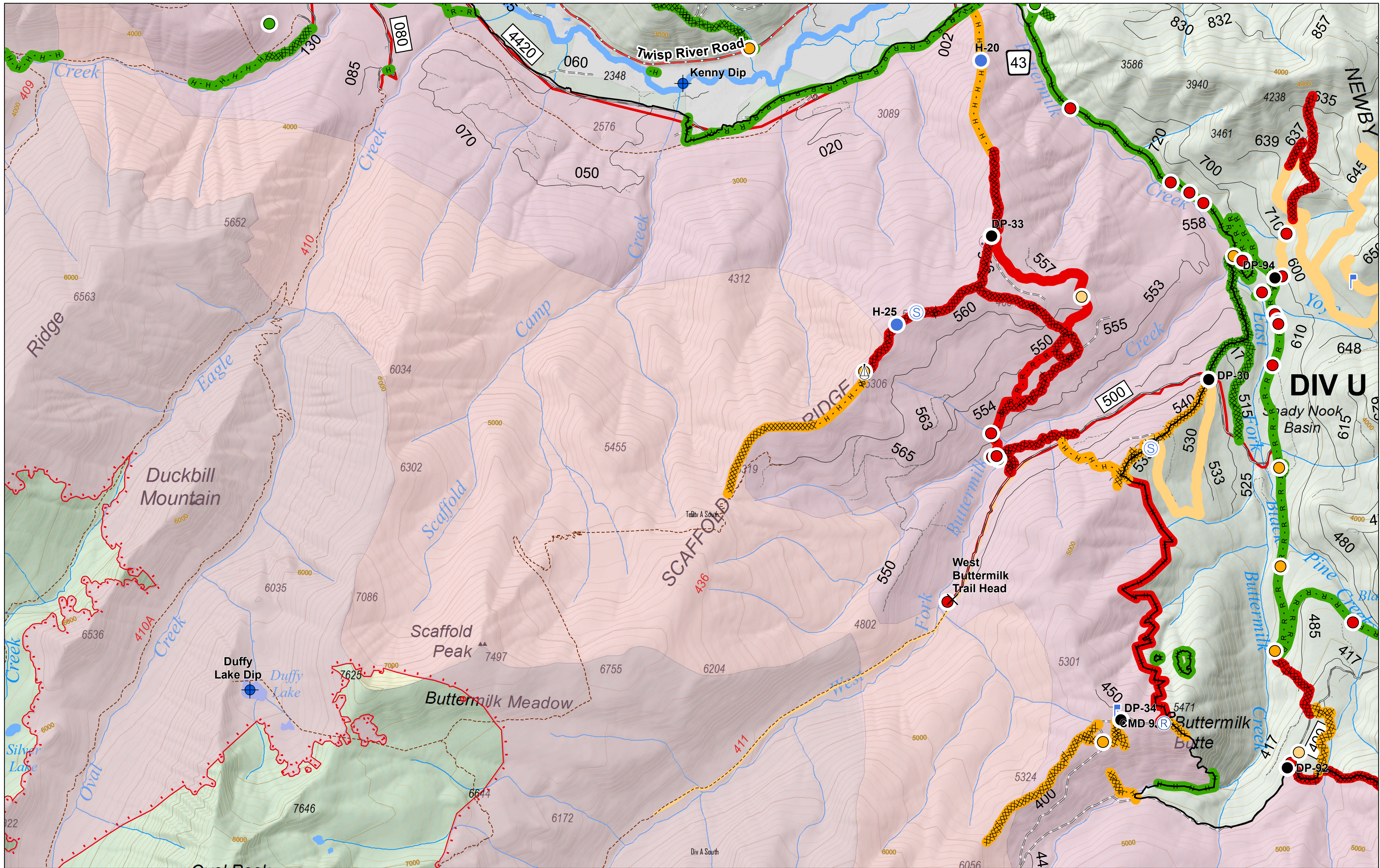
- | | | | | | | |
|--|--|--|--|---|--|--|
| <ul style="list-style-type: none"> — Completed Line XXXX Completed Dozer Line H - Completed Hand Line R - Road as Completed Line Air Tanker Retardant | <p>Repair Status</p> <ul style="list-style-type: none"> Green line: Completed - Inspected Yellow line: Completed - Ready for Inspection Orange line: No Repair Needed Red line: Repair Needed | <ul style="list-style-type: none"> Gravel Road, Suitable for Passenger Car Road Not Suitable for Passenger Car Closed Road Existing "Unauthorized" Roads Other Existing "Unauthorized" Roads Decommissioned Roads Wildfire Daily Fire Perimeter | <ul style="list-style-type: none"> Green circle: Completed - Inspected Yellow circle: Completed - Ready for Inspection Orange circle: No Repair Needed Red circle: Repair Needed Black circle: Drop Point | <ul style="list-style-type: none"> Blue circle: Helispot Blue square: Lookout Blue circle with P: Pump Blue circle with W: Water Source | <ul style="list-style-type: none"> Black line: Division Break | <p>Roadless Conservation</p> <ul style="list-style-type: none"> Light green: FS Light blue: PVT Light purple: USFWS Light orange: WA Dept of F&W Dark purple: Washington DNR |
|--|--|--|--|---|--|--|

Div U

Div A

DIV A

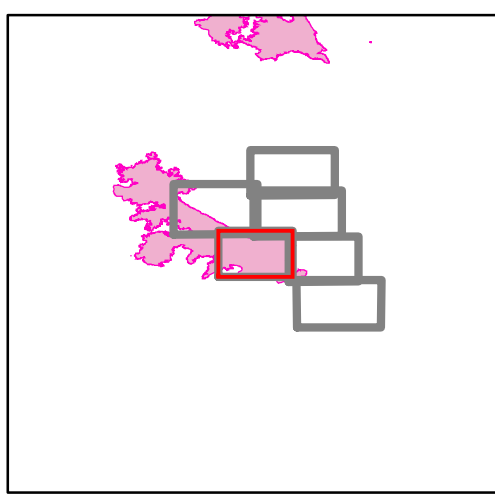


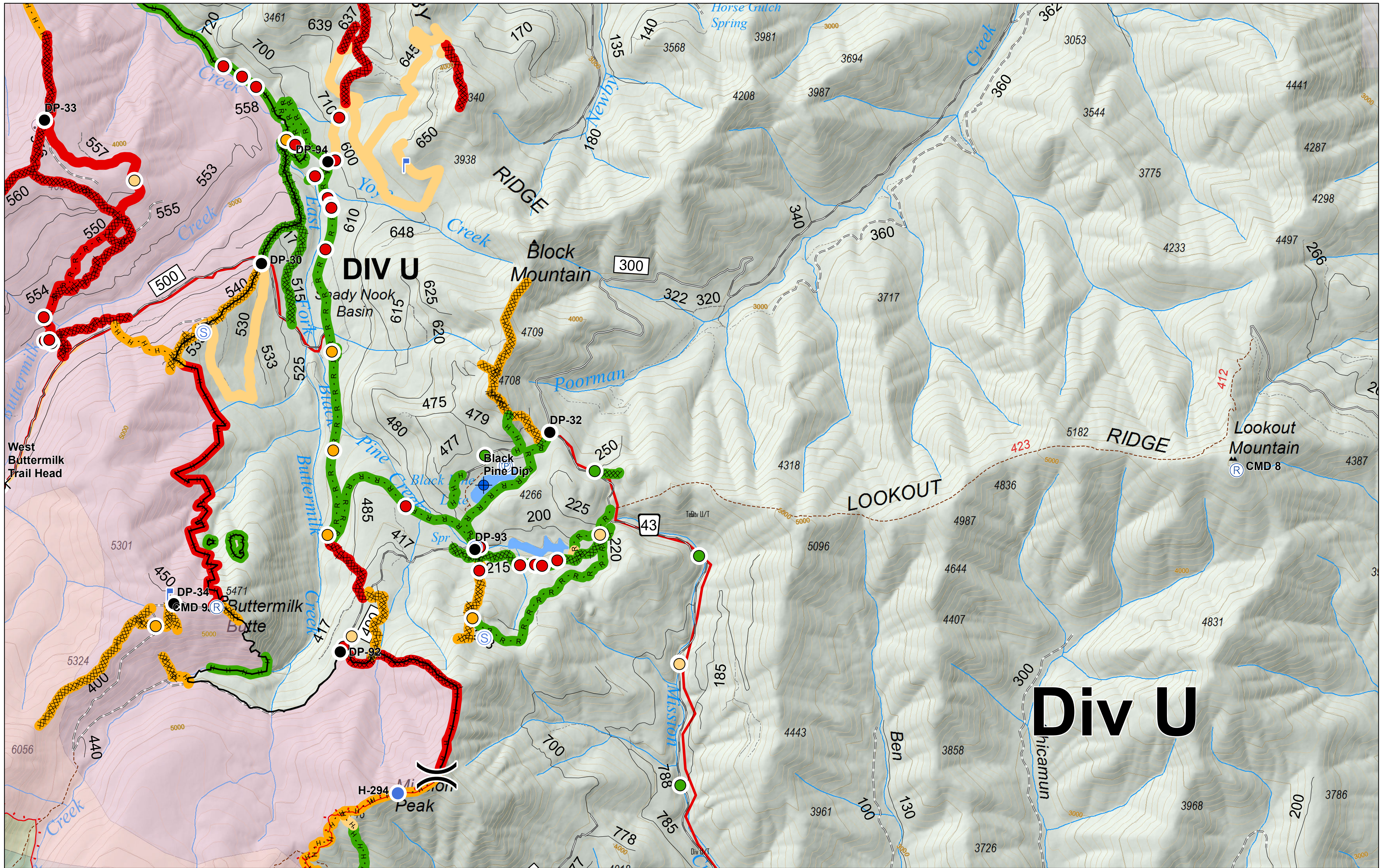


Map Page: **Crescent Mountain Fire**
4
9/24/18
WA-OWF-000428
51,609ac



- | | | | | | |
|---|--|---|--|---|--|
| <ul style="list-style-type: none"> Uncontrolled Fire Edge Completed Line Completed Dozer Line Completed Hand Line Road as Completed Line Air Tanker Retardant | <p>Repair Status</p> <ul style="list-style-type: none"> Completed - Inspected Completed - Ready for Inspection No Repair Needed Repair Needed Unknown Closure | <ul style="list-style-type: none"> Gravel Road, Suitable for Passenger Car Road Not Suitable for Passenger Car Closed Road Existing "Unauthorized" Roads Other Existing "Unauthorized" Roads Decommissioned Roads Wildfire Daily Fire Perimeter | <ul style="list-style-type: none"> Completed - Inspected Completed - Ready for Inspection No Repair Needed Repair Needed Unknown Closure | <ul style="list-style-type: none"> Dip Site Drop Point Helispot Repeater Sling Site Internet Access Lookout | <ul style="list-style-type: none"> Roadless Conservation FS PVT Wilderness |
|---|--|---|--|---|--|





Map Page: **Crescent Mountain Fire**

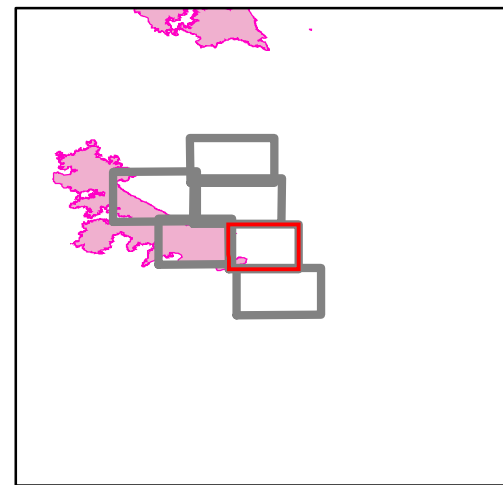
5
9/24/18

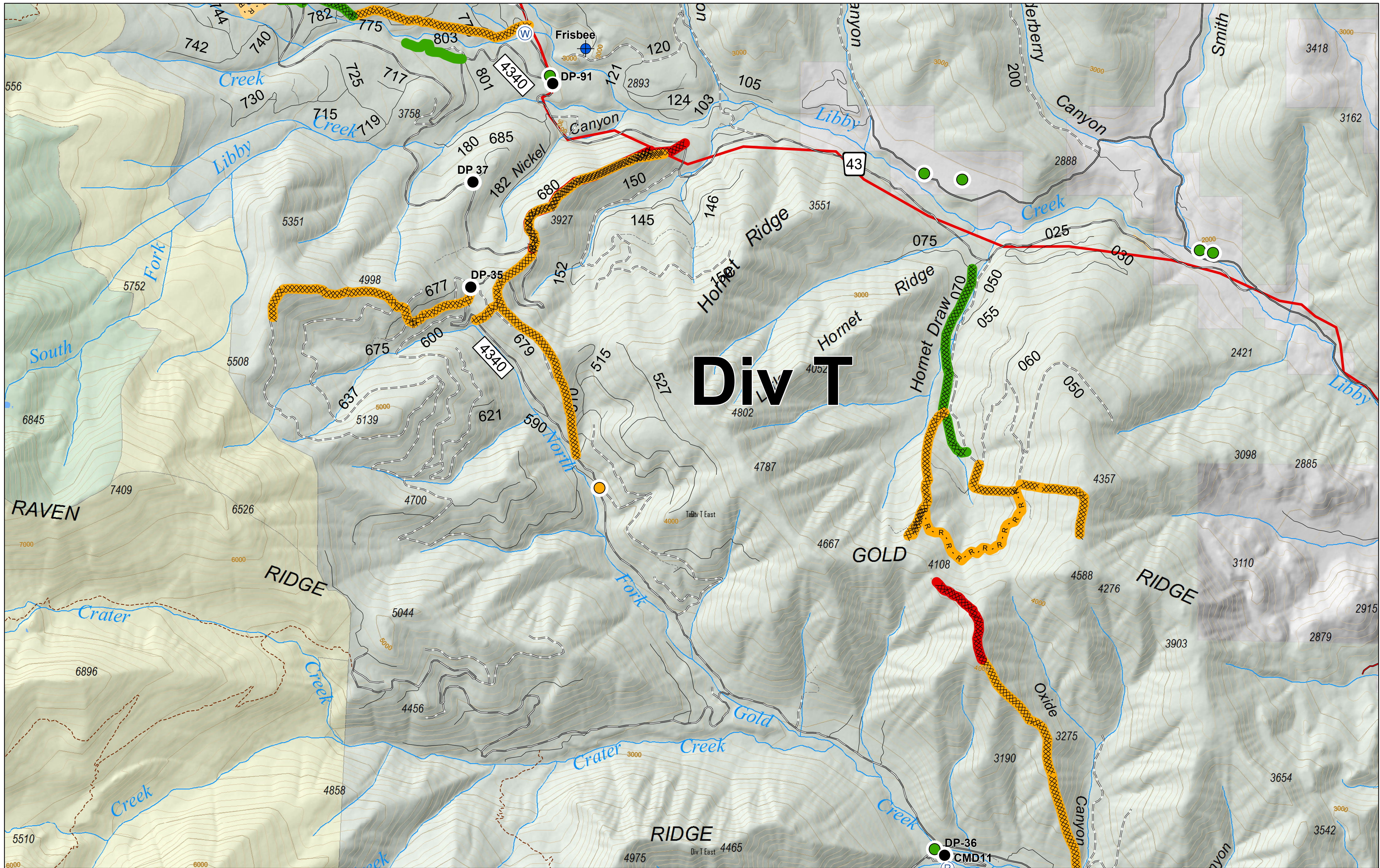
WA-OWF-000428

51,609ac



- | | | | | | | |
|---|--|---|--|--|--|--|
| <ul style="list-style-type: none"> Uncontrolled Fire Edge Completed Line Completed Dozer Line Completed Hand Line Road as Completed Line Aerial Retardant Drop Air Tanker Retardant | <p>Repair Status</p> <ul style="list-style-type: none"> Completed - Inspected Completed - Ready for Inspection No Repair Needed Repair Needed | <ul style="list-style-type: none"> Gravel Road, Suitable for Passenger Car Dirt Road, Suitable for Passenger Car Road Not Suitable for Passenger Car Closed Road Existing "Unauthorized" Roads Other Existing "Unauthorized Roads" Decommissioned Roads Wildfire Daily Fire Perimeter | <ul style="list-style-type: none"> Completed - Inspected Completed - Ready for Inspection No Repair Needed Repair Needed Unknown Closure | <ul style="list-style-type: none"> Dip Site Drop Point Helispot Internet Access Lookout Pump | <ul style="list-style-type: none"> Repeater Staging Area Water Source Division Break | <ul style="list-style-type: none"> Roadless Conservation FS PVT Wilderness |
|---|--|---|--|--|--|--|





Map Page: **Crescent Mountain Fire**
 6
 9/24/18 WA-OWF-000428
 51,609ac



0 0.4 0.8 1.6 Miles



- | | | | | | |
|---------------------------------------|------------------------------------|---|------------------------------------|----------------|-------------------------|
| XXXXX Completed Dozer Line | Repair Status | Gravel Road, Suitable for Passenger Car | ● Completed - Inspected | ● Drop Point | □ Roadless Conservation |
| R - Road as Completed Line | ● Completed - Inspected | Dirt Road, Suitable for Passenger Car | ● Completed - Ready for Inspection | Ⓡ Repeater | □ FS |
| — Road Not Suitable for Passenger Car | ● Completed - Ready for Inspection | — Road Not Suitable for Passenger Car | ● No Repair Needed | Ⓜ Water Source | □ PVT |
| — Closed Road | ● No Repair Needed | — Existing "Unauthorized" Roads | ● Repair Needed | □ Wilderness | |
| — Air Tanker Retardant | ● Repair Needed | — Other Existing "Unauthorized" Roads | ● Dip Site | | |

