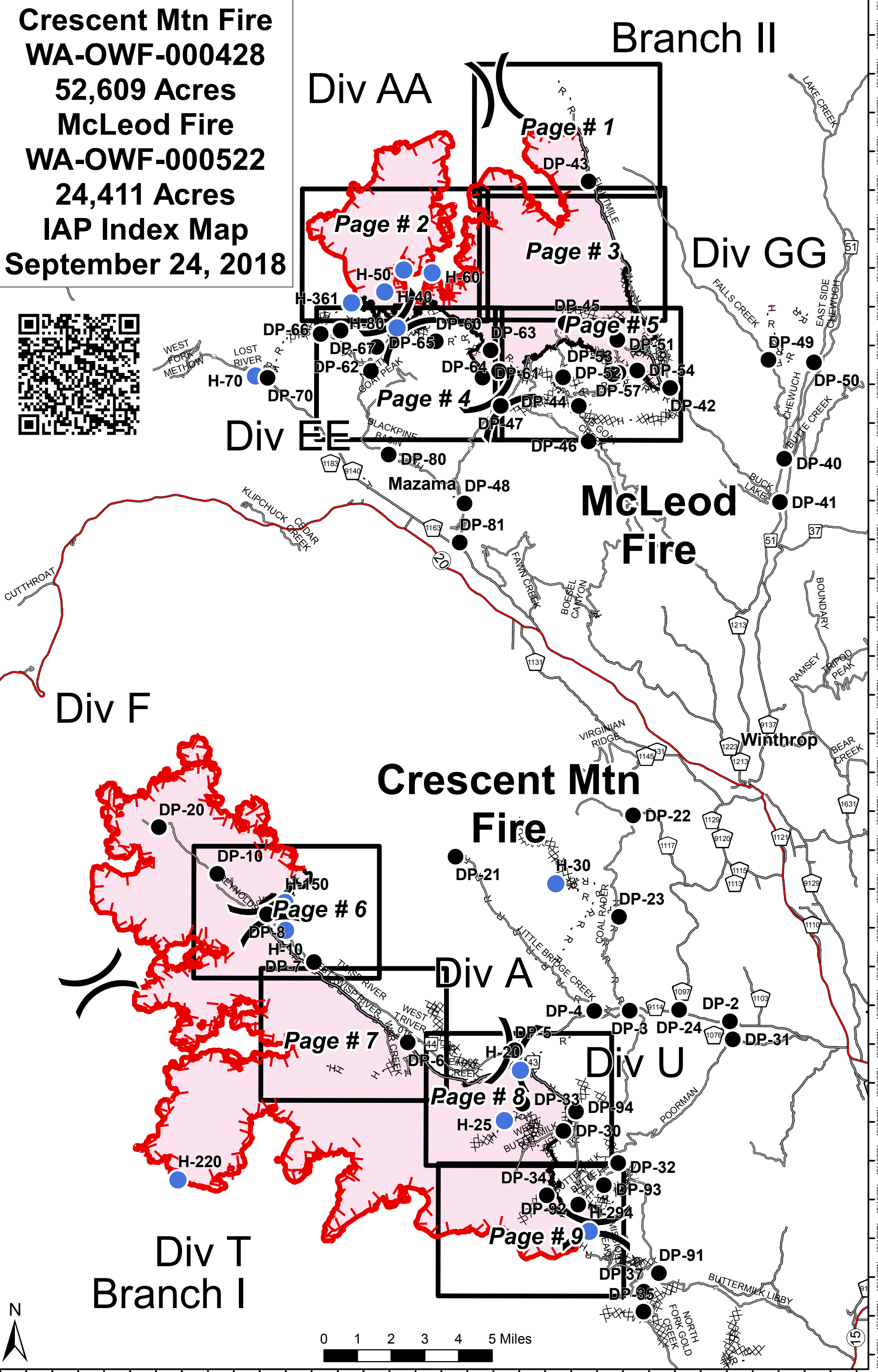
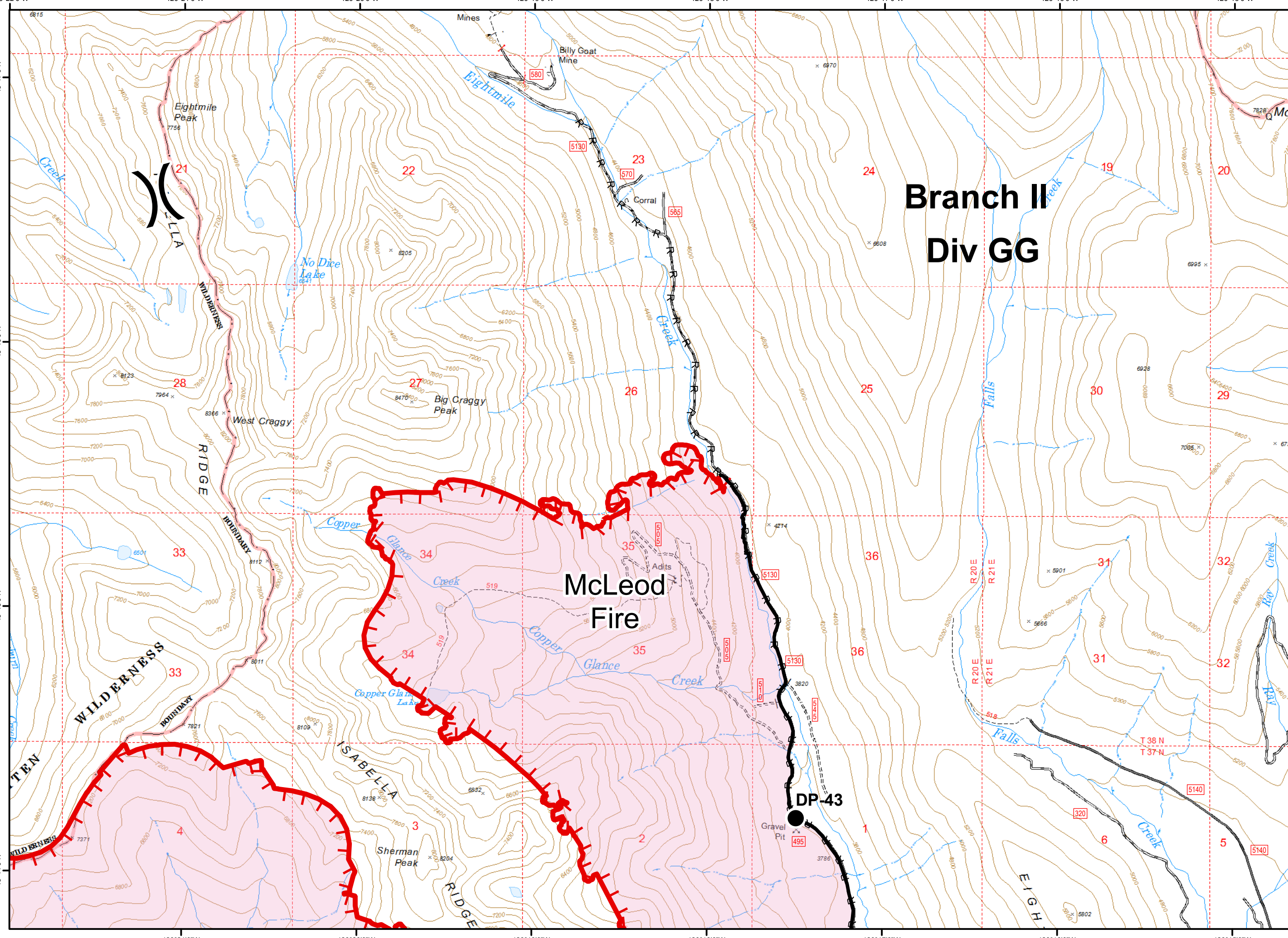
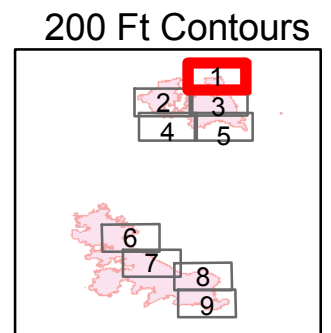


**Crescent Mtn Fire**  
**WA-OWF-000428**  
**52,609 Acres**  
**McLeod Fire**  
**WA-OWF-000522**  
**24,411 Acres**  
**IAP Index Map**  
**September 24, 2018**





● Drop Point

⌋ Division Break

▬ Uncontrolled Fire Edge

▬ Completed Line

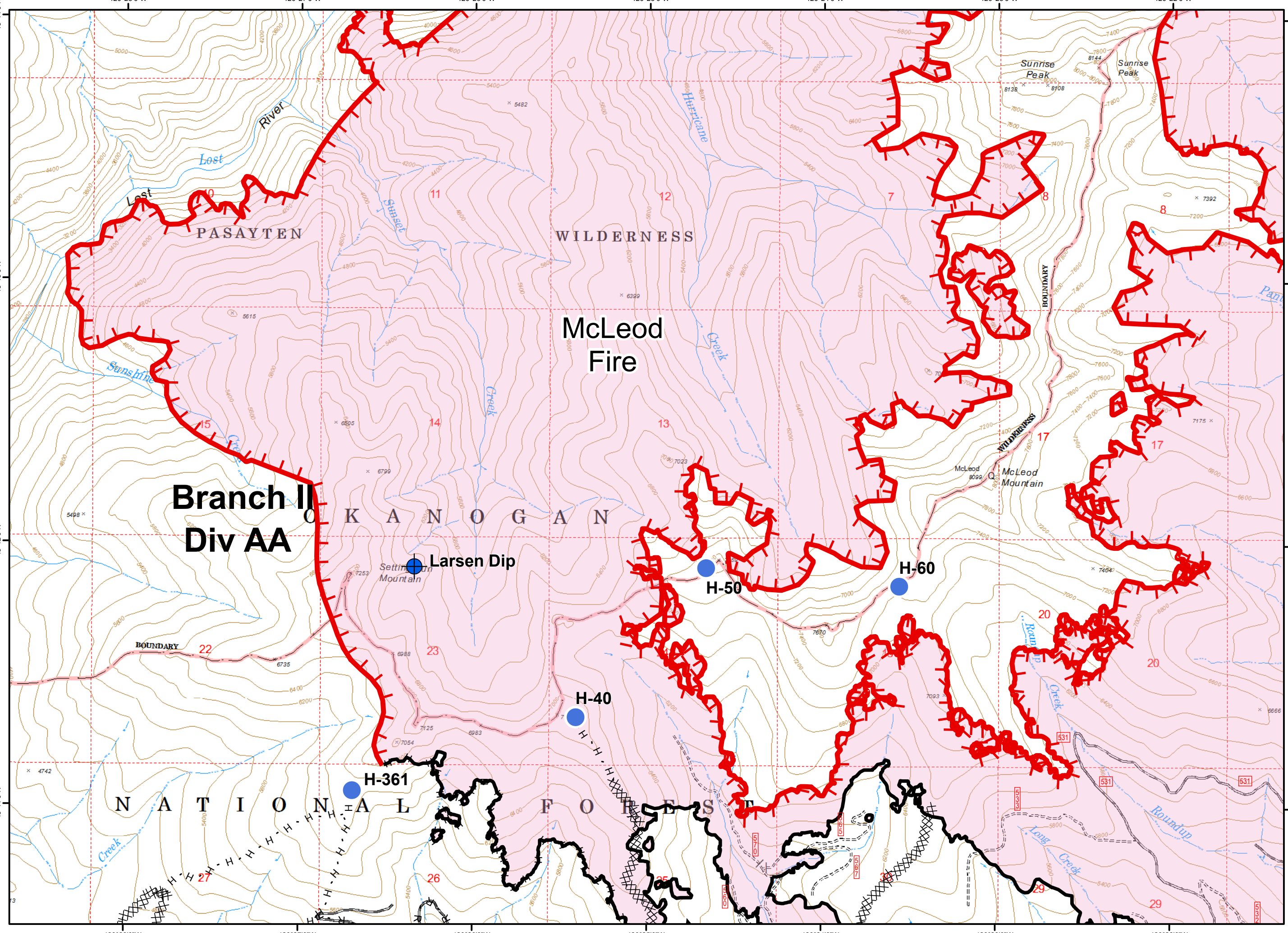
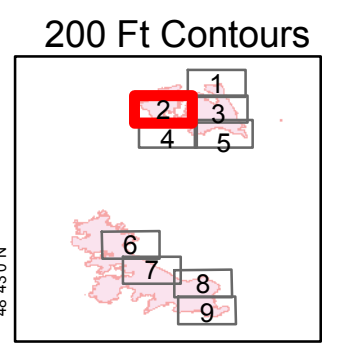
R - Road as Completed Line

▭ Wildfire Daily Fire Perimeter

Updated 9/23/2018 1:17:28 PM  
- PNW2 GISS

Miles  
0 0.25 0.5

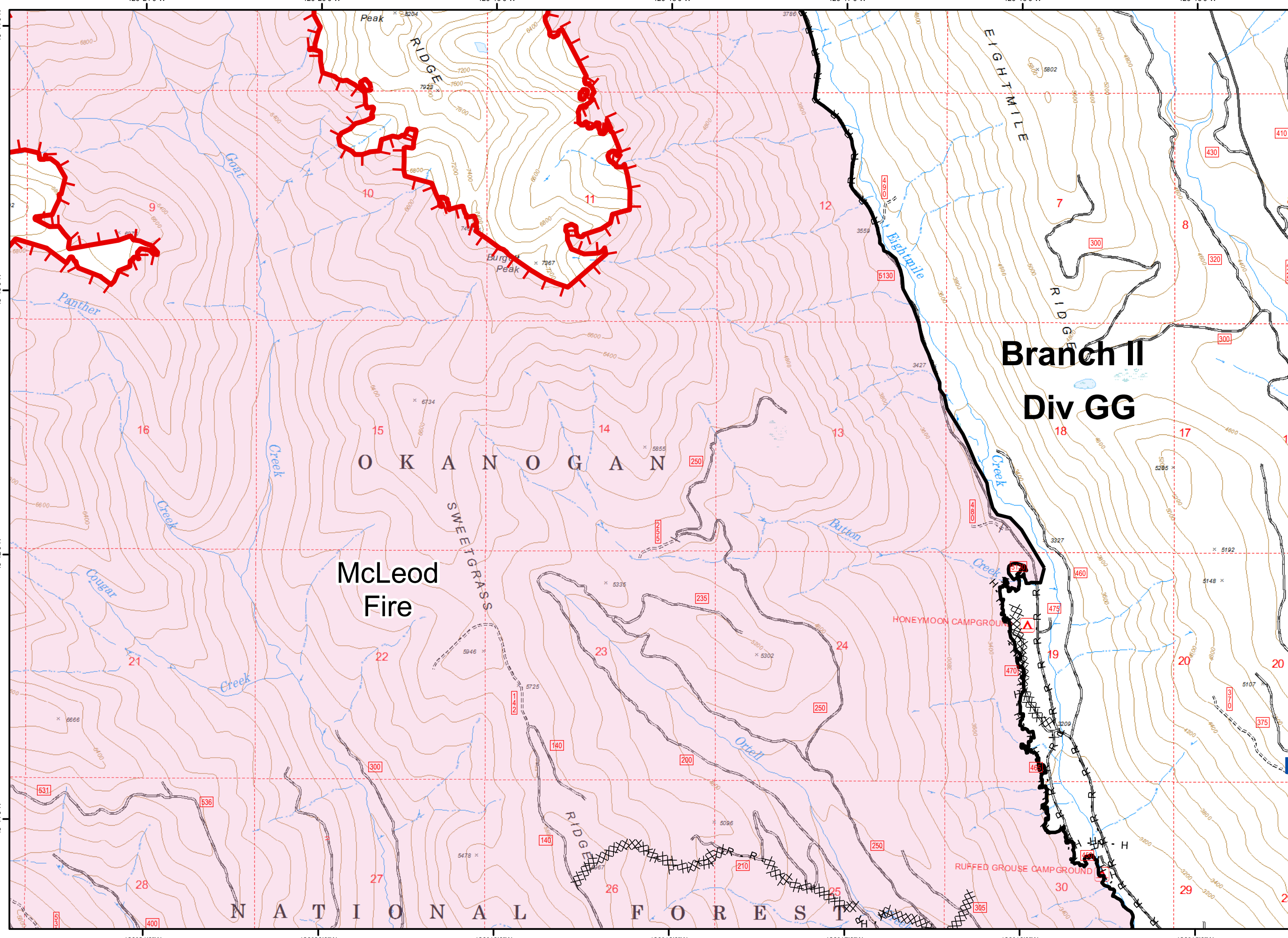
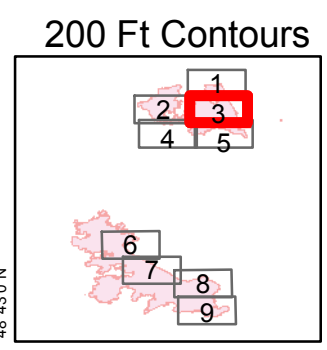
N



- Dip Site
- Helispot
- Division Break
- Uncontrolled Fire Edge
- Completed Line
- Completed Dozer Line
- Completed Hand Line
- Road as Completed Line
- Wildfire Daily Fire Perimeter

Updated 9/23/2018 1:17:28 PM  
 - PNW2 GISS

Miles  
 0 0.25 0.5

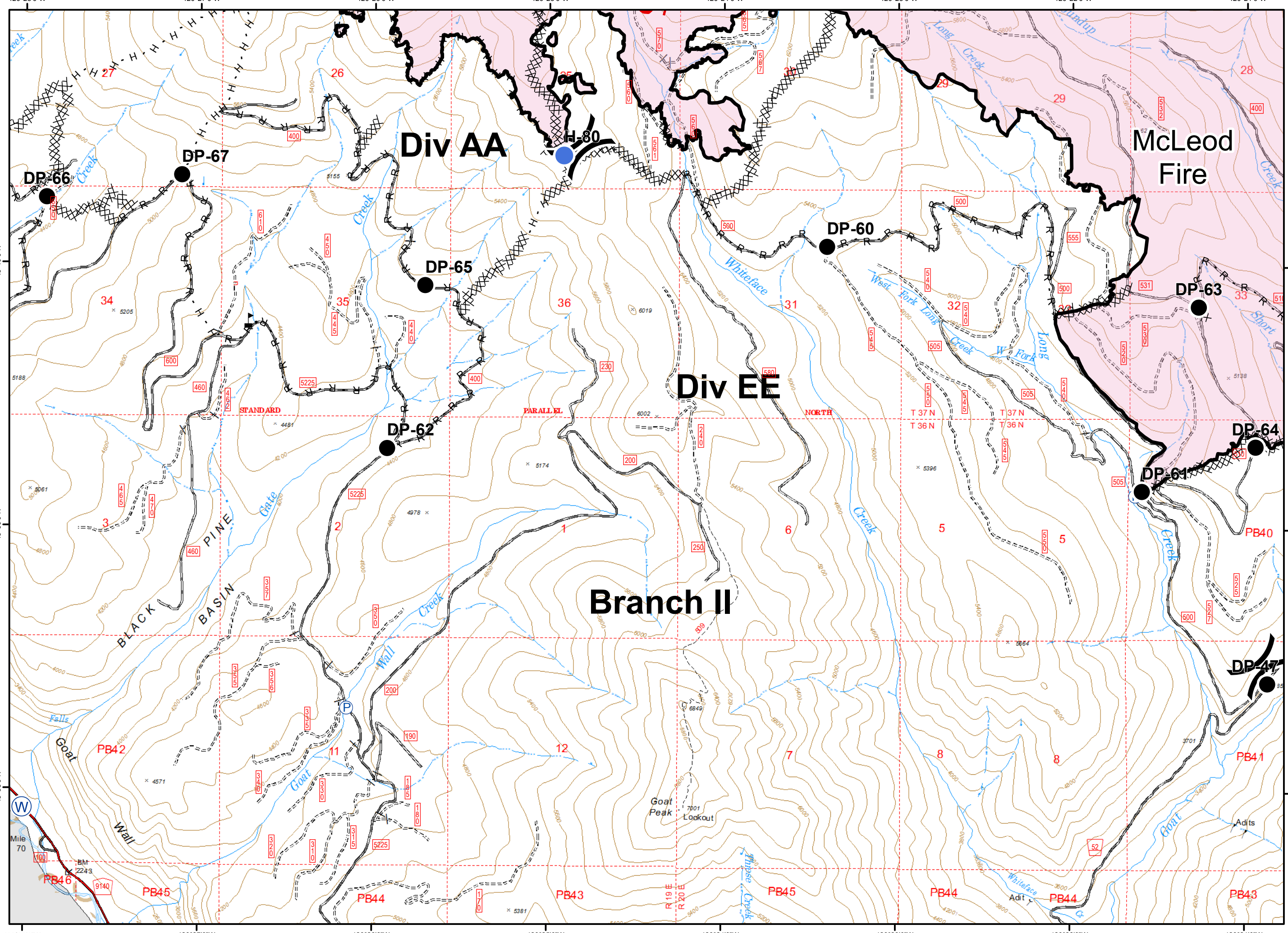
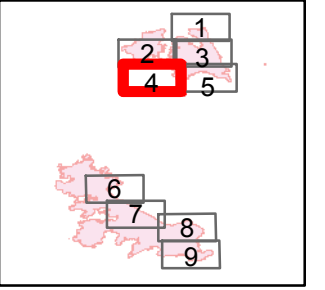


- Drop Point
- Mobile Weather Unit
- Uncontrolled Fire Edge
- Completed Line
- Completed Dozer Line
- Completed Hand Line
- Road as Completed Line
- Wildfire Daily Fire Perimeter

Updated 9/23/2018 1:17:28 PM  
 - PNW2 GISS

Miles  
 0 0.25 0.5

200 Ft Contours



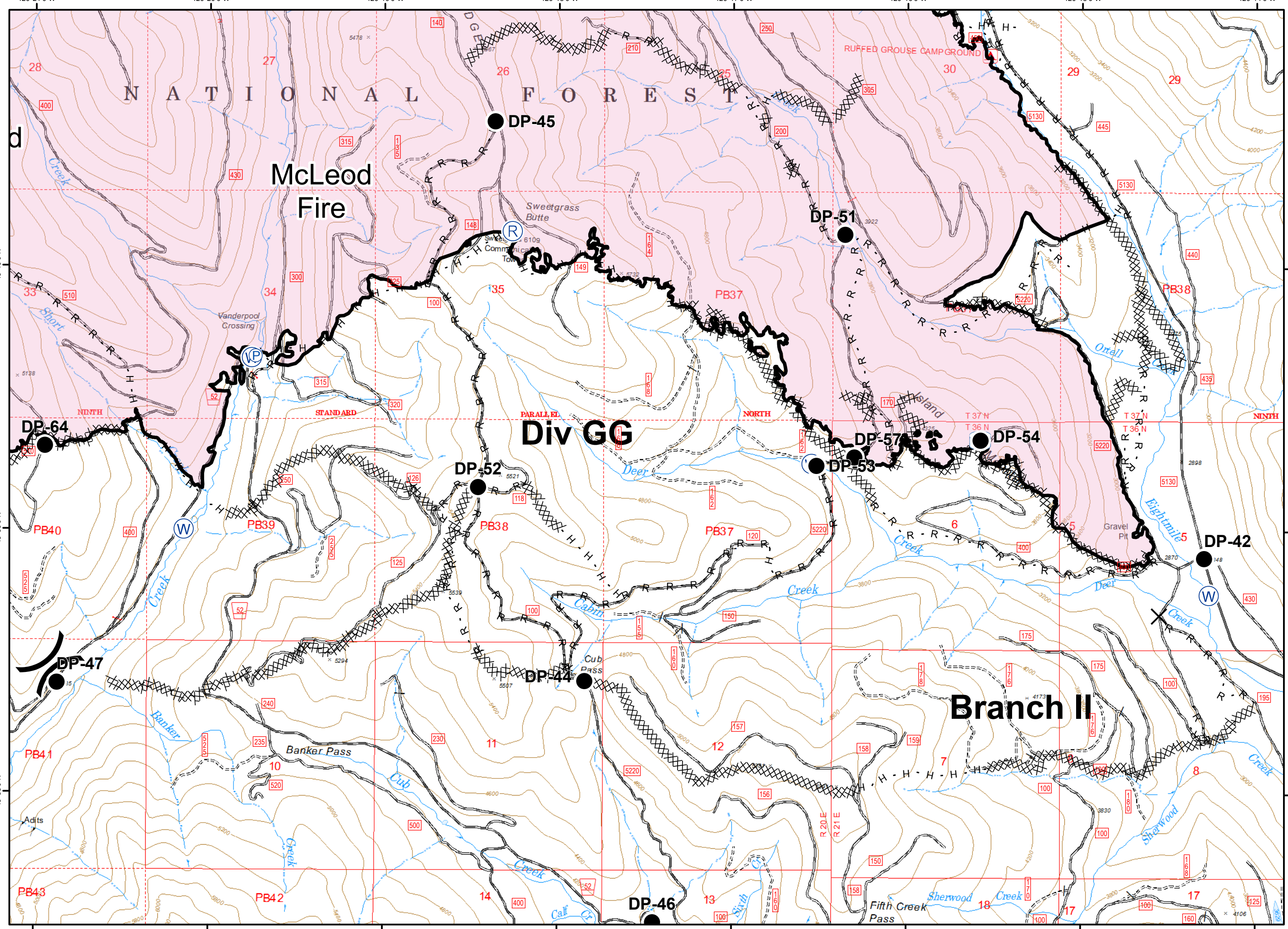
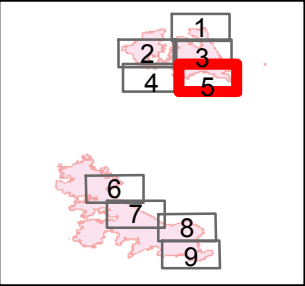
- Drop Point
- Helispot
- Pump
- Water Source
- Value at Risk
- Division Break

- Uncontrolled Fire Edge
- Completed Line
- Completed Dozer Line
- Completed Hand Line
- Road as Completed Line
- Wildfire Daily Fire Perimeter

Updated 9/23/2018 1:17:28 PM  
 - PNW2 GISS

Miles  
 0 0.25 0.5

200 Ft Contours

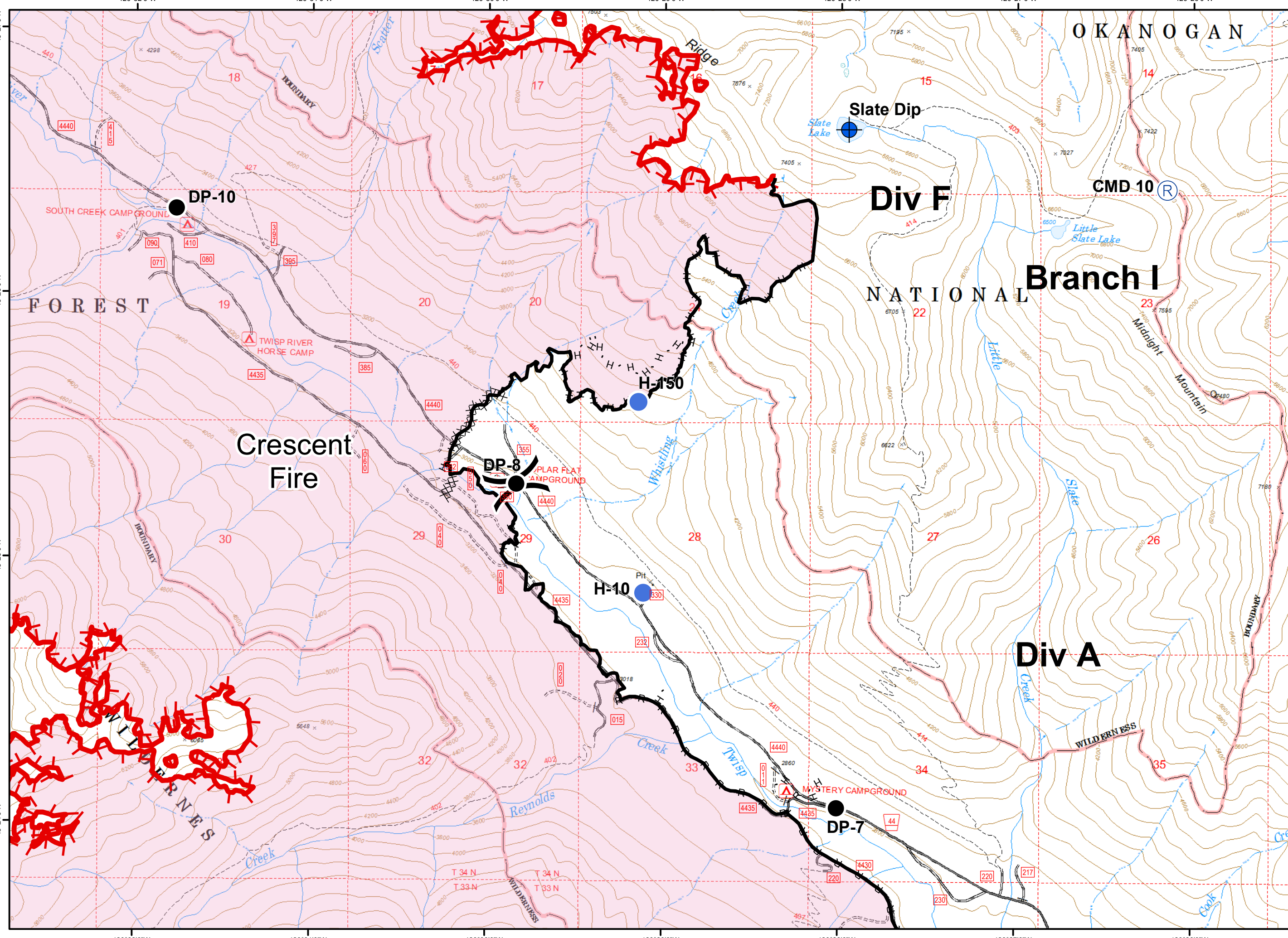
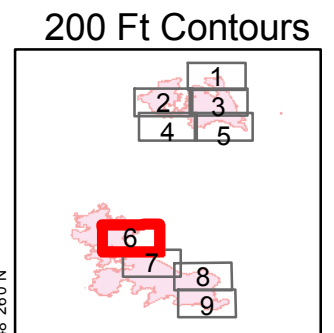


- ✕ Closure
- Drop Point
- Ⓟ Pump
- Ⓡ Repeater
- Ⓜ Water Source
- Ⓜ Water Tank
- ⎵ Division Break

- Completed Line
- XXXX Completed Dozer Line
- H - Completed Hand Line
- R - Road as Completed Line
- Wildfire Daily Fire Perimeter

Updated 9/23/2018 1:17:28 PM  
 - PNW2 GISS

Miles  
 0 0.25 0.5



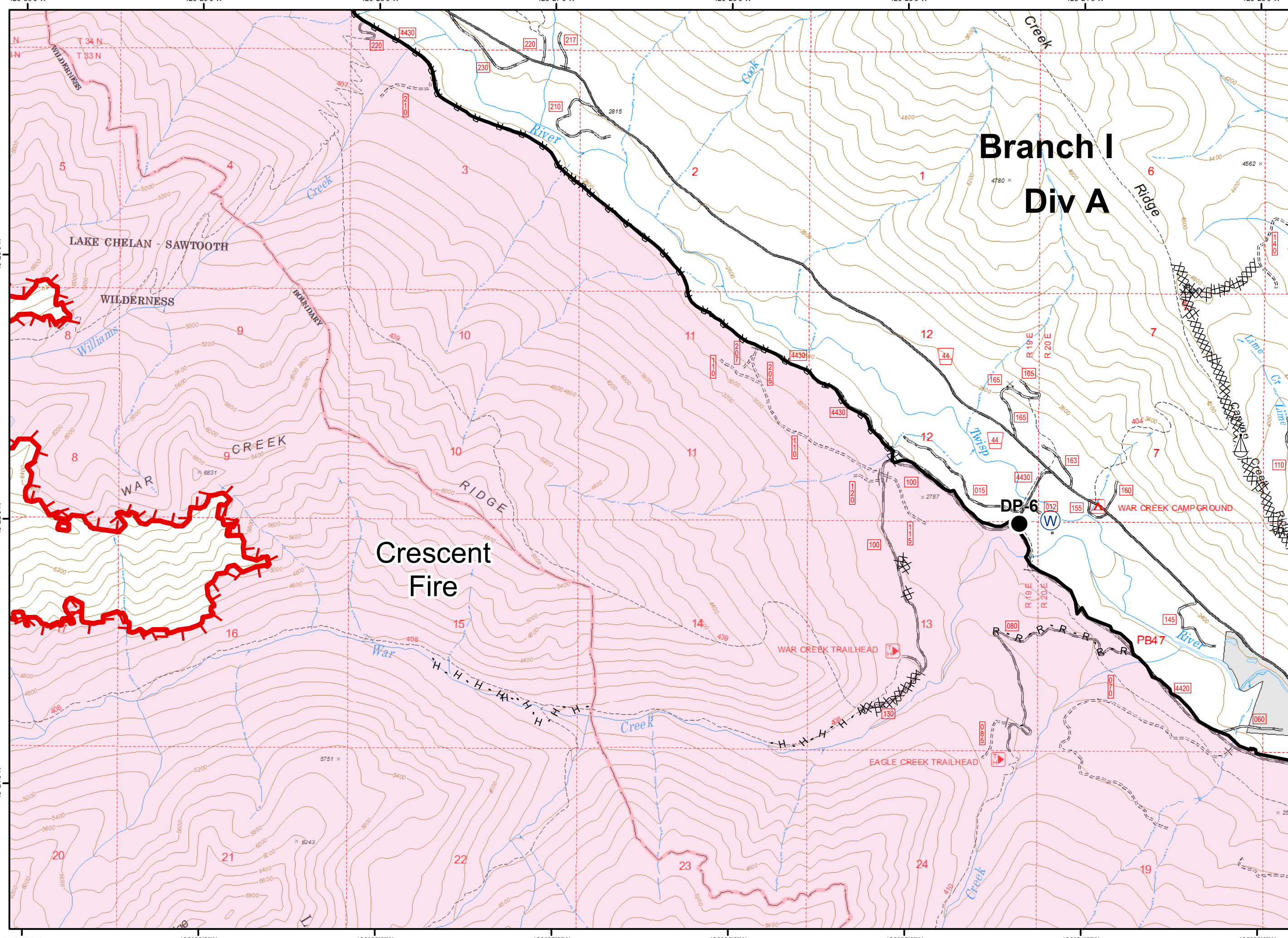
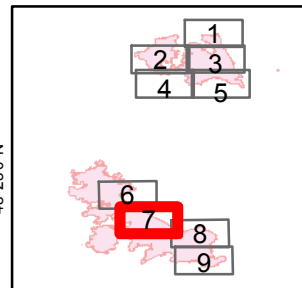
- Dip Site
- Drop Point
- Helispot
- Repeater
- Division Break

- Uncontrolled Fire Edge
- Completed Line
- Completed Dozer Line
- Completed Hand Line
- Road as Completed Line
- Wildfire Daily Fire Perimeter

Updated 9/23/2018 1:17:28 PM  
- PNW2 GISS

Miles  
0 0.25 0.5

200 Ft Contours



# Branch I Div A

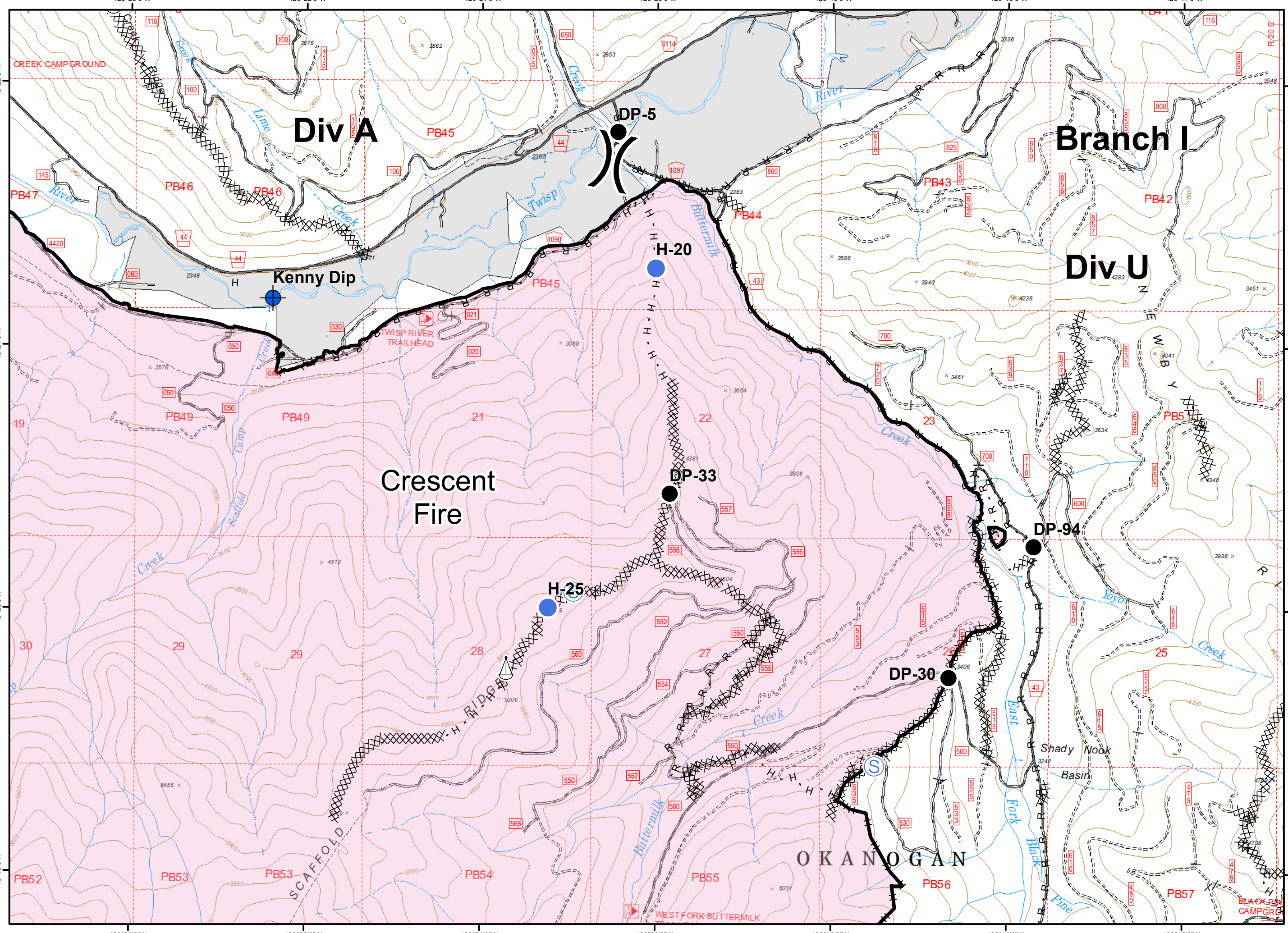
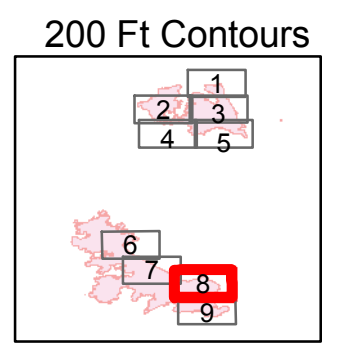
## Crescent Fire

- Drop Point
- Sling Site
- Water Source
- Uncontrolled Fire Edge
- Completed Line
- Completed Dozer Line
- Completed Hand Line
- Road as Completed Line
- Wildfire Daily Fire Perimeter

Updated 9/23/2018 1:17:28 PM  
 - PNW2 GISS

Miles  
 0 0.25 0.5





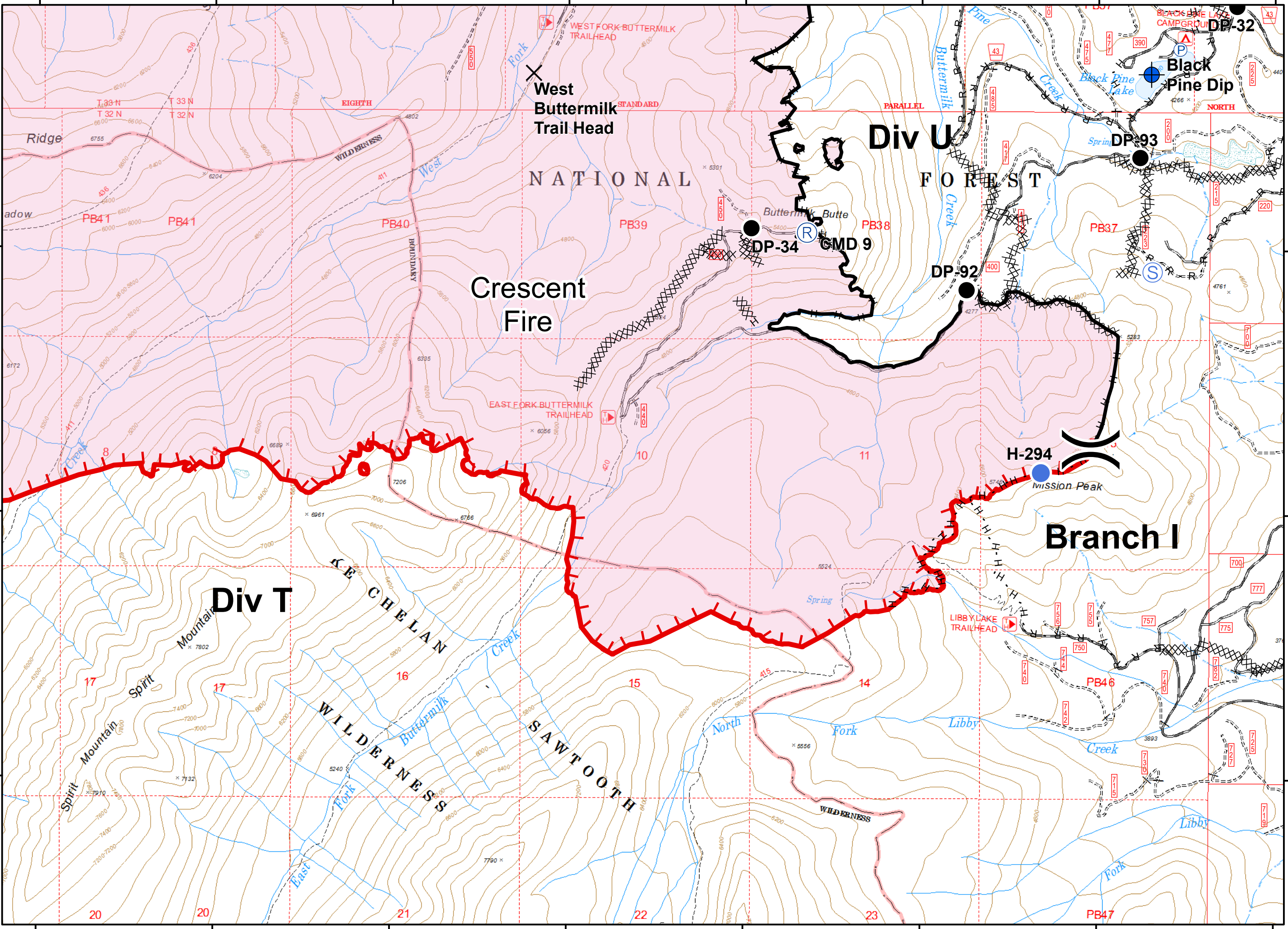
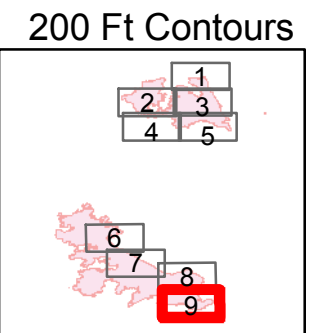
- Dip Site
- Drop Point
- Helisport
- Sling Site
- Staging Area
- Division Break

- Completed Line
- Completed Dozer Line
- H - Completed Hand Line
- R - Road as Completed Line
- Wildfire Daily Fire Perimeter

Updated 9/23/2018 1:17:28 PM  
 - PNW2 GISS

Miles  
 0 0.25 0.5

A north arrow points upwards. Below it is a scale bar showing 0, 0.25, and 0.5 miles.



- X Closure
- Dip Site
- Drop Point
- Helispot
- P Pump
- R Repeater
- S Staging Area
- ) Division Break
- Uncontrolled Fire Edge
- Completed Line
- Completed Dozer Line
- H - Completed Hand Line
- R - Road as Completed Line
- Wildfire Daily Fire Perimeter