
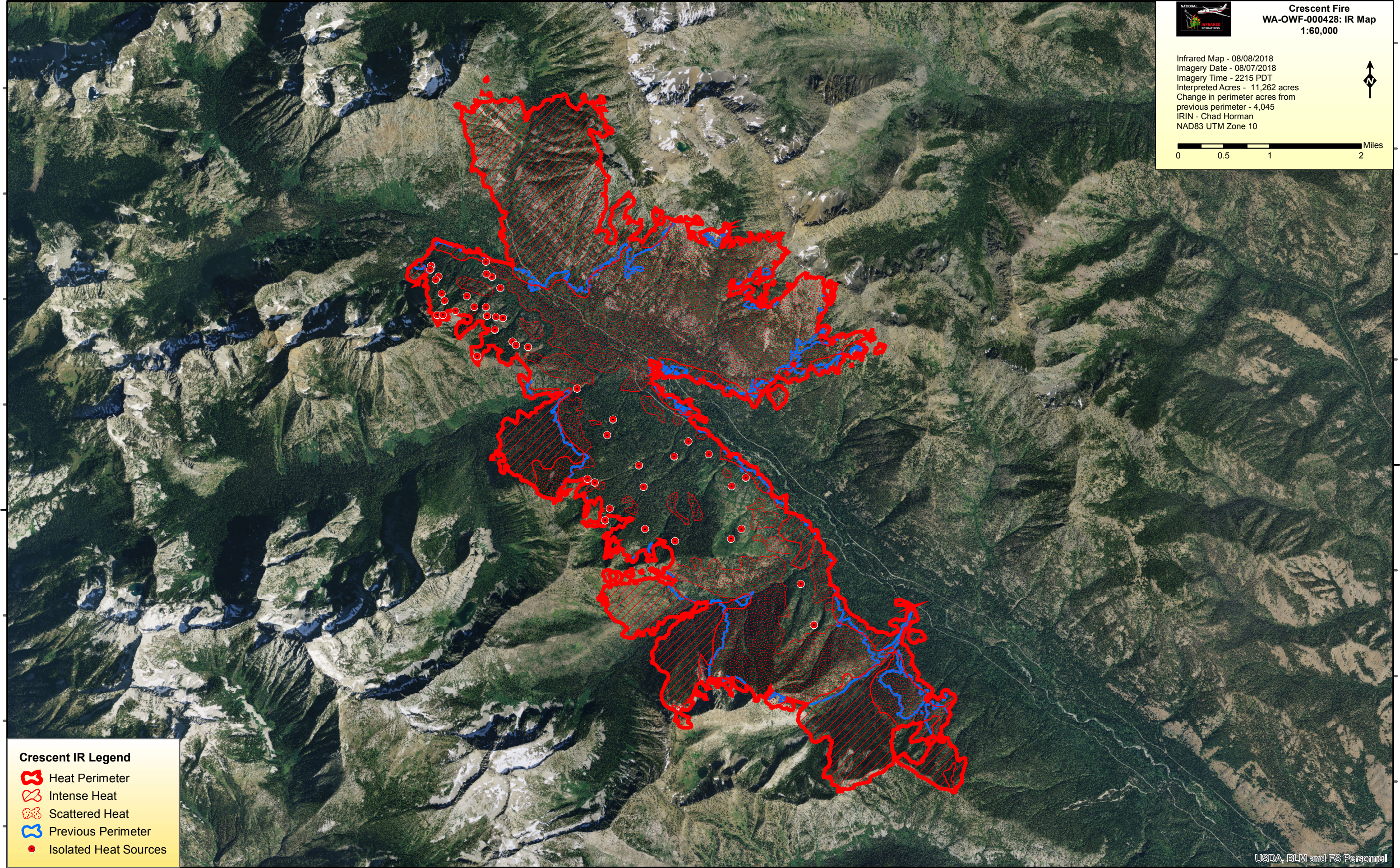


120°40'0"W 120°35'0"W 120°30'0"W 120°25'0"W

**Crescent Fire**  
**WA-OWF-000428: IR Map**  
**1:60,000**

Infrared Map - 08/08/2018  
 Imagery Date - 08/07/2018  
 Imagery Time - 2215 PDT  
 Interpreted Acres - 11,262 acres  
 Change in perimeter acres from  
 previous perimeter - 4,045  
 IRIN - Chad Horman  
 NAD83 UTM Zone 10






0 0.5 1 2 Miles

48°25'0"N

48°25'0"N

**Crescent IR Legend**

-  Heat Perimeter
-  Intense Heat
-  Scattered Heat
-  Previous Perimeter
-  Isolated Heat Sources

120°40'0"W 120°35'0"W 120°30'0"W 120°25'0"W