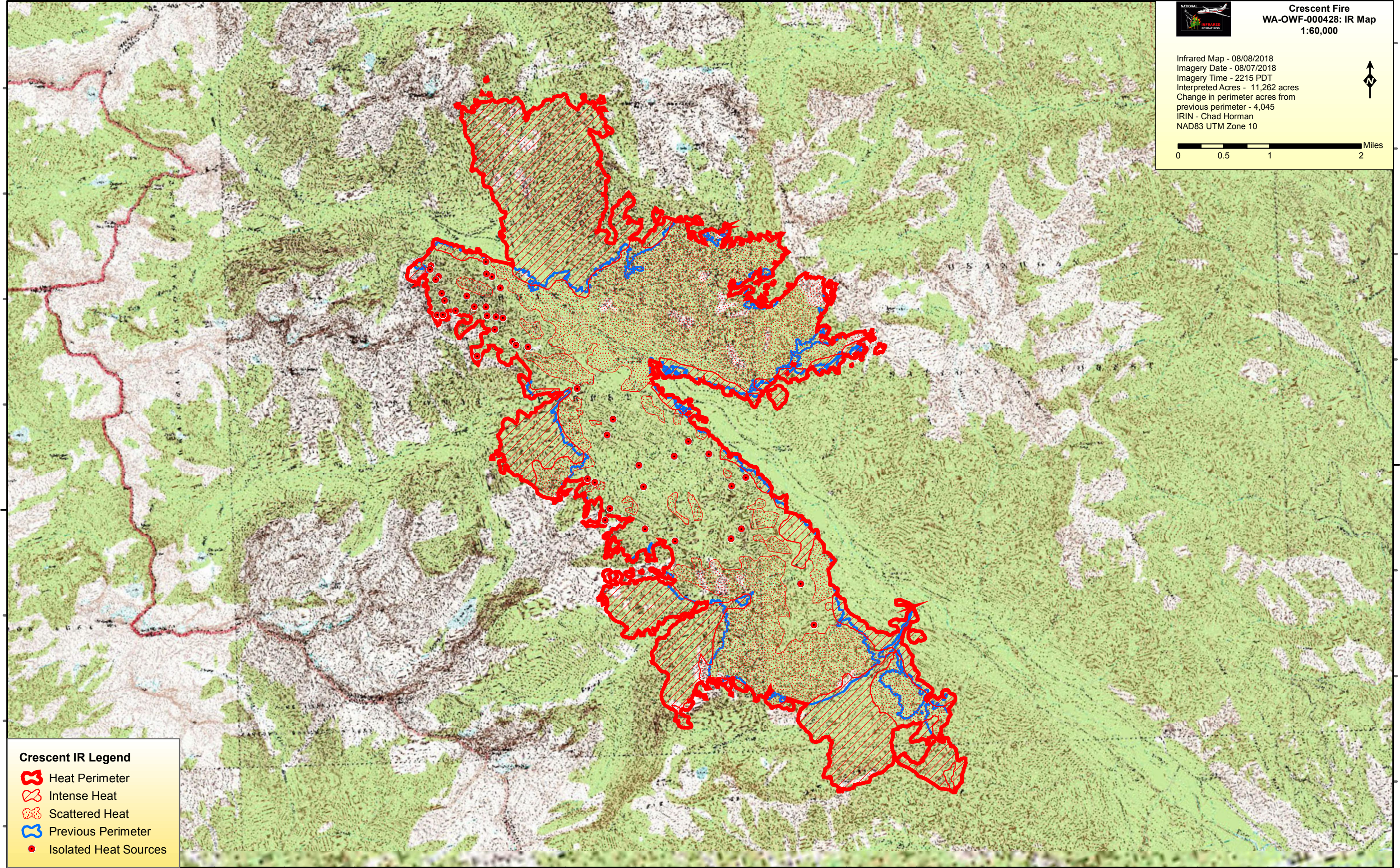
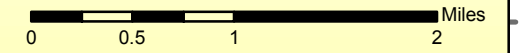


120°40'0"W 120°35'0"W 120°30'0"W 120°25'0"W



Crescent Fire
WA-OWF-000428: IR Map
1:60,000

Infrared Map - 08/08/2018
Imagery Date - 08/07/2018
Imagery Time - 2215 PDT
Interpreted Acres - 11,262 acres
Change in perimeter acres from
previous perimeter - 4,045
IRIN - Chad Horman
NAD83 UTM Zone 10



48°25'0"N

48°25'0"N

Crescent IR Legend

- Heat Perimeter
- Intense Heat
- Scattered Heat
- Previous Perimeter
- Isolated Heat Sources

120°40'0"W 120°35'0"W 120°30'0"W 120°25'0"W