

120°35'0"W

120°30'0"W

120°25'0"W

48°30'0"N

48°30'0"N

48°25'0"N

48°25'0"N

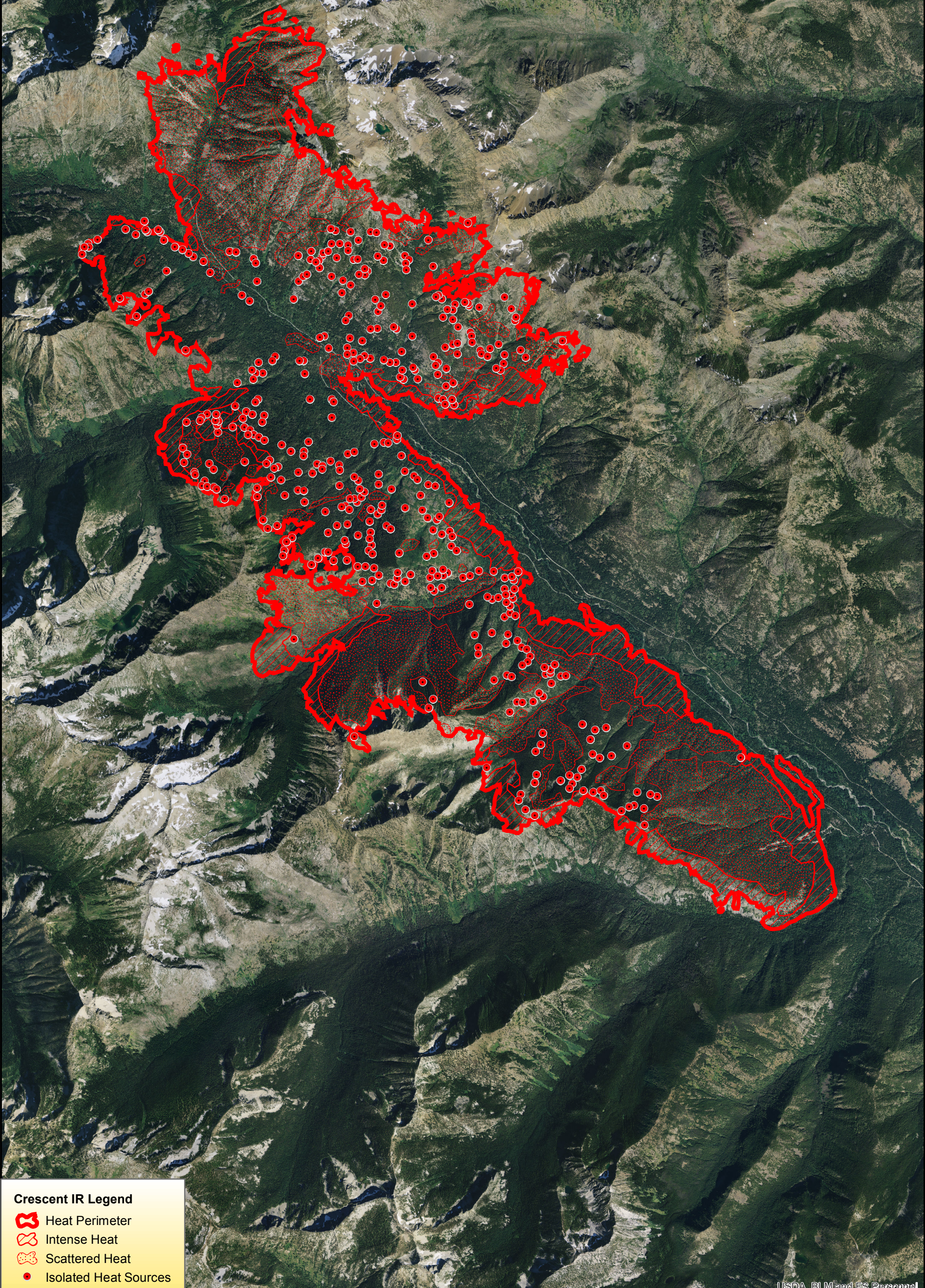
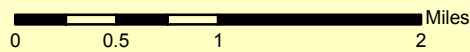
48°20'0"N

48°20'0"N







Crescent Fire
WA-OWF-000428: IR Map
1:60,000

Infrared Map - 08/10/2018
Imagery Date - 08/09/2018
Imagery Time - 2200 PDT
Interpreted Acres - 15,091 acres
Change in perimeter acres from
previous perimeter - 498 acres
IRIN - Chad Horman
NAD83 USFS R6 Albers (Meters)



Crescent IR Legend

-  Heat Perimeter
-  Intense Heat
-  Scattered Heat
-  Isolated Heat Sources

120°35'0"W

120°30'0"W

120°25'0"W