

120°35'0"W

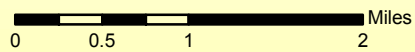
120°30'0"W

120°25'0"W



### Crescent Fire (Perimeter) WA-OWF-000428: IR Map 1:70,000

Infrared Map - 08/19/2018  
Imagery Date - 08/18/2018  
Imagery Time - 1949 PDT  
Interpreted Acres - 24,983 acres  
Change in perimeter acres from  
previous perimeter - 5,212 acres  
IRIN - Chad Horman  
NAD83 USFS R6 Albers (Meters)



48°30'0"N

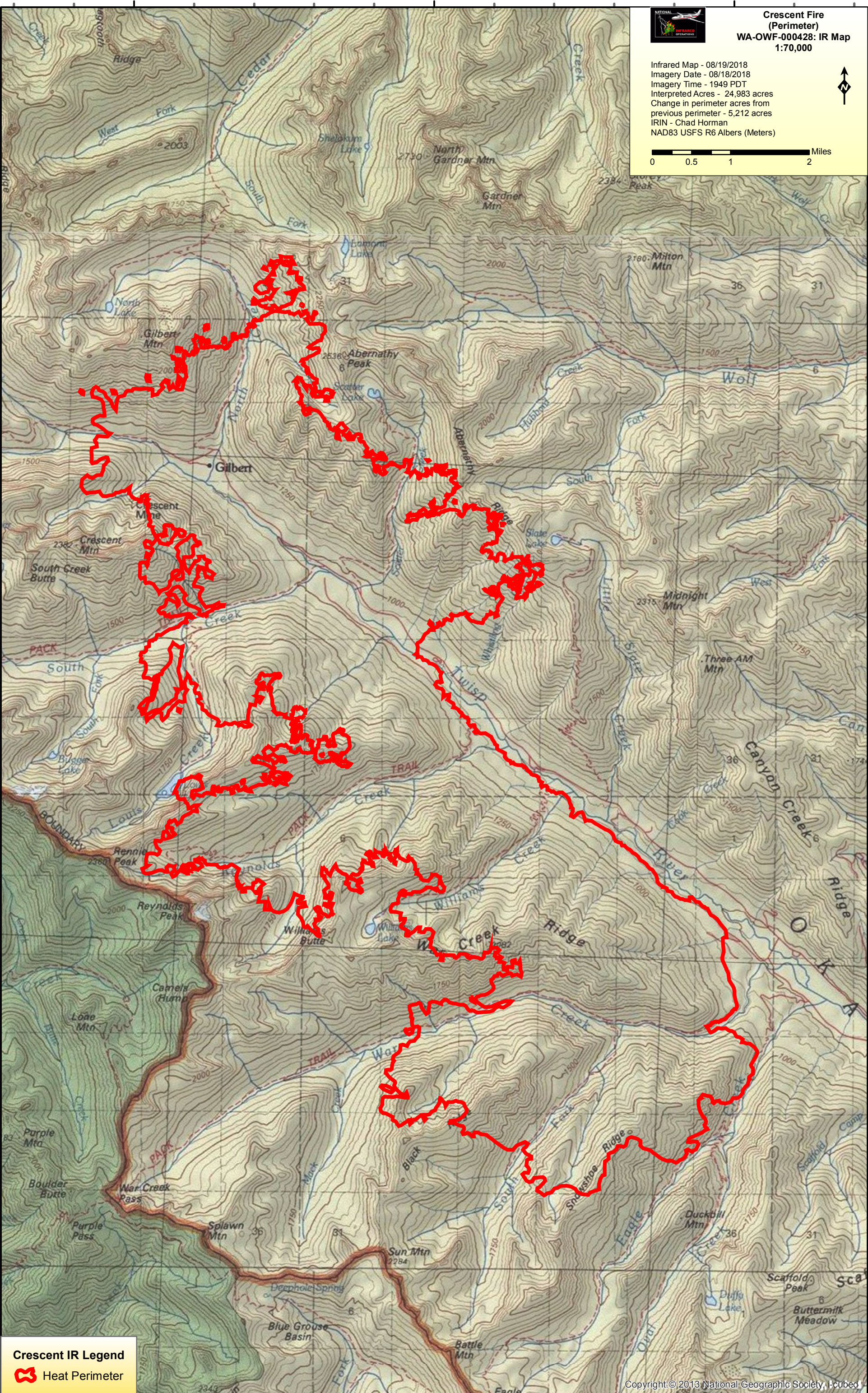
48°30'0"N

48°25'0"N

48°25'0"N

48°20'0"N

48°20'0"N



#### Crescent IR Legend

Heat Perimeter

120°35'0"W

120°30'0"W

120°25'0"W