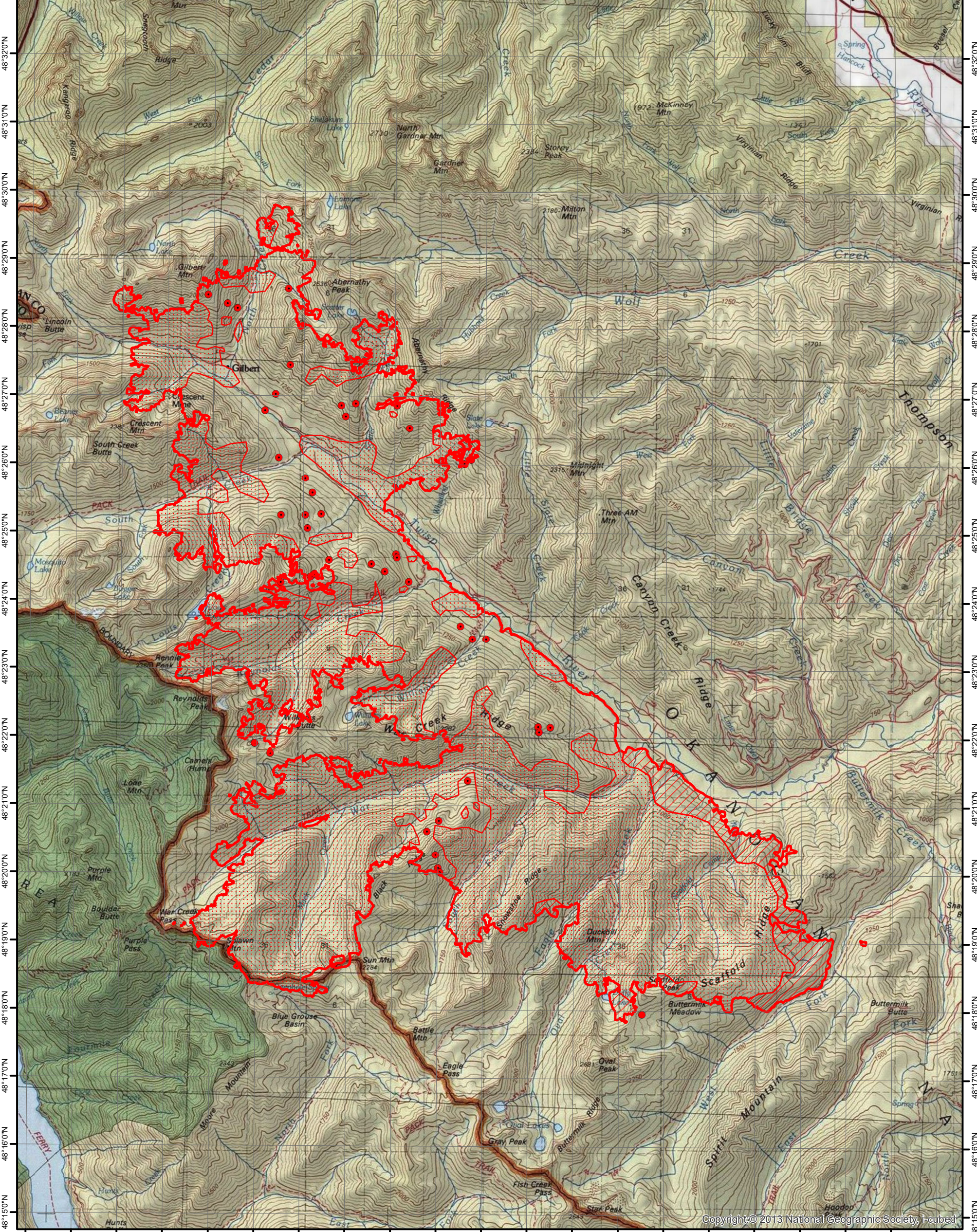


120°38'0"W 120°37'0"W 120°36'0"W 120°35'0"W 120°34'0"W 120°33'0"W 120°32'0"W 120°31'0"W 120°30'0"W 120°29'0"W 120°28'0"W 120°27'0"W 120°26'0"W 120°25'0"W 120°24'0"W 120°23'0"W 120°22'0"W 120°21'0"W 120°20'0"W 120°19'0"W 120°18'0"W







120°38'0"W 120°37'0"W 120°36'0"W 120°35'0"W 120°34'0"W 120°33'0"W 120°32'0"W 120°31'0"W 120°30'0"W 120°29'0"W 120°28'0"W 120°27'0"W 120°26'0"W 120°25'0"W 120°24'0"W 120°23'0"W 120°22'0"W 120°21'0"W 120°20'0"W 120°19'0"W 120°18'0"W

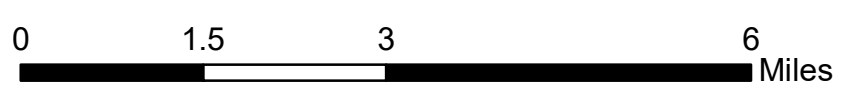


**INFRARED MAP**  
**Crescent Mtn (WA-OWF-000428)**  
**Flight: August 23, 2018 @ 2208 MDT**  
**Acres - 40,128**  
**Change in Acres from last IR - 3,165 Acres**  
**IRIN - Nate Yorgason**



### Legend

-  08/23/2018 2208 Crescent Mtn IR Heat Perimeter
-  Intense Heat
-  Scattered Heat
-  Isolated Heat



Copyright © 2013 National Geographic Society, i-cubed