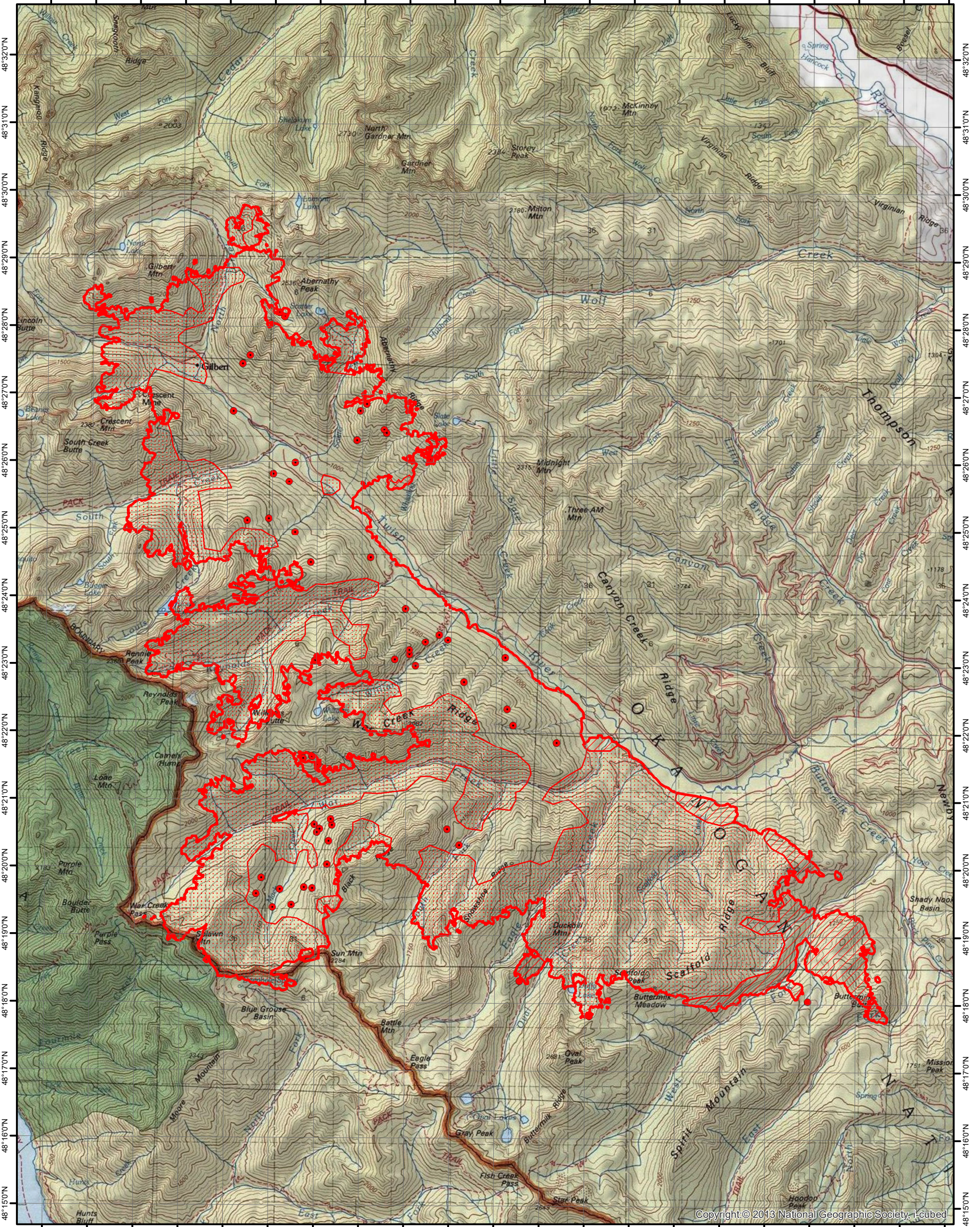
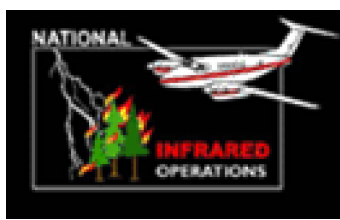


120°37'0"W 120°36'0"W 120°35'0"W 120°34'0"W 120°33'0"W 120°32'0"W 120°31'0"W 120°30'0"W 120°29'0"W 120°28'0"W 120°27'0"W 120°26'0"W 120°25'0"W 120°24'0"W 120°23'0"W 120°22'0"W 120°21'0"W 120°20'0"W 120°19'0"W 120°18'0"W 120°17'0"W





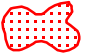

120°37'0"W 120°36'0"W 120°35'0"W 120°34'0"W 120°33'0"W 120°32'0"W 120°31'0"W 120°30'0"W 120°29'0"W 120°28'0"W 120°27'0"W 120°26'0"W 120°25'0"W 120°24'0"W 120°23'0"W 120°22'0"W 120°21'0"W 120°20'0"W 120°19'0"W 120°18'0"W 120°17'0"W



INFRARED MAP
Crescent Mtn (WA-OWF-000428)
Flight: August 25, 2018 @ 0053 MDT
Acres - 42,763
Change in Acres from last IR - 2,635 Acres
IRIN - Nate Yorgason



Legend

-  08/25/2018 0053 Crescent Mtn. IR Heat Perimeter
-  Intense Heat
-  Scattered Heat
-  Isolated Heat

