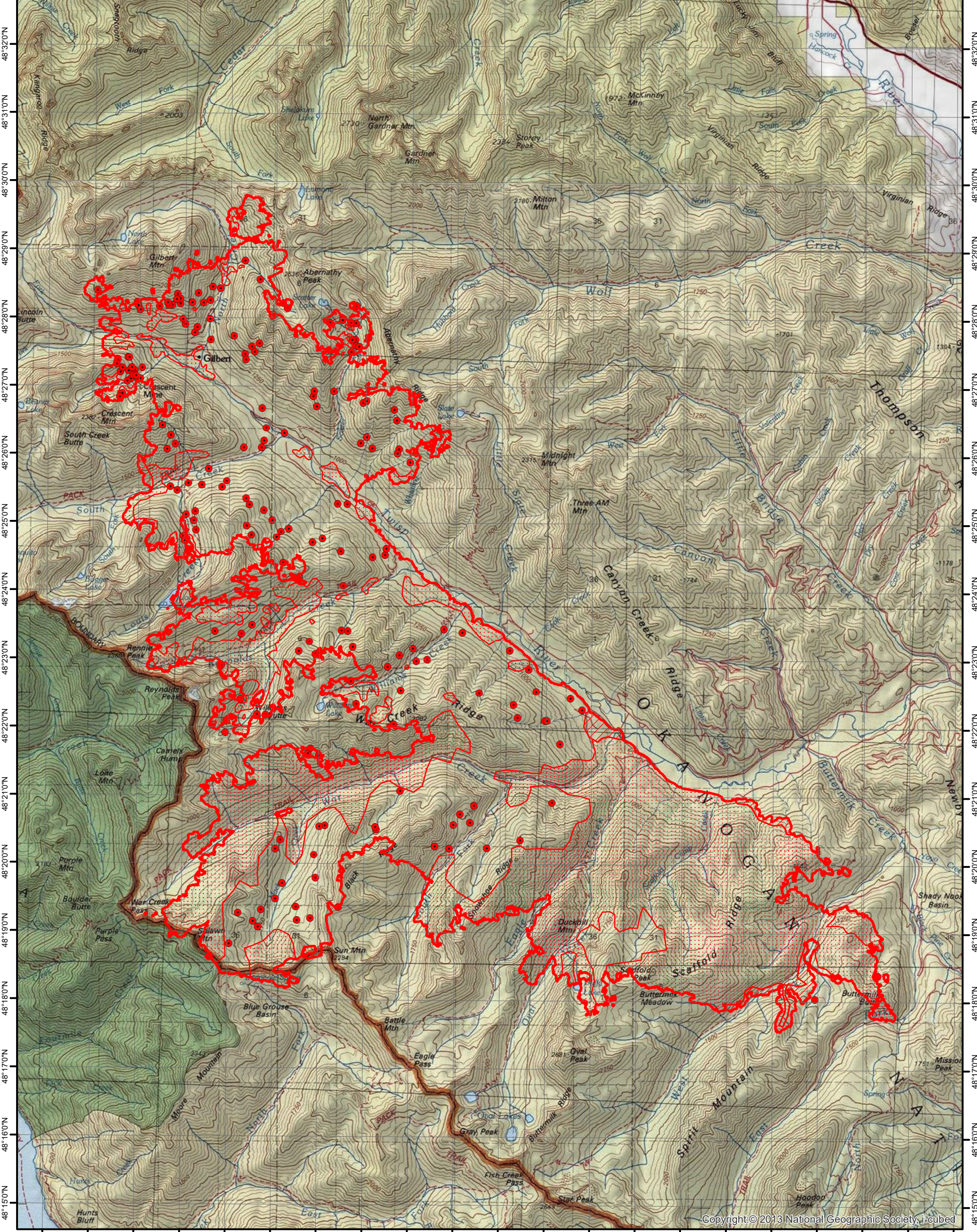



120°37'0"W 120°36'0"W 120°35'0"W 120°34'0"W 120°33'0"W 120°32'0"W 120°31'0"W 120°30'0"W 120°29'0"W 120°28'0"W 120°27'0"W 120°26'0"W 120°25'0"W 120°24'0"W 120°23'0"W 120°22'0"W 120°21'0"W 120°20'0"W 120°19'0"W 120°18'0"W 120°17'0"W




120°37'0"W 120°36'0"W 120°35'0"W 120°34'0"W 120°33'0"W 120°32'0"W 120°31'0"W 120°30'0"W 120°29'0"W 120°28'0"W 120°27'0"W 120°26'0"W 120°25'0"W 120°24'0"W 120°23'0"W 120°22'0"W 120°21'0"W 120°20'0"W 120°19'0"W 120°18'0"W 120°17'0"W



INFRARED MAP
Crescent Mtn (WA-OWF-000428)
Flight: August 28, 2018 @ 0104 MDT
Acres - 43,454
Change in Acres from last IR - 691 Acres
IRIN - Nate Yorgason



Legend

-  08/28/2018 0104 Crescent Mtn IR Heat Perimeter
-  Intense Heat
-  Scattered Heat
-  Isolated Heat

