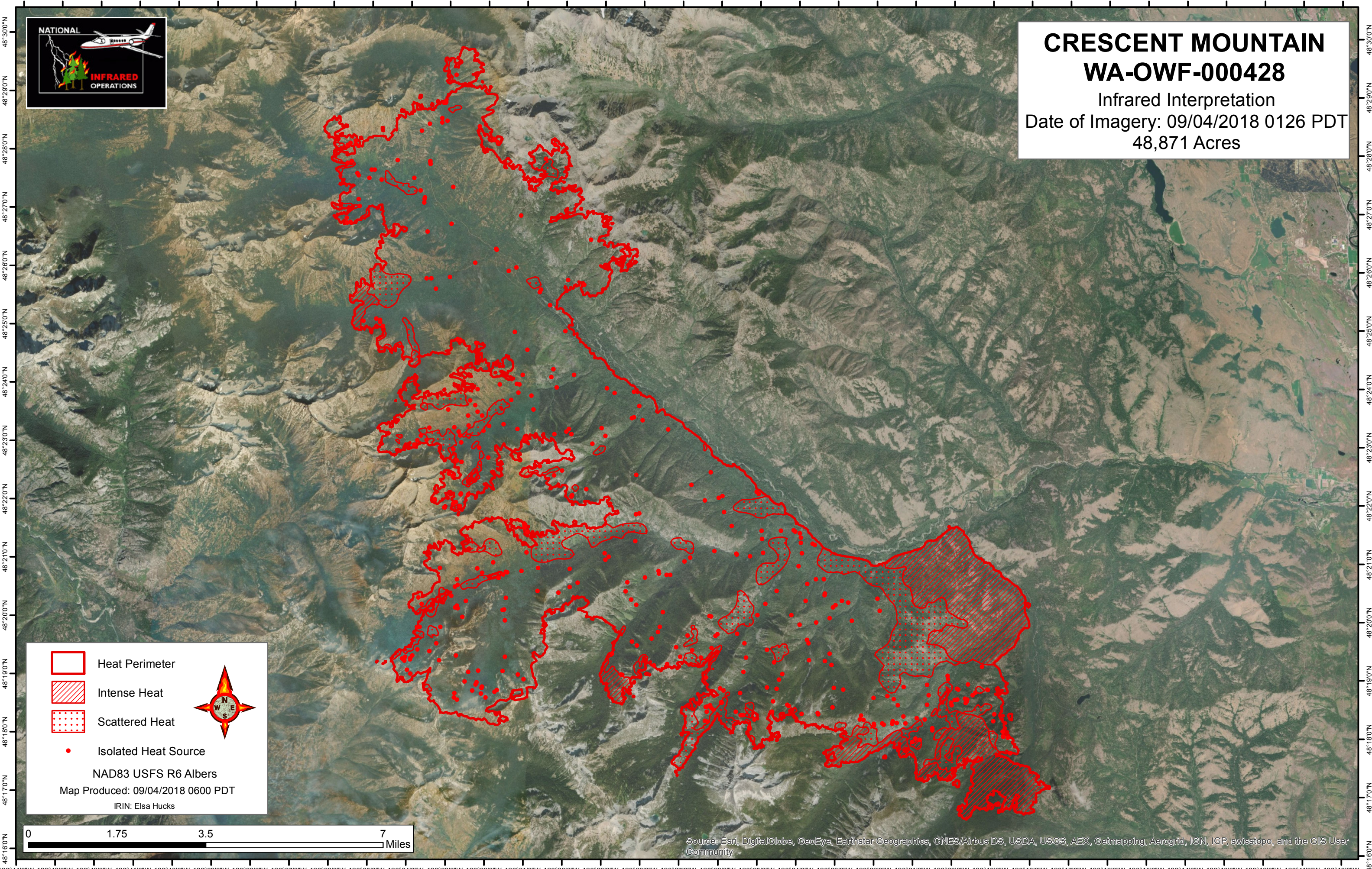







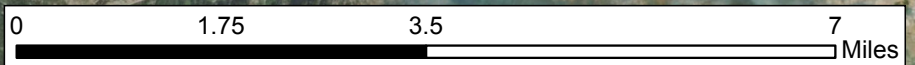
120°44'0"W 120°43'0"W 120°42'0"W 120°41'0"W 120°40'0"W 120°39'0"W 120°38'0"W 120°37'0"W 120°36'0"W 120°35'0"W 120°34'0"W 120°33'0"W 120°32'0"W 120°31'0"W 120°30'0"W 120°29'0"W 120°28'0"W 120°27'0"W 120°26'0"W 120°25'0"W 120°24'0"W 120°23'0"W 120°22'0"W 120°21'0"W 120°20'0"W 120°19'0"W 120°18'0"W 120°17'0"W 120°16'0"W 120°15'0"W 120°14'0"W 120°13'0"W 120°12'0"W 120°11'0"W 120°10'0"W



CRESCENT MOUNTAIN
WA-OWF-000428
Infrared Interpretation
Date of Imagery: 09/04/2018 0126 PDT
48,871 Acres

-  Heat Perimeter
-  Intense Heat
-  Scattered Heat
-  Isolated Heat Source

NAD83 USFS R6 Albers
Map Produced: 09/04/2018 0600 PDT
IRIN: Elsa Hucks

Source: Esri, DigitalGlobe, GeoEye, Earthstar Geographics, CNES/Airbus DS, USDA, USGS, AEX, Getmapping, Aerogrid, IGN, IGP, swisstopo, and the GIS User Community

120°44'0"W 120°43'0"W 120°42'0"W 120°41'0"W 120°40'0"W 120°39'0"W 120°38'0"W 120°37'0"W 120°36'0"W 120°35'0"W 120°34'0"W 120°33'0"W 120°32'0"W 120°31'0"W 120°30'0"W 120°29'0"W 120°28'0"W 120°27'0"W 120°26'0"W 120°25'0"W 120°24'0"W 120°23'0"W 120°22'0"W 120°21'0"W 120°20'0"W 120°19'0"W 120°18'0"W 120°17'0"W 120°16'0"W 120°15'0"W 120°14'0"W 120°13'0"W 120°12'0"W 120°11'0"W 120°10'0"W

48°30'0"N
48°29'0"N
48°28'0"N
48°27'0"N
48°26'0"N
48°25'0"N
48°24'0"N
48°23'0"N
48°22'0"N
48°21'0"N
48°20'0"N
48°19'0"N
48°18'0"N
48°17'0"N
48°16'0"N

48°30'0"N
48°29'0"N
48°28'0"N
48°27'0"N
48°26'0"N
48°25'0"N
48°24'0"N
48°23'0"N
48°22'0"N
48°21'0"N
48°20'0"N
48°19'0"N
48°18'0"N
48°17'0"N
48°16'0"N