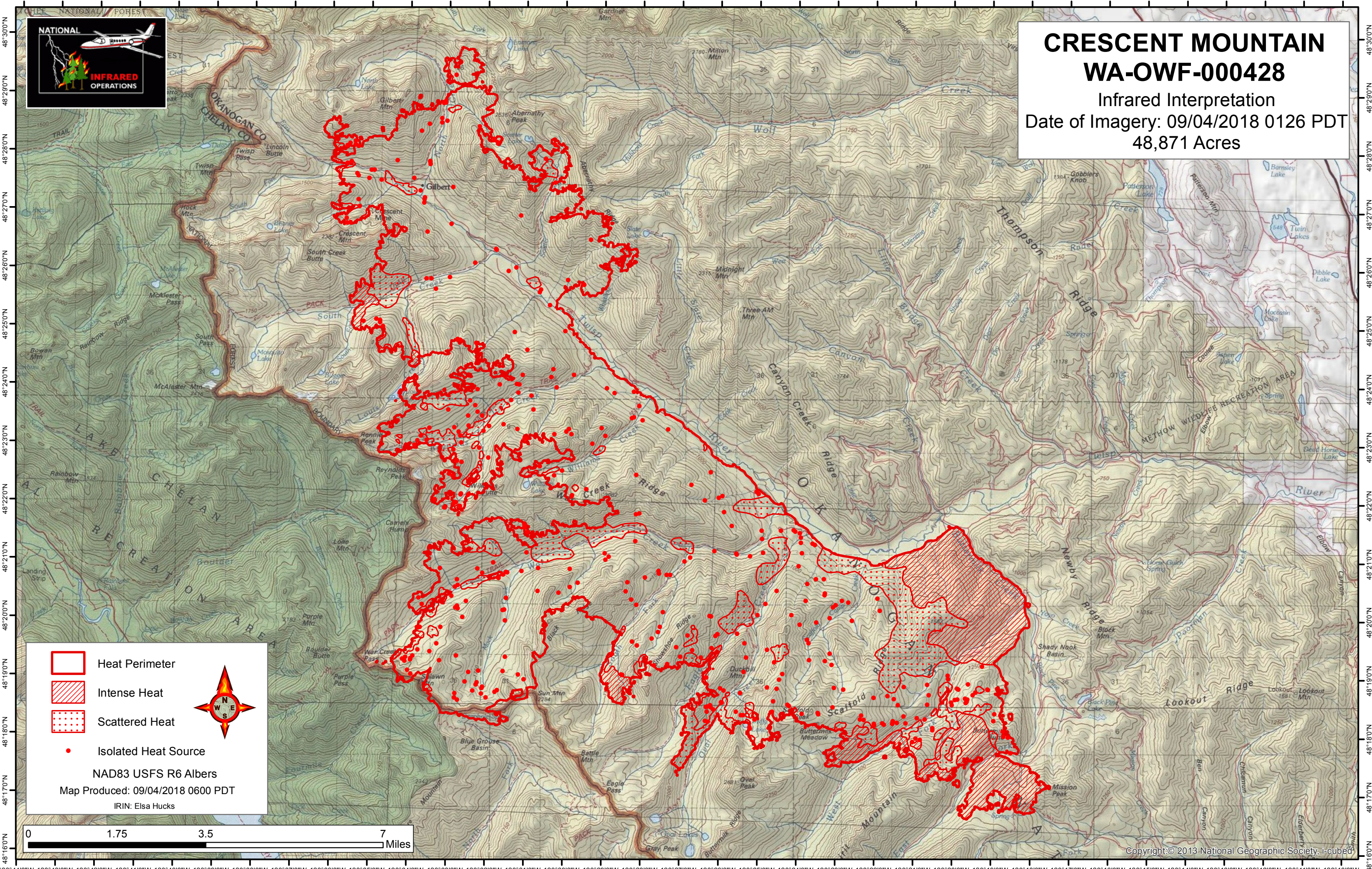






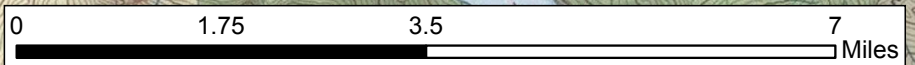
120°44'0"W 120°43'0"W 120°42'0"W 120°41'0"W 120°40'0"W 120°39'0"W 120°38'0"W 120°37'0"W 120°36'0"W 120°35'0"W 120°34'0"W 120°33'0"W 120°32'0"W 120°31'0"W 120°30'0"W 120°29'0"W 120°28'0"W 120°27'0"W 120°26'0"W 120°25'0"W 120°24'0"W 120°23'0"W 120°22'0"W 120°21'0"W 120°20'0"W 120°19'0"W 120°18'0"W 120°17'0"W 120°16'0"W 120°15'0"W 120°14'0"W 120°13'0"W 120°12'0"W 120°11'0"W 120°10'0"W



CRESCENT MOUNTAIN
WA-OWF-000428
Infrared Interpretation
Date of Imagery: 09/04/2018 0126 PDT
48,871 Acres

 Heat Perimeter
 Intense Heat
 Scattered Heat
 Isolated Heat Source

NAD83 USFS R6 Albers
Map Produced: 09/04/2018 0600 PDT
IRIN: Elsa Hucks



120°44'0"W 120°43'0"W 120°42'0"W 120°41'0"W 120°40'0"W 120°39'0"W 120°38'0"W 120°37'0"W 120°36'0"W 120°35'0"W 120°34'0"W 120°33'0"W 120°32'0"W 120°31'0"W 120°30'0"W 120°29'0"W 120°28'0"W 120°27'0"W 120°26'0"W 120°25'0"W 120°24'0"W 120°23'0"W 120°22'0"W 120°21'0"W 120°20'0"W 120°19'0"W 120°18'0"W 120°17'0"W 120°16'0"W 120°15'0"W 120°14'0"W 120°13'0"W 120°12'0"W 120°11'0"W 120°10'0"W