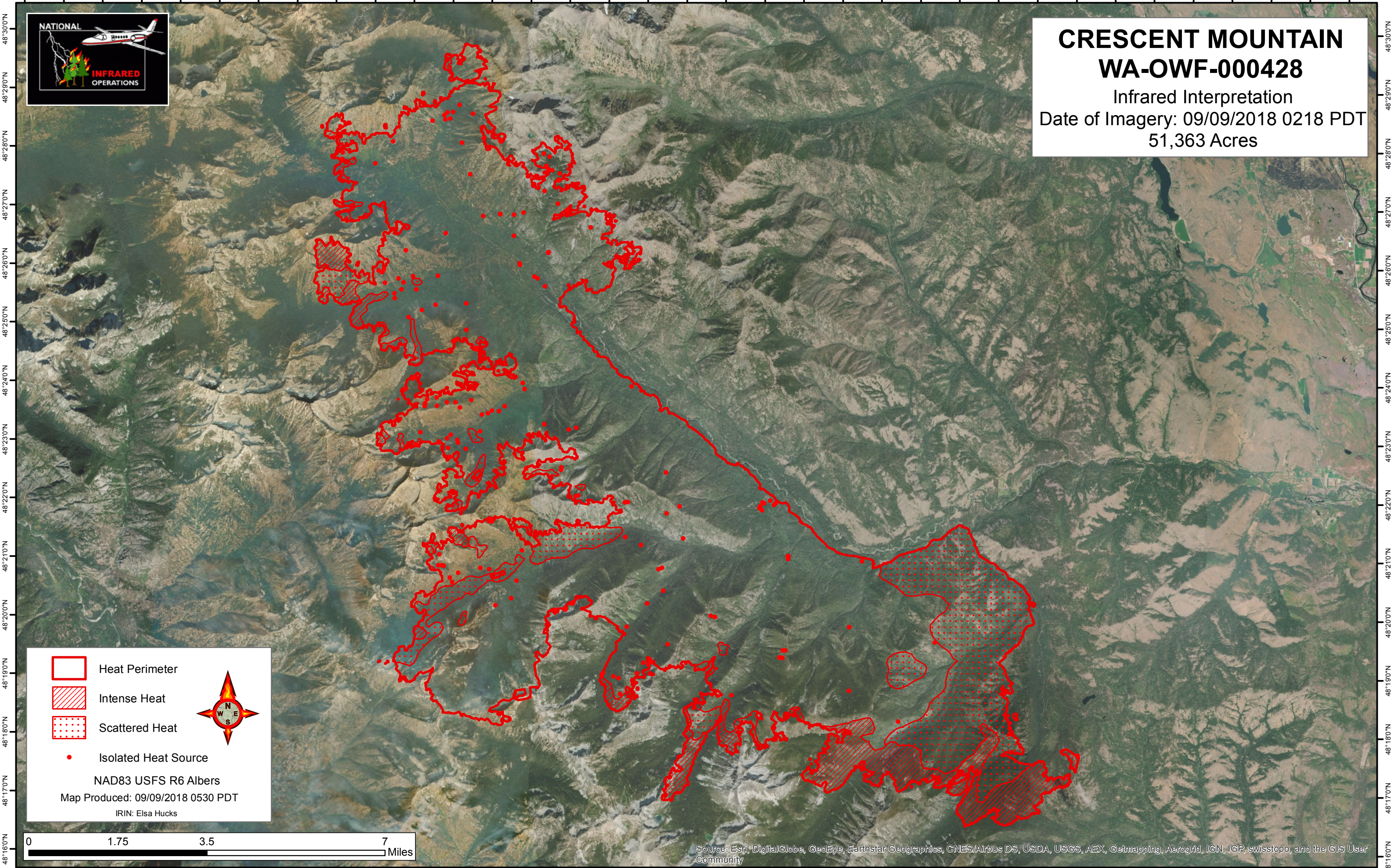






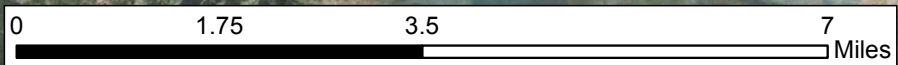
120°44'0"W 120°42'0"W 120°40'0"W 120°38'0"W 120°36'0"W 120°34'0"W 120°32'0"W 120°30'0"W 120°28'0"W 120°26'0"W 120°24'0"W 120°22'0"W 120°20'0"W 120°18'0"W 120°16'0"W 120°14'0"W 120°12'0"W 120°11'0"W 120°10'0"W



**CRESCENT MOUNTAIN**  
**WA-OWF-000428**  
Infrared Interpretation  
Date of Imagery: 09/09/2018 0218 PDT  
51,363 Acres

-  Heat Perimeter
-  Intense Heat
-  Scattered Heat
-  Isolated Heat Source

NAD83 USFS R6 Albers  
Map Produced: 09/09/2018 0530 PDT  
IRIN: Elsa Hucks



Source: Esri, DigitalGlobe, GeoEye, Earthstar Geographics, CNES/Airbus DS, USDA, USGS, AEX, Getmapping, Aerogrid, IGN, IGP, swisstopo, and the GIS User Community

120°44'0"W 120°42'0"W 120°40'0"W 120°38'0"W 120°36'0"W 120°34'0"W 120°32'0"W 120°30'0"W 120°28'0"W 120°26'0"W 120°24'0"W 120°22'0"W 120°20'0"W 120°18'0"W 120°16'0"W 120°14'0"W 120°12'0"W 120°11'0"W 120°10'0"W