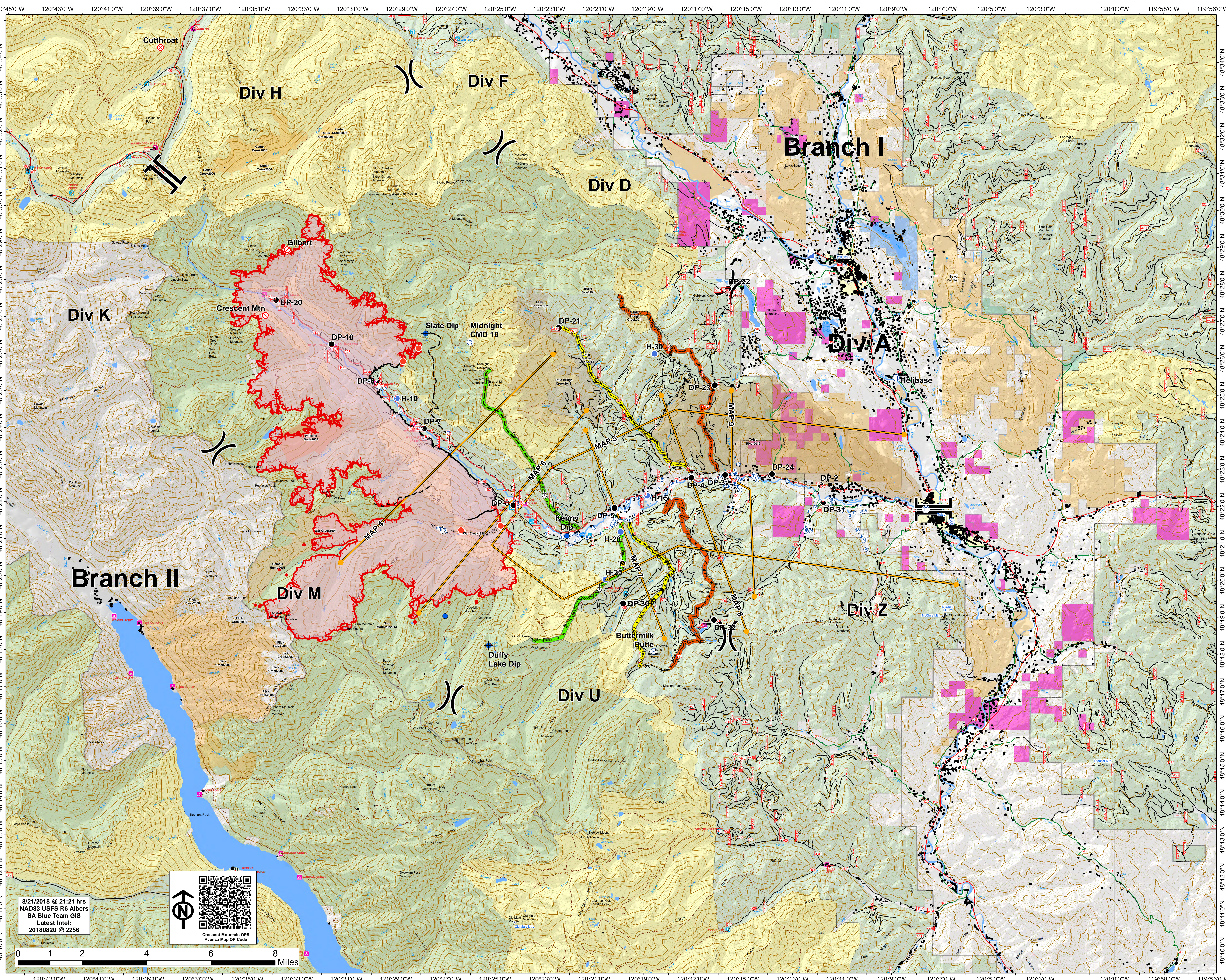


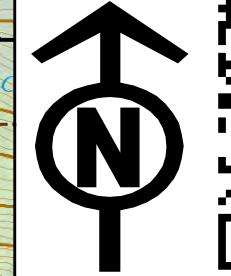


Operations
Map
Approx Acreage:
31,091

- Wildfire Daily Fire Perimeter
- Structure
- Wilderness
- Ranger District
- Roadless Conservation
- Diamond Creek Fire
- Camp
- Dip Site
- Drop Point
- Fire Origin
- Fire Station
- Gas
- Helibase
- Hot Spot
- Hot Spot
- Incident Command Post
- Lookout
- Pump
- Repeater/Mail Pit
- Safety Zone
- Slip Site
- Staging Area
- Water Source
- Value at Risk
- Division Break
- Branch Break
- Uncontrolled Fire Edge
- Completed Line
- Completed Dashed Line
- H - H Completed Hand Line
- R - R Road as Completed Line
- Access or Improved Road
- Proposed Dashed Line
- Planned Fire Line
- Management Action Point
- Trip River Road
- Highway
- County Road
- USFS Road
- Trail
- Contingency
- primary
- alternate
- contingency
- Fire History
- 1982 - 1999
- 2004
- 2006
- 2008
- 2013
- 2014
- 2015
- 2016
- OWNER
- BLM
- FS
- MSF
- NPS
- PUD
- PIV
- USFWS
- W
- City or Municipality
- WV State or Park
- WA State Parks
- Washington Dept



8/21/2018 @ 21:21 hrs
NAD83 USFS R6 Albers
SA Blue Team GIS
Latest Intel:
20180820 @ 2256



0 1 2 4 6 8 Miles