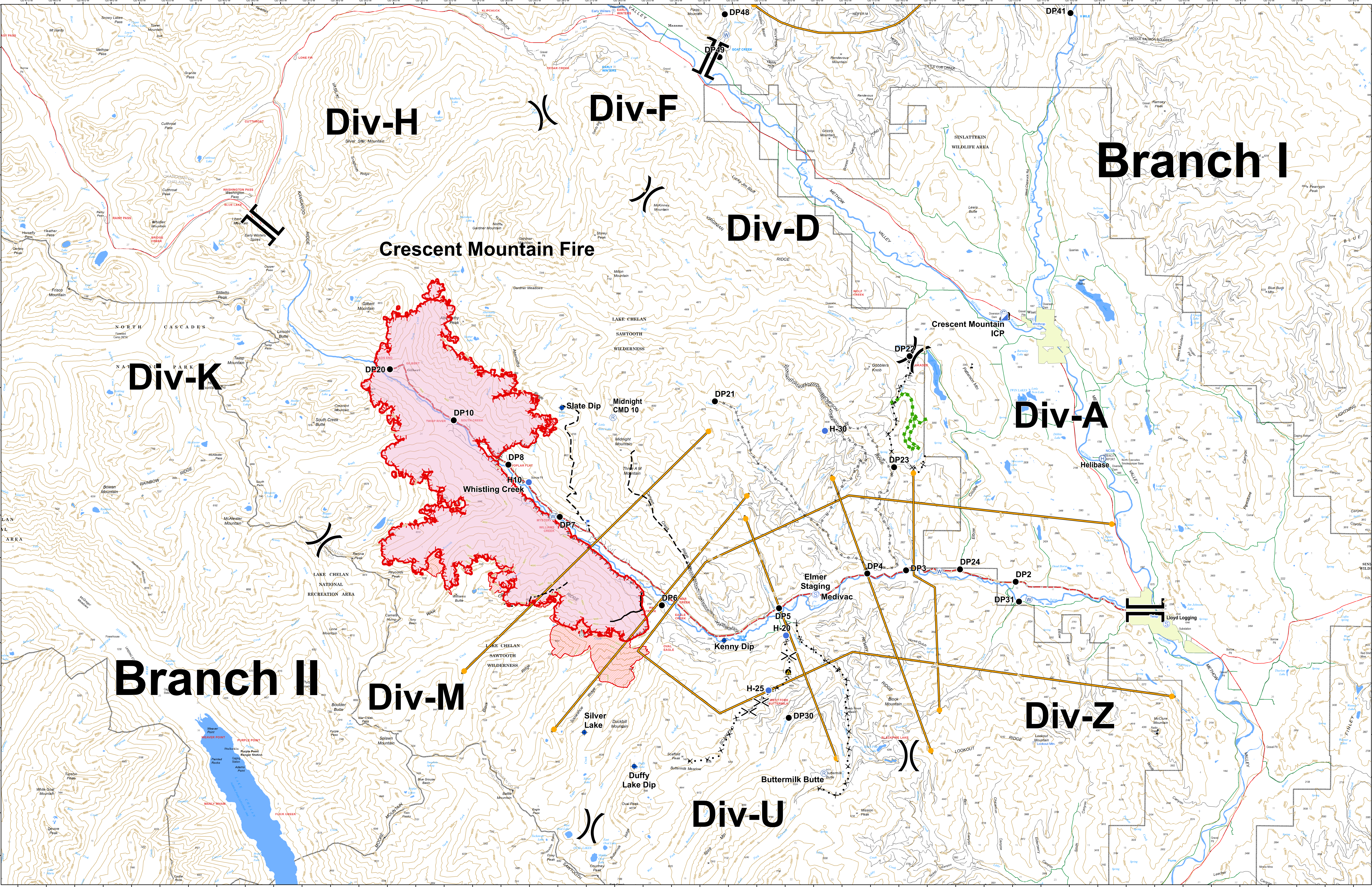




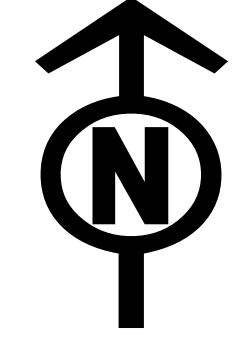
Briefing Map

Crescent Mountain Fire WA-OWF-000428

08/17/2018



- | | | | | | | |
|-------------------------------|--------------|--------------|-----------------------------|------------------------|-------------------------|------------------|
| Wildfire Daily Fire Perimeter | Camp | Lookout | Value at Risk Segment Break | Uncontrolled Fire Edge | Proposed Dozer Line | Twisp River Road |
| DRTI Heat Detection Polygons | Dip Site | Repeater | Division Break | Completed Line | Planned Fire Line | Highway |
| Towns | Drop Point | Safety Zone | Branch Break | Completed Dozer Line | Escape Route | County Road |
| Ranger District | Helibase | Sling Site | Division Break | Completed Hand Line | Management Action Point | City Road |
| | Staging Area | Water Source | | Road as Completed Line | Other | USFS road |



08/17/2018 @ 1447
NAD 83 USFS R6 Albers (Meters)
SA Red Team GIS
Latest Intel: 20180817 @ 1100